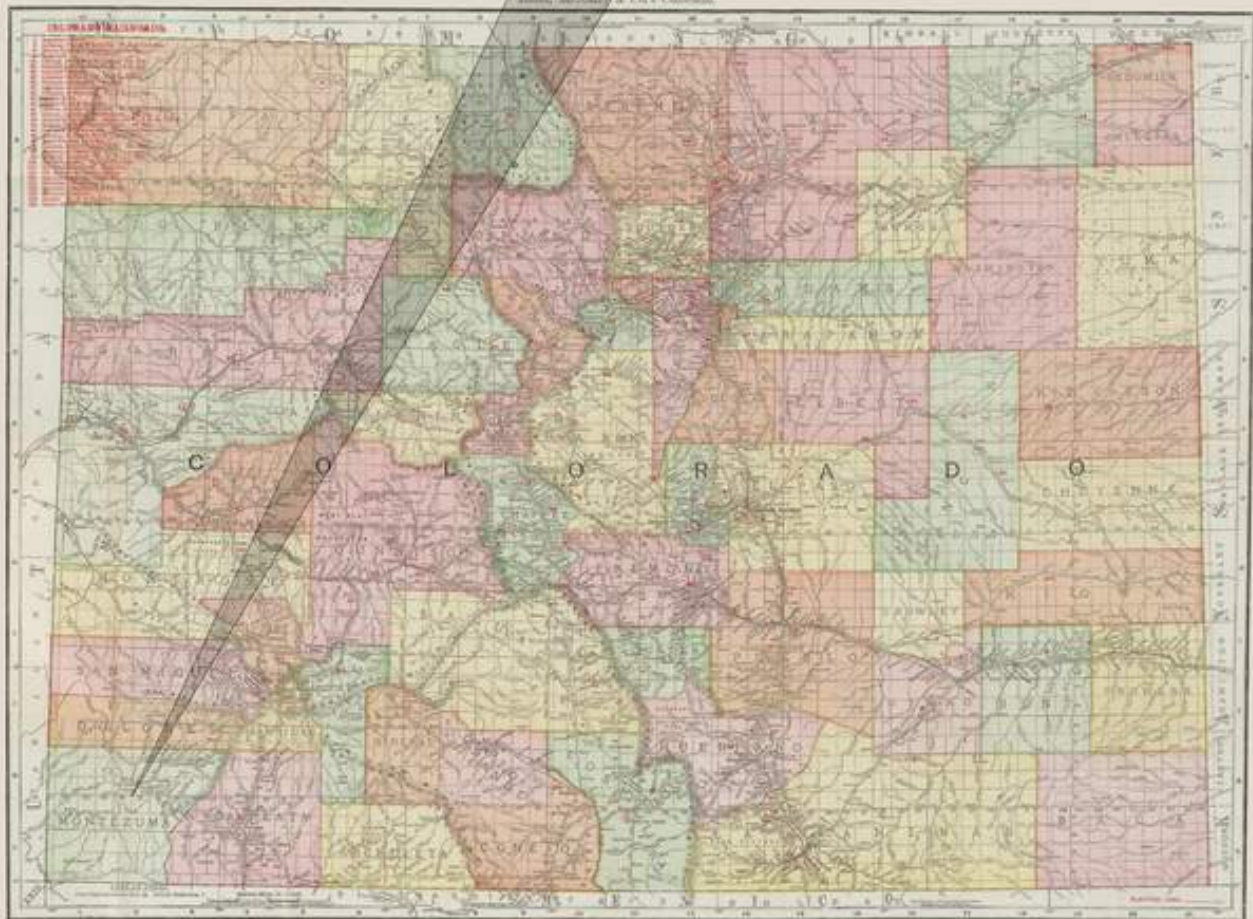


Montezuma County



Map courtesy of <http://www.davidrumsey.com>

Established: April 16, 1889

County Seat: Cortez



MONTEZUMA COUNTY

By William H. Bauer

Montezuma County occupies the southwestern corner of the State of Colorado - A portion of the "Four Corners Country" where the states of Colorado, New Mexico, Arizona and Utah meet at a common point. Along its northern and longest border the county is approximately 60 miles wide. The southern boundary is only some 39 miles in length. In north-south direction, the distance is near constant 44 miles. At the northwest corner, a triangular wedge, that was once a part of Montezuma County, is now included in Dolores County. This change was made because of the deep gorge of Cross Canyon, which made it extremely difficult to access that triangle from the south. Montezuma County is bordered on the north by Dolores County, on the east by La Plata County, on the south by New Mexico and on the west by Utah.

When Colorado Territory was created in 1861, what is now Montezuma County was a portion of Lake and Conejos Counties. On February 10, 1874 it was included in the newly formed La Plata County, and on April 16, 1889 was sub-divided from La Plata County. Cortez became the county seat of the new county, in spite of the fact that at the time Mancos was a more developed community. Subsequent attempts to change the county seat have all failed and gradually Cortez has become the principal commercial center of the county. Mancos and Dolores are the other commercial centers within Montezuma County.

The topography is mostly mesa and tablelands deeply dissected by the principal streams. The eastern boundary includes a portion of the La Plata Mountains, a sub-range of the San Juan Mountains, with some peaks exceeding 13,000 feet in height.

The major river in the county is the Dolores River. This stream enters the county near the northeast corner, loops southward and westward before turning to the northwest and exiting from Montezuma County back into Dolores County. The Mancos River rises in the La Plata Mountains, flows to the south and westward around the Mesa Verde Complex, and leaves the county a few miles east of the Four Corners headed for a junction with the San Juan River in Northern New Mexico. From the vicinity of Cortez, a number of seasonal streams combine to form McElmo Creek which flows nearly due west, through McElmo Canyon, into Utah. With the exception of these major streams, nearly all other streams are seasonal in nature but can become deadly with a sudden, heavy, summer storm.

There was some mining in Montezuma County but it was never a significant economic factor and the "towns" that were established to serve the few mines were short-lived at best. Stone quarries played a small part in the late nineteenth century and early twentieth century economy. Lumber was a major factor in the economy of Montezuma. Most of the lumbering activity was in the northeastern quarter of the county north and east of highways US 160 and US 666 (SRM: renumbered US 491). Lumbering still continues but is much reduced from its earlier levels when there were large sawmills at places such as Dolores, Gradens and McPhee.

Agriculture has been and is still, a significant contributor to the county's economy. Cattle and sheep are raised throughout the county and in the northwestern portion agriculture, principally the growing of pinto beans, is important. However, agriculture depends heavily on irrigation for any chance of success.

Recreational activities are another major contributor to the economy of Montezuma County. Mesa Verde National Park is an important attraction that brings tourists from throughout the world and Cortez and Mancos derive considerable benefit from the tourist trade. To the north, Dolores caters to the outdoor activities in the mountains, and to hunting and fishing along the Dolores River and its tributaries. There are many guest ranches scattered throughout the area.

Large portions of the county are off limits to commercial development. Nearly the entire southern half of the county is included in the Ute Mountain Indian Reservation, headquartered at Towaoc. Mesa Verde National Park excludes another large parcel from development. Much of the timberlands of the northeast corner are now a part of the San Juan National Forest with strictly controlled exploitation and development.

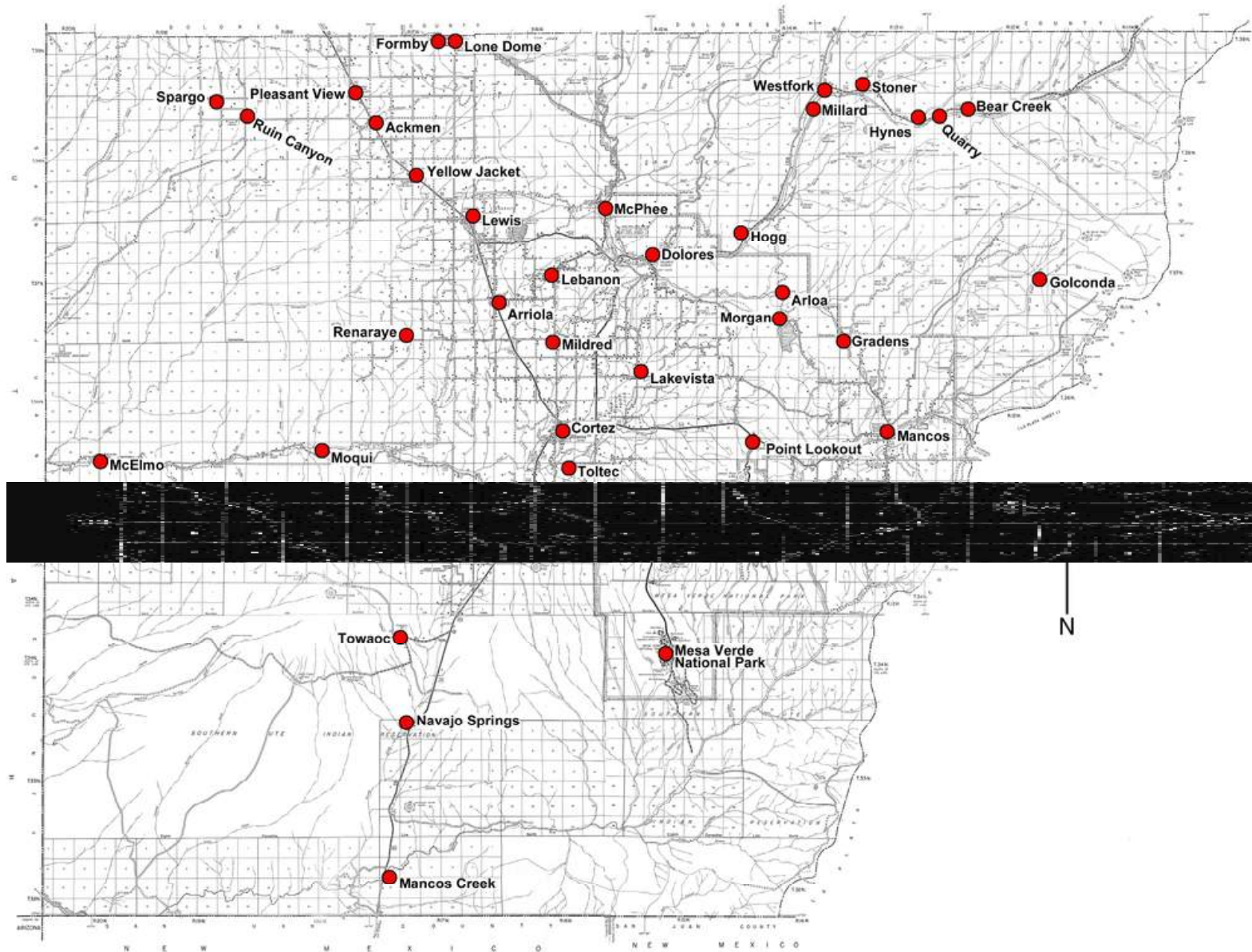
Present day access to the county is not difficult. US Highway 160 from Durango crosses the eastern boundary through Mancos to Cortez, turns south with US 491 and then southwest leaving the county and the state a short distance from the Four Corners, on its way to Flagstaff Arizona. US 491, from Gallup, New Mexico, passes north through Cortez and continues northwest into Dolores County on the way to Dove Creek and to Utah. A good county road from Cortez follows McElmo Creek west into Utah. From the northeast, State Highway 145 descends the Dolores River from Telluride and Rico to Dolores, then south to Cortez.

Today there are no railroads within Montezuma County. The Rio Grande Southern Railroad did pass through Montezuma County. Like Colorado 145, it followed the river to Dolores, then turned eastward up Lost Canyon on its way to Durango. From this railroad there were numerous short line railroads that operated to the lumber mills in the mountains and on the mesas. In many places vestiges of the old railroad grades can still be seen and one of the Rio Grande Southern's famous "Galloping Geese" is on display in Dolores. It is still operational and is often transported to other locations for promotional operation.

The climate of Montezuma County is mild for most of the year. It can have cold winter days and scorching hot summer days. But generally it is a pleasant climate, which is beginning to attract retirees to the area. It is an arid, near desert land and the presence, or absence, of a reliable source of water determines the use of the land and any future development.



**Point Lookout, Lone Cone and the Knife Edge near the entrance to Mesa Verde National Park
Photograph by E. Hendrickson
May 30, 2022**



Post Office Location Map – Montezuma County

ACKMEN

Ackmen was established in 1913, the second of the towns resulting from the homesteading of western Montezuma County for dry-land farming. The town was more a collection of scattered homesteads but it did support two or three small businesses, a post office and even a weekly newspaper.

In 1936 US Highway 491 was re-aligned and by-passed Ackmen, leaving Ackmen a mile from the highway. A new townsite was laid out and named Pleasant View. Soon, the businesses and the post office moved to Pleasant View.

There are two sites specified in the Geographic Site Location Reports. From Pleasant View drive south about one mile on US 491 to an unmarked road to the east. The site of Ackmen was located in the southeast corner of this intersection. There are some buildings at the intersection but their age is uncertain.

To reach the second location, go one-half mile west from the above mentioned intersection, then turn south on County Road 15.5 to County Road AA. Ackmen was in the northeast quarter of this intersection. There is a clump of trees a couple hundred yards from the intersection and in the brush we found a row of well-weathered stone that could have been a foundation.

There are two versions for the derivation of the name. One version claims that the name was constructed by taking one letter from each of six suggested names. The second, more reasonable version claims that the name was that of an early settler.

The area that once was Ackmen continues to be agricultural with both farming and ranching the principal activities of the residents.

Chronology of the Post Office

May 26 1917	---	SE/4 NW/4 Sec 7 T38N R17W	Originally proposed as Sandstone 1/4 mile from the main creek, and between the forks Applicant for postmaster - James Winthrop Hadley	
Nov 5 1917		Established		
Nov 5 1917		Hadley, James W.		
Nov 20 1910		Beaber, Harlan H.		
Mar 21 1922		Eitel, Carrie A.		
Jan 13 1923		Garwood, Laura	Acting	
May 18 1923		Garwood, Laura	Appointed	
May 20 1925		Proffer, Jessie		
Sep 23 1925		Weinmann, Clara	Confirmed	
Jun 7 1938	---	S/2 N/4 Sec 8 T38N R17W	1/2 mile south of Sandstone Creek The sketch map would place it on the west side of the highway, in the NW/4 of the SW/4 Sec 8. The map indicates a move from the western portion of Section 7, and north of Sandstone Creek. The move was in order "to be on new paved highway #160."	
Nov 24 1938		Lancaster, Mrs. Alice	Assumed charge	
Dec 3 1938		Lancaster, Mrs. Alice	Acting	
Dec 30 1938		Failing, Mrs. Charlene	Confirmed	
Jan 12 1939		Failing, Mrs. Charlene	Commissioned	
Jan 25 1939		Failing, Mrs. Charlene	Assumed charge	
Feb 22 1940		Axtell, Mrs. Eva E.	Assumed charge	
Mar 8 1940		Axtell, Mrs. Eva E.	Acting	
Apr 18 1940	---	NW/4 Sec 8 T38N R17W	Moved to this site January 24, 1939 Shown on east side of highway	
Sep 21 1940		Weinmann, Clara	Confirmed	
Oct 16 1940		Weinmann, Clara	Commissioned	
Oct 23 1940		Weinmann, Clara	Assumed charge	
May 17 1941		Ordered closed		
May 31 1941		Discontinued	Mail to Pleasant View	

ACKMEN – Continued

Confirmed types of postal markings

1	ACKMEN, / COLO. CI 10P 33.0	4bars S-24x19mm	May 16 1934 Dec 15 1934
2	ACKMEN / COLO. CI 10P 32.0	4bars S-22x18mm	May 19 1932 May 31 1941
3	ACKMEN, COLO. / M.O.B. CI 11P 28.0/18.0	Hstp No killer, backstamp on card	May 31 1941



ARLOA

Arloa began life when the new owners of the Montezuma Lumber Company moved their mill from Gradens to a site that they initially named Glencoe. The Post Office Department rejected the name, apparently because at the time there was a Glencoe in California. There is no recorded explanation for the name Arloa.

The site of Arloa was on the Rio Grande Railroad in Lost Canyon between Dolores and Mancos. It was chosen to give access to abundant stands of timber on Haycamp Mesa, north of Lost Canyon. A spur line was built from Arloa to bring timber to the mill. The principal products of the mill were flooring, siding, molding, mine timbers and boxes. When the single resource that the town depended upon began to run out, Arloa started to decline and it was last listed in the 1914 Colorado Business Directory.

To reach the site of Arloa from Mancos, drive north on Colorado Highway 184 ten miles to Montezuma County Road 36.1. Turn north and stay on it for about one-half mile until you encounter a locked gate across the road. At least there was a gate there in 1994 and again in 2000 when I tried to get to Arloa. From the gate, the road goes down into Lost Canyon and where it crosses the abandoned Rio Grande Southern Railroad grade is the site of Arloa. It is reported that nothing remains, although possibly the remnants of the railroad water tank may still exist.

The site of Arloa is on private property. Perhaps some day in the future the area will undergo subdivision and development and there will once again be access to Arloa.

Chronology of the Post Office

Dec 19 1902	---- SW/4 Sec 22 T37N R14W 4 miles south of the Dolores River 25 yards south of Lost Canon Creek On the Rio Grande and Southern Railroad GLENCOE was crossed out and Arloa written in Proposed postmaster - John R. Millspough
Mar 12 1903	Established
Mar 12 1903	Millspaugh, John R. [SRM: Signature on PO application appears to be Millspough]
Dec 10 1904	Wagner, Henry
Aug 13 1906	Endner, William H.
Dec 27 1907	Greene, Barnett F.
Apr 15 1914	Discontinued Mail to Dolores

ARLOA – Continued**Confirmed types of postal markings**

1	ARLOA / COLO. CI 10P 28.0	Hstp Cork, target	Jan 14 1904 Apr 9 1909
2	ARLOA, / COLO. CI 10P 31.0	4bars S-23x14mm	Jun 19 1909 Nov 25 1913

**ARRIOLA**

Settlement began in the vicinity of Arriola as early as 1885, however it was not until 1894 that a post office was acquired and named Arriola. The area is rich farming land, when irrigated, and farming remains the principal activity of the area. The growth of Cortez and improvements in transportation, reduced the need for Arriola as a supply center and the post office was closed in 1933.

As with Ackmen, there are two versions for the name Arriola. The commonly accepted origin is that it was suggested by a schoolteacher and was the name of a Spanish General but no other details are known. The other, more fanciful origin is that a farmer, N. C. Bonivee, suggested the name because, "The sun seemed to shine more brightly on this particular spot than elsewhere in the valley." I am uncertain as to how that would translate into Arriola.

The remnants of the community of Arriola are about six miles northwest of Cortez on US Highway 491. About two-tenths of a mile east of US 491 and just before the San Juan Bean Growers and Farmers Cooperative High Country elevator, and across the street from the Lewis-Arriola Fire Department, is a building, the east half or portion which appears to have served some purpose other than a residence. Perhaps this was the Arriola Post Office.

Another site (1908) is one mile due south of the US 491 location on County Road 21, however nothing at that location can be identified with the proper time period.

Latitude = 37:26:33 North Longitude = 108:38:44 West

Chronology of the Post Office

Jul 26 1894	---	SE/4 SE/4 Sec 30 T37N R16W One mile west of Alkali Creek Proposed postmaster – Mrs. Ella B. Miller
Dec 18 1894		Established
Dec 18 1894		Miller, Ella B.
Mar 15 1899		Curry, Elnora S. M.
Mar 26 1900		Miller, Francis B.
May 23 1900		Ordered closed
Jun 15 1904		Discontinued Mail to Dolores
May 25 1908	----	NW/4 Sec 29 T37N R16W 100 feet east of an irrigation canal
Jun 20 1908		Re-established
Jun 20 1908		McMurphy, Charles C.
Aug 9 1909		Morgan, Jane A.
Apr 24 1914	----	NW/4 NW/4 Sec 29 T37N R16W
Aug 8 1916		Rogers, Florence H.

**THE COLORADO POSTAL ENCYCLOPEDIA
MONTEZUMA COUNTY**

ARRIOLA – Continued

Apr 16 1926	Rogers, Harry R.	Acting
May 14 1926	Rogers, Harry R.	Appointed
Apr 1 1933	Ordered closed Effective date Apr 29 1933	Mail to Dolores
Apr 29 1933	Order rescinded	
Jul 31 1933	Ordered closed	
Aug 15 1933	Discontinued	Mail to Dolores

Confirmed types of postal markings

1	ARRIOLA / COLO. CI 10P 27.0	Hstp Not present	Nov 27 1897
2	ARRIOLA. / COLO. CI 10P 31.0	4bars S-??x14mm	Feb 5 1913 Jun 7 1921
3	ARRIOLA. / COLO. CI 10P 32.0	4bars S-24x19mm	Aug 15 1933



BEARCREEK

Bearcreek was the easternmost siding or passing track in Montezuma County on the Rio Grande Southern Railroad. There was a stockyard which indicates that cattle raising was the principal activity in the area. There was some mining on Bear Creek, to the south, but the ore bodies were small and production, if any, was minimal.

Although the Geographic Site Location Report specifies a location, it is difficult to plot, as the Federal Land Grid has not been firmly established in this area. My best approximation is that it was on Colorado Highway 145, a mile and a half further east from the site of Quarry. This would be a little more than two miles east of the Taylor Creek Road (see Hynes).

At this location, there are some occupied buildings that are labeled Bear Creek. Jim Ozment is of the opinion that these buildings are of the style used by the Rio Grande Southern Railroad, however, they have likely been moved to their present location.

Chronology of the Post Office

Jan 30 1899	---	SE/4 Sec 6 T38N R12W On the north sides of the Dolores River and Bear Creek 75 yards north of the Rio Grande Southern RR Proposed postmaster - Frank Robinson
Mar 11 1899		Established
Mar 11 1899		Robinson, Frank
Mar 7 1900		Ordered closed
Mar 31 1900		Discontinued Papers to Quarry
Dec 12 1906	----	SE/4 Sec 6 T38N R12W Dolores River 200 feet south Bear Creek one mile southeast of post office site Rio Grande Southern RR, 50 feet south
Apr 13 1907		Re-established
Apr 13 1907		Verden, Charles W.
Nov 24 1915		Verden, Josephine B.
Dec 14 1918		Discontinued Mail to Rico

BEARCREEK – Continued**Confirmed types of postal markings**

1 BEARCREEK, / COLO.
CI 10P 31.0

Nov 19 1907 May -- 1912

4bars S-24x13mm

**CORTEZ**

Cortez was founded in 1886 on land owned by James W. Hanna, who sold his property to the Montezuma Land & Development Company. Hanna also suggested the name, that of the Spanish conquistador who conquered Mexico in the sixteenth century and defeated the county's namesake, Montezuma, leader of the Aztecs.

Water was critical to the initial success of Cortez and its early business focused on building canals to bring water to the area. For a few years water was in short supply, much of it having to be hauled in from nearby Mitchell Springs. On July 4, 1890 the canal system was completed into Cortez and the problem was alleviated. However, as Cortez continues to grow and prosper, water remains a critical element to success in this arid country.

Before the founding of Cortez, there was a small, established community about two miles to the south by the name of Toltec. The demise of Toltec likely began when Bernard J. Byrne, the postmaster at Toltec moved to the new community and became the first postmaster of Cortez. The post office at Toltec would not survive to the end of 1887.

Montezuma County was carved from La Plata County in 1889 and Cortez was named the county seat, a position it has held ever since. The selection of Cortez was not without controversy, as at the time Mancos was a larger and more established community.

Since its founding, Cortez has become the primary city of Montezuma County serving as the major supply center for farms and ranches. Cortez is also a gateway to the Ute Mountain Indian Reservation, to Mesa Verde National Park and to other Anasazi historical sites in southwestern Colorado.

Cortez is at the junction of US Highway 160 from Durango to Shiprock, New Mexico and US Highway 491 northwest to Utah. Colorado Highway 145 to Telluride also begins at Cortez.

There is some question about the spelling of the first postmaster's name. Postal records for Toltec and Cortez list it as "Byrne" but some historical reports spell it "Byrns."

Latitude = 37:20:56 North Longitude = 108:35:07 West

Chronology of the Post Office

<p>Jun 4 1887</p> <p>Jun 21 1887</p> <p>Jun 21 1887</p> <p>May 14 1889</p> <p>Oct 15 1892</p> <p>Nov 28 1893</p>	<p>----</p> <p>Established</p> <p>Byrne, Bernard J.</p> <p>Cooper, Edgar H.</p> <p>Lambe, Edwin R.</p> <p>Scharnhart, Charles J.</p>	<p>N/2 SW/4 Sec 26 T36N R16W The sketch map shows "Toltec P.O." in the NW/4 NE/4 Sec 2 T35N R16W, and seems to indicate a move of the post office from there to the Cortez location.</p> <p>Proposed postmaster - Bernard James Byrne</p> <p>Not commissioned</p>
--	--	---

CORTEZ – Continued

Oct 30 1897	Hambleton, Ezra	
Feb 10 1899	Edmonson, Alonzo P.	
Jan 17 1900	Taylor, Davis H.	
Apr 20 1909	Taylor, Davis H.	
Mar 1 1912	Goodykoontz, Floyd M.	P&S [Apptd. by President & confirmed by Senate]
Apr 29 1914 ---	NW/4 Sec 26 T36N R16W	
Mar 29 1916	Johnson, Minnie	P&S
Dec 15 1921	Pollard, Charles H.	P&S
Feb 23 1926	Crawford, Rachel	
Mar 8 1930	Crawford, Rachel	
Jun 16 1934	Harrison, William H.	Nominated
Jun 18 1934	Harrison, William H.	Confirmed
Aug 7 1934	Harrison, William H.	Commissioned
Aug 3 1939	Bradfield, Floyd C.	Nominated
Aug 5 1939	Bradfield, Floyd C.	Confirmed
Aug 9 1939	Bradfield, Floyd C.	Appointed Presidential
Sep 1 1939	Bradfield, Floyd C.	Commissioned
Oct 6 1939	Bradfield, Floyd C.	Assumed charge
Oct 21 1941 ---	NW/4 Sec 26 T36N R16W US 160 passes in front of post office	
Nov 16 1956	Quackenbush, Marshall L.	Assumed charge
Nov 29 1956	Quackenbush, Marshall L.	Acting
Mar 28 1957	Winegar, Walter W.	Assumed charge
Apr 3 1957	Winegar, Walter W.	Acting
Apr 2 1958	Winegar, Walter W.	Nominated
Jul 16 1958	Winegar, Walter W.	Confirmed, Appt'd Presid. & Commissioned
Aug 22 1958	Winegar, Walter W.	Assumed charge
Dec 31 1959	Leicht, Robert G.	Assumed charge
Jan 4 1960	Leicht, Robert G.	Acting
Apr 4 1960	Amrine, Wesley H.	Assumed charge
Apr 7 1960	Amrine, Wesley H.	Acting
Apr 11 1962	Bradfield, Floyd C.	Nominated
Aug 31 1962	Bradfield, Floyd C.	Confirmed
Sep 4 1962	Bradfield, Floyd C.	Appointed Presidential
Sep 14 1962	Bradfield, Floyd C.	Commissioned
Sep 28 1962	Bradfield, Floyd C.	Assumed charge
Feb 28 1968	Mason, William Francis	Acting
Mar 20 1971	Mason, William Francis	Appointed
Aug 22 1973	Gardner, Robert L.	Officer in charge
Apr 8 1974	Dunn, Kenneth	Officer in charge
Apr 27 1974	Alire, Henry J.	Appointed
Apr 7 1979	Padilla, Frank	Officer in charge
Oct 5 1979	Story, Orville	Officer in charge
Jan 26 1980	Ortis, Lorenzo	Appointed

Confirmed types of postal markings

0.1	CORTEZ / COLO. CI 10P 28.0	Hstp Target, 4-ring	Nov 29 1887 Year date from docketing on reverse
1	CORTEZ, / COLORADO CI 10P 27.0	Hstp Target, heavy 2-ring	Jan 2- 1890 Nov 20 1890
1.1	CORTEZ / COLORADO. CI 21P 32.0/29.0/21.0	Hstp No killer	Aug 1 1892
2	CORTEZ, / COLORADO CI 10P 29.0	Hstp Not present	Feb 15 1893 Mar 7 1894
3	CORTEZ, COLO. // REGISTERED SL 00R 46.0x24.0	Hstp No killer	Feb 21 1896 Dec 7 1905

CORTEZ – Continued

4	CORTEZ / COLO. CI 10P 27.0	Apr 27 1896 May 16 1910 Hstp Fancy positive star-in-circle, cork smudge, Target, 4-ring 20mm
5	CORTEZ / COLO. CI 10P 29.0	Sep 18 1912 Feb 24 1934 Dplx Grid, 9 bar oval
5.1	CORTEZ. / COLO. / REGISTERED. CI 11P 29.0/19.0	Sep 23 1912 Hstp No killer
6	CORTEZ / COLO. CI 10P 22.0	Aug 7 1923 Oct 24 1935 Mach 7 wavy lines
6.1	CORTEZ / COLO / REGISTERED CI 11P 29.5/20.0	May 31 1930 Hstp No killer
6.2	CORTEZ, / COLO. CI 10P 21.0	Apr 24 1950 Sep 8 1959 Mach 7 wavy lines
7	CORTEZ, COLO. / PARCEL POST CI 11P 30.0/18.5	Jul 9 1941 Hstp No killer
8	CORTEZ, COLO. / M.O.B. CI 11P 29.0/19.0	Jul 9 1941 Hstp No killer



0.1



1



1.1



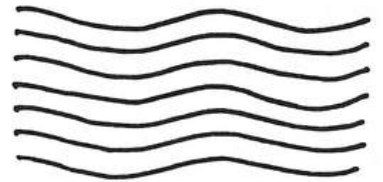
5



5.1



6



6.1



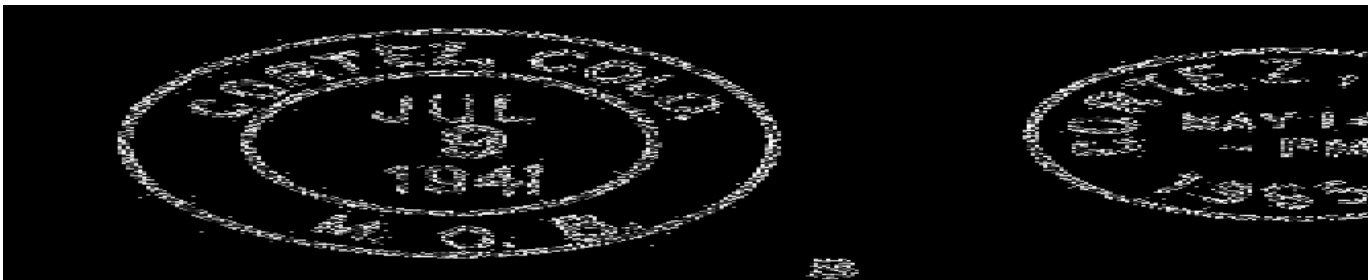
6.2



7

CORTEZ – Continued

9	CORTEZ / COLO. CI 10P 21.0	Mach 7 wavy lines	Oct 14 1938 Nov 12 1965
10	CORTEZ, / COLO. CI 10P 30.0		Feb 26 1941 Dec 15 1952 Dplx Grid, oval with 1 Aug 13 1957
10.1	CORTEZ / COLO. CI 11P 29.0/20.0	Hstp No killer	
11	CORTEZ, COLO. CI 11P 36.0/27.0	Hstp No killer	Oct 21 1958
11.1	Cortez / COLO. RC 10P 37.0x17.0	Hstp No killer, Parcel Post Box	1950s
12	CORTEZ, COLO. CI 11P 31.0/23.0	Rollr 6 wavy lines	Feb 29 1962 Feb 10 1969
13	CORTEZ, COLO. CI 10P 21.0	Mach Slogan in box with bars: NAVAJO TRAIL / HIGHWAY DEDICATION / SEPTEMBER 16, 1962	Aug 10 1962 Sep 16 1962
14	CORTEZ, CO 81321 CI 10P 21.0	Mach 7 wavy lines	Apr 12 1966 Feb 10 1969
15	CORTEZ, CO / 81321 CI 10P 21.0	Mach 7 wavy lines	Jan 29 1970 Jul 15 1976



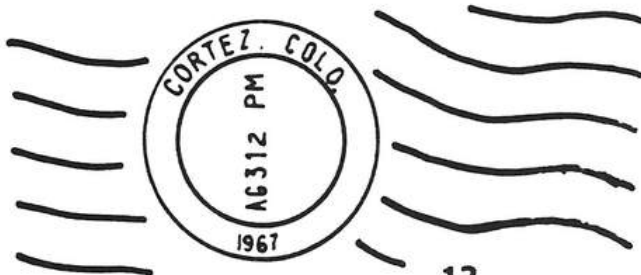
10.1



11



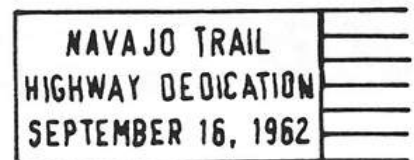
11.1



12



13



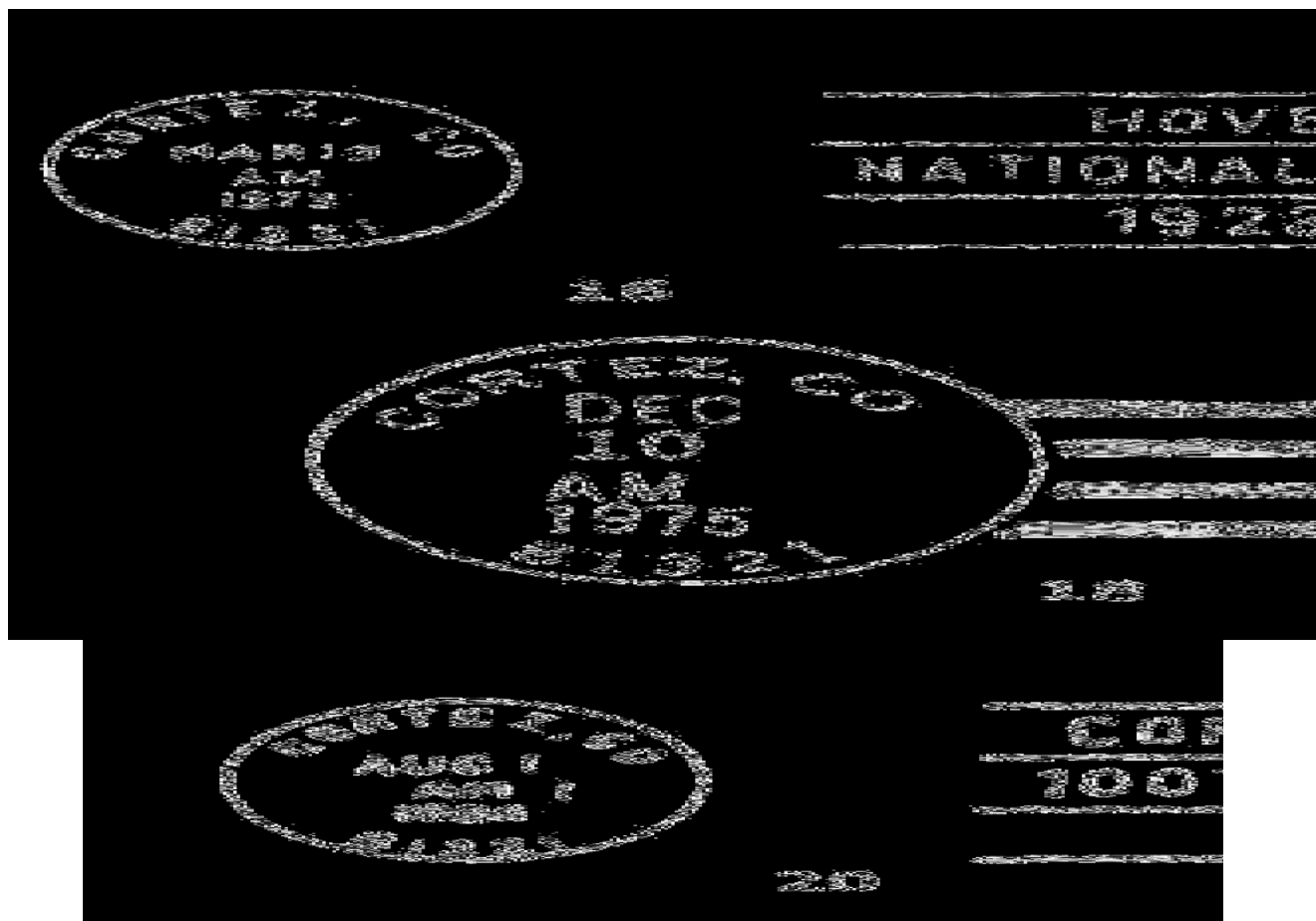
14



15

CORTEZ – Continued

- | | | |
|------|--------------------------------------|--|
| 16 | CORTEZ, CO / 81321
CI 10P 21.0 | Mar 19 1973 Apr 11 1973
Mach Slogan between bars: HOVENWEEP / NATIONAL
MONUMENT / 1923-1973 |
| 17 | CORTEZ, CO 81321
CI 11P 32.0/23.5 | May 26 1975
Rolr 6 wavy lines |
| 18 | CORTEZ, CO / 81321
CI 10P 31.5 | Dec 10 1975 Oct 27 1980
4bars S-23x18mm |
| 19 | CORTEZ, CO / 81321
CI 10P 21.0 | Mar 24 1978 Feb 6 1982
Mach Slogan in box with bars: MAIL EARLY - /
ALWAYS USE / ZIP CODE |
| 19.1 | CORTEZ, CO / 81321
CI 10P 21.0 | Dec 2 1985 Dec 20 1985
Mach 7 wavy lines
[NOT AVAILABLE FOR ILLUSTRATION] |
| 20 | CORTEZ, CO / 81321
CI 10P 21.0 | Aug 1 1986 Jan 31 1987
Mach Slogan with bars: CORTEZ, COLORADO / 100TH
ANNIVERSARY / 1886 - 1986 |
| 21 | CORTEZ, CO / 81321
CI 10P 34.0 | Apr 14 1993 Apr 14 1993
Hstp No killer |



AUXILLARY MARKING

- | | | |
|----|-----------------|--------------------------|
| A1 | cortez, colo. | Jul 29 1941 |
| | SL 00R 48.0x4.5 | Missent to Cortez, Colo. |

Missent to CORTEZ, COLO.

CORTEZ STATIONS

CENTENNIAL STATION

Chronology of the Post Office

Jun 13 1986 Special Commemorative Station

Confirmed types of postal markings

1	Cortez, Colorado 81321 // Centennial Station IR 00R 98.0x31.0	Jun 13 1986 Jun 14 1986 Pict Scene - Indian style emblem at left of cds; Text- 1886 / CORTEZ / 1986
---	--	---



MANCOS CREEK RURAL STATION

In 1961 a post office was established at Mancos Creek as a Rural Station of Cortez. It was located in a trading post that served Indians on the Ute Mountain Reservation and travelers on US 160. The post office lasted less than a year.

The location is on the east side of US 160, where the highway crosses Mancos Creek and north of the creek. When Jim Ozment and I visited the site in September 1994, the buildings were still standing. But they were wide open to vandals and the elements. At that time, it was still possible to speculate where in the main building the post office was situated.

Chronology of the Post Office

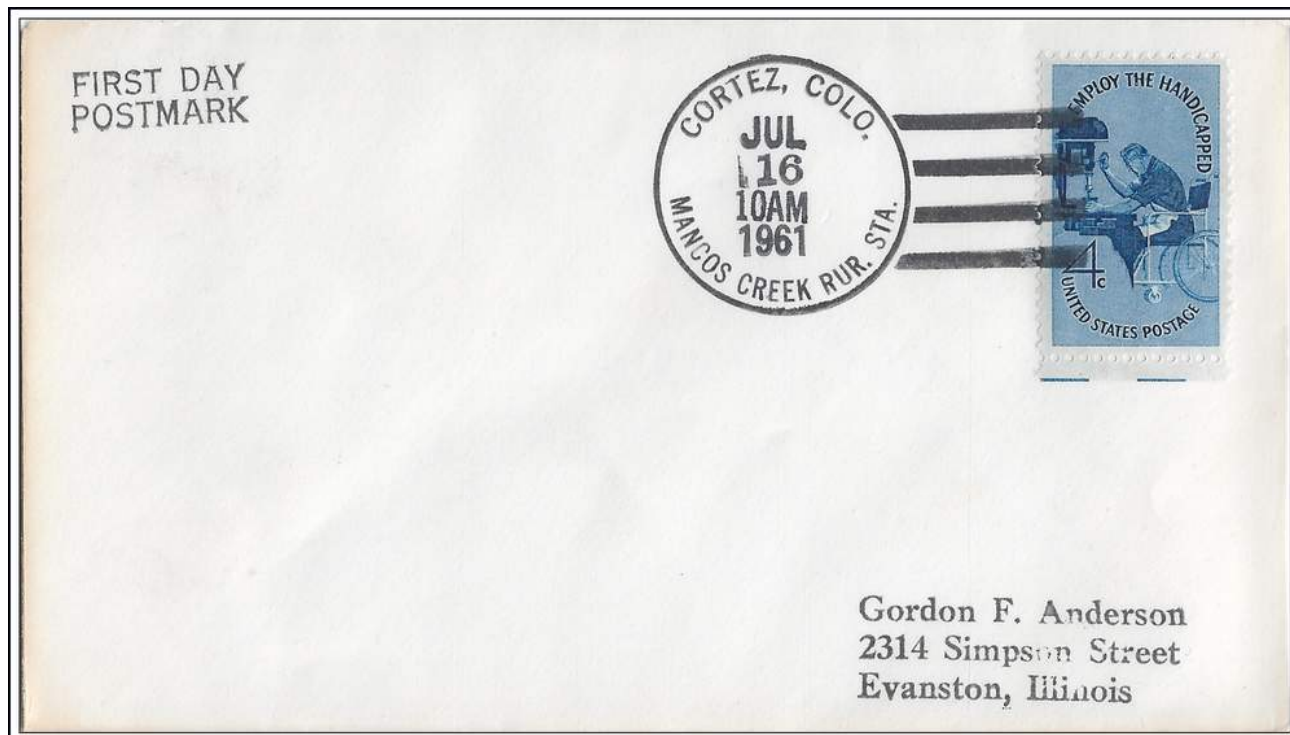
	Rural Station established subsequent to the period covered by the Geographic Site Location Reports
Jul 16 1961	Established as a Rural Station of Cortez at Indian Trading Post
Jun 16 1962	Discontinued

Confirmed types of postal markings

1	CORTEZ, COLO. / MANCOS CREEK RUR. STA. CI 10P 33.5	Jul 16 1961 Jun 16 1962 4bars S-25x20mm
---	---	--



MANCOS CREEK RURAL STATION – Continued



CORTEZ, COLO. / MANCOS CREEK RUR. STA. July 16, 1961
First Day Postmark for this short-lived Montezuma County Rural Station

WAL*MART STATION

Chronology of the Post Office

Apr 17 1999 Special Commemorative Station

Confirmed types of postal markings

- 1 CORTEZ, CO / 81321 :: WAL*MART / STATION Apr 17 1999
 CI 10P 19.0 Pict Scene - Sylvester, Tweety, Daffy Duck, Bugs Bunny



DOLORES

When construction crews of the Rio Grande Southern Railroad reached the site of present day Dolores, there was no community. The railroad created a townsite. At the time, there was an organized community a mile and a half downstream, known as Big Bend, for the big bend in the Dolores River at that point. With the establishment of a new town and the knowledge that the railroad would bypass Big Bend, the merchants, and more importantly the saloonkeeper, packed up their stock and buildings and moved to the new location that became Dolores.

DOLORES - Continued

The original settlement at Big Bend dates from the late 1870's and was on property owned by William "Billy" May. May started a store and was the first postmaster of Dolores. May was followed by George W. Morton and William F. Ordway. Ordway, with a couple of interruptions, held the office from 1886 until 1922. The new townsite was on the former Phelps Ranch at the junction of Lost Canyon with the Dolores River. One of the first merchants in the new Dolores was the Harris Brothers who had previously had a store at Toltec, south of Cortez. They immediately built a brick building and moved their store into it. William Ordway also built a building in the new town and brought the post office from its previous location at Big Bend.

In 1916 the citizens of Dolores made an attempt to win the county seat away from Cortez but they found little support outside of their town for that change.

Dolores was in an area where cattle were the most important business in the area. Farming was largely restricted to growing hay.

Today Dolores is a thriving community on Colorado Highway 145 on the road from Cortez to Rico. It has become popular with tourists and travelers. It is also becoming another favored location for people seeking to retire in the mountains of southwestern Colorado.

The name of the river, and subsequently the town, was given by Father Escalante when his expedition passed through the region. The full name of the river is *Rio de Nuestra Senora de los Dolores*, River of Our Lady of Sorrows.

Chronology of the Post Office

Feb 7 1878	----	NE/4 Sec 7 T37N R15W On the south side of the Dolores and 3 miles west of Lost Canon Creek	
		Document addressed to: William May (Big Bend of the Dolores)	
Apr 5 1878		Established	
Apr 5 1878		May, William M.	
Nov 20 1882		Morton, George W.	
Jul 8 1886		Ordway, William F.	
Feb 12 1892	----	SW/4 Sec 8 T37N R15W 1/4 mile southwest of the Dolores River	
		2-1/4 miles west of Lost Canon Creek	
Sep 20 1894		Pyle, Orville D.	
Dec 22 1894		Ordway, William F.	
Aug 3 1896	----	SE/4 Sec 9 T37N R15W 1/4 mile north of the Dolores River	
		1/2 mile northeast of Lost Canon Creek	
Feb 27 1900		Hosea, Augusta A.	
Mar 2 1905		Ordway, William F.	
Apr 19 1909		Ordway, William F.	P&S
Apr 27 1914	----	SE/4 SE/4 Sec 9 T37N R15W	
Jul 7 1914		Ordway, William F.	P&S
Aug 29 1919		Ordway, William F.	P&S
Sep 7 1922		Greene, Barnett F.	P&S
Oct 12 1926		Greene, Barnett F.	P&S
Dec 18 1930		Greene, Barnett F.	P&S
Jun 26 1935		Rash, Charles H.	Nominated
Jul 8 1935		Rash, Charles H.	Confirmed
Jul 11 1935		Rash, Charles H.	Appointed Presidential
Jul 31 1935		Rash, Charles H.	Commissioned
Aug 1 1935		Rash, Charles H.	Assumed charge
Aug 2 1939		Rash, Charles H.	Nominated
Aug 4 1939		Rash, Charles H.	Confirmed
Aug 9 1939		Rash, Charles H.	Appointed Presidential
Sep 22 1939		Rash, Charles H.	Commissioned
Sep 30 1939		Rash, Charles H.	Assumed charge

DOLORES - Continued

Oct 22 1941	----	SE/4 SE/4 Sec 9 T37N R15W Denver & Rio Grande Southern Station 456 feet southeast of post office 865 feet west and 525 feet north of SE corner of Sec 9	
Jul 29 1960		Rumburg, Mrs. Murl W.	Assumed charge
Aug 3 1960		Rumburg, Mrs. Murl W.	Acting
Jan 22 1961		Bowden, Bill L.	Nominated
Feb 23 1961		Bowden, Bill L.	Assumed charge
Feb 27 1961		Bowden, Bill L.	Acting
Mar 28 1961		Bowden, Bill L.	Confirmed & Appointed Presidential
Apr 11 1961		Bowden, Bill L.	Commissioned
Apr 13 1961		Bowden, Bill L.	Assumed charge
Jul 13 1979		Hatfield, Anna B.	Officer in charge
Feb 23 1980		Gardner, Robert L.	Appointed



Post Office – Dolores, Colorado

Photograph by William H. Bauer

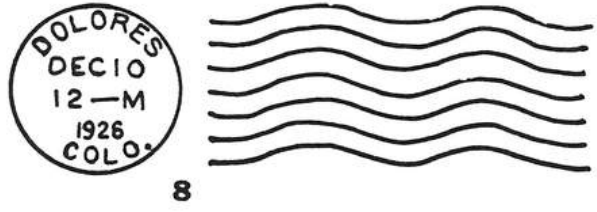
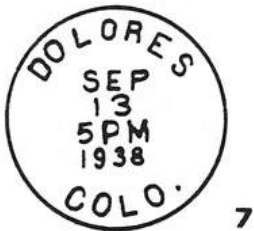
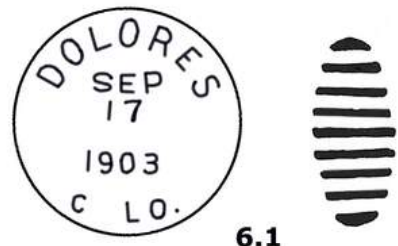
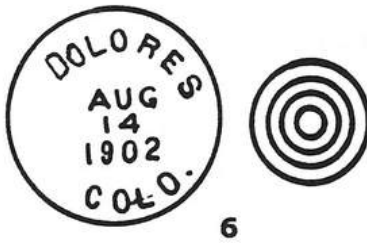
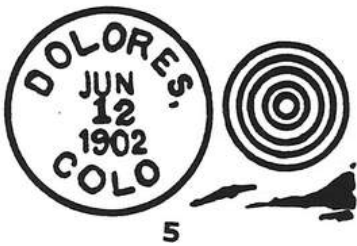
September 20, 2000

Confirmed types of postal markings

1	DOLORES, COLO. / WM. M. MAY, P.M. CI 20H 32.0/29.0	Hstp Target, 4-ring 18mm	Jun 24 1880 Jul 26 1881
2	DOLORES / COLO. CI 10P 27.0	Hstp Cork, Negative X-roads, Target, 4-ring	Nov 15 1887 Aug 30 1889
3	DOLORES / COLO. CI 10P 28.0	Hstp Cork, Negative X-roads	Oct 29 1888 Jan 24 1895
4	DOLORES / COLO. CI 10P 27.0	Hstp Cork, Smudge	Feb 15 1900 Nov 26 1900
5	DOLORES, / COLO. CI 10P 26.0	Hstp Target, 4-ring 17mm	Apr 19 1901 Jun 18 1902
6	DOLORES / COLO. CI 10P 28.0	Hstp Target, 4-ring, thin letters	Aug 14 1902

DOLORES - Continued

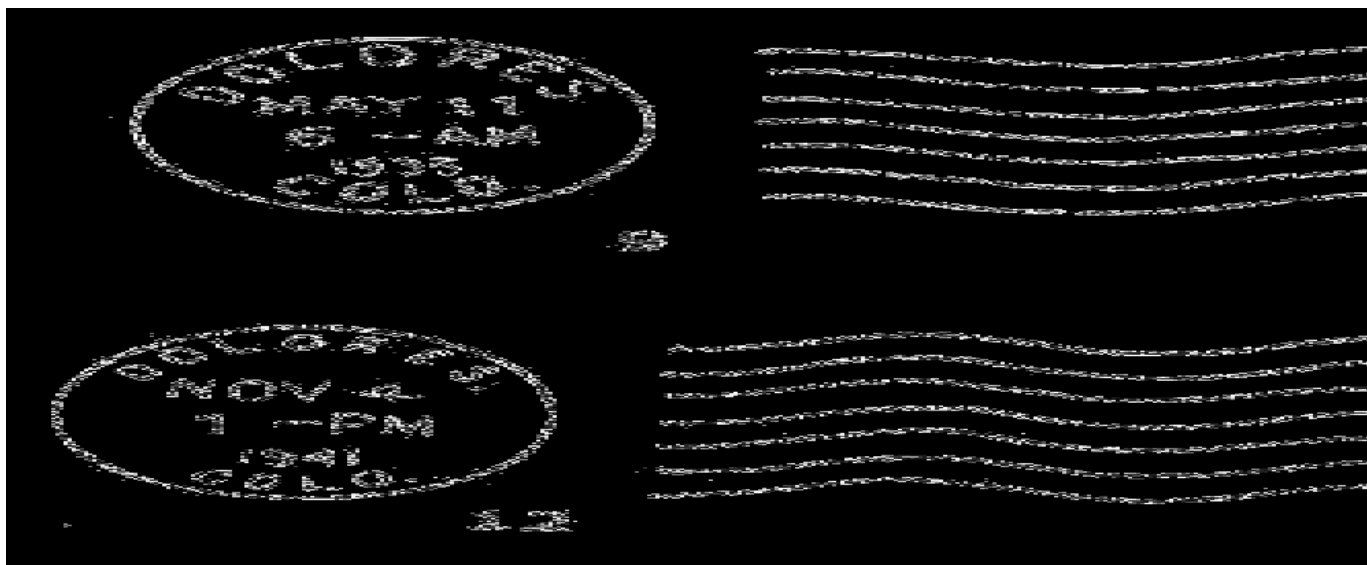
- | | | |
|-----|--------------------------------|---|
| 6.1 | DOLORES / COLO.
CI 10P 30.0 | Sep 17 1903 Oct 8 1913
Dplx Grid, 9 bar oval letters wide spaced |
| 7 | DOLORES / COLO.
CI 10P 29.0 | Dec 21 1911 Sep 20 1938
Dplx Grid, 9 bar oval
Apr 18 1919? |
| 7.1 | DOLORES, COLO.
CI 10P 30.0 | Hstp No Killer 13c Reg letter yr date not clear |
| 8 | DOLORES / COLO.
CI 10P 22.0 | Jan 6 1926 Dec 10 1926
Mach 7 wavy lines |



- | | | |
|------|---|--|
| 9 | DOLORES / COLO.
CI 10P 23.0 | Oct 2 1929 Oct 15 1940
Mach 7 wavy lines |
| 10 | DOLORES, COLO / PARCEL POST
CI 11P 28.0/18.0 | Nov 24 1936
Hstp No killer, used on parcel tag with
auxiliary mark MAILED ON RURAL ROUTE |
| 11 | DOLORES, COLO. / REGISTERED
CI 11P 28.0/19.0 | Jun 10 1936 Dec 16 1941
Hstp No killer |
| 12 | DOLORES, / COLO.
CI 10P 22.0 | Aug 25 1941 Aug 2 1959
Mach 7 wavy lines |
| 13 | DOLORES / COLO.
CI 10P 30.0 | Jul 20 1951 Jan 13 1960
Dplx Grid, diamond with 1 |
| 14 | DOLORES / COLO.
CI 11P 29.0/18.0 | Dec 11 1962
Hstp No killer |
| 14.1 | DOLORES, COLO. / USPO
CI 11P 30.0/20.0 | Jun 11, 1963
Hstp No killer |
| 14.2 | DOLORES, / COLO
CI 10P 22.0 | Jun 7 1963
Mach 7 wavy lines |

DOLORES – Continued

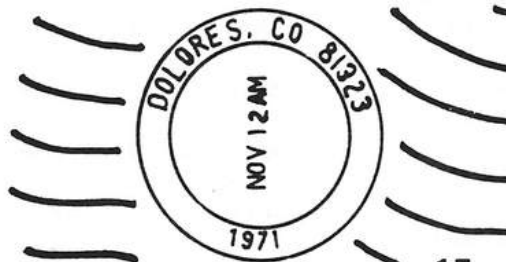
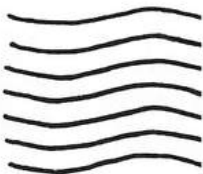
15	DOLORES, CO 81323 CI 11P 32.0/23.5	Rolr 7 wavy lines	Nov 12 1971 Mar 31 1976
16	DOLORES, CO / 81323 CI 10P 21.0	Mach 7 wavy lines	Mar 10 1976 Jul 3 1990
17	DOLORES, CO / 81323 CI 10P 32.0	4bars S-23x19mm	Oct 27 1980 Jul 11 2000
18	DOLORES CO 81323 / USPS CI 10P 29.0/19.0	Hstp No killer	Sep 19 2000



14.1



14.2



15



DOLORES STATIONS

ANASAZI HERITAGE CENTER DEDICATION STATION

Chronology of the Post Office

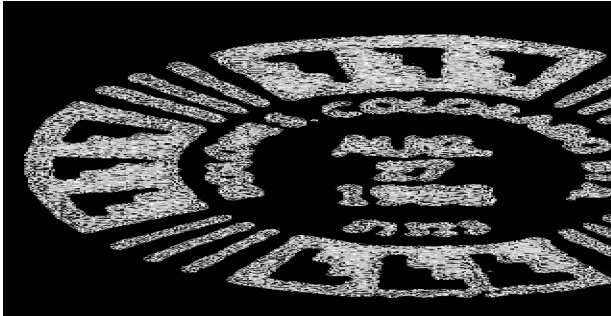
Aug 27 1988 Special Commemorative Station

DOLORES STATIONS - Continued

ANASAZI HERITAGE CENTER DEDICATION STATION - Continued

Confirmed types of postal markings

- 1 DOLORES, COLORADO STA. / 81323 Aug 27 1988
CI 10F 34.0 Pict Scene - Frame is an Indian design, 3 bars and
Anasazi / Heritage Center / Dedication



DOLORES STATION

Chronology of the Post Office

Jun 19 1990 Special Commemorative Station

Confirmed types of postal markings

- 1 DOLORES, COLORADO STA. / 81323 Jun 19 1990
CI 10F 37.0 Pict Scene - Frame is an Indian design, 3 bars and Four Corners
Tribute / June 19-21, 1990 / Governors Conference



GALLOPING GOOSE STATION

Chronology of the Post Office

Jul 7 2000 Special Commemorative Station

Confirmed types of postal markings

- 1 DOLORES, COLORADO 81323 :: GALLOPING GOOSE STATION Jul 7 2000
CI 10P 29.0 Pict Text Only - RIO GRANDE / SOUTHERN



FORMBY

Formby is one of the post offices for which I must rely on Ray Newburn's *Postal History of the Colorado San Juan* for any information. Newburn believes that it may have been a bit more than the usual roadhouse and store at a river crossing. There were and still are several ranches in the area.

It is a bit difficult to position the site of Formby on the ground. My best approximation is that it was on ground now occupied by the Cabin Creek Campground on the north side of the Dolores River. Getting there is also somewhat complicated. It should be possible to come down river from Dolores; however, the McPhee Reservoir may prevent that. I chose to come to Formby from Cahone in Dolores County.

From the principal intersection in Cahone (on US 491) drive east three miles to the intersection of County Roads R and 16. Turn south a little more than a mile. Turn east on an unmarked road and follow the signs pointing to the Dolores River. Cross the Dolores River and go in the direction of the Lone Dome Recreation Area. The Cabin Creek Campground is three miles from the intersection on the north side of the river. The Forest Service activity at the campground has obliterated any signs of the earlier occupation. The location of Formby is in the Canyon of the Dolores River. This is not a deep canyon, but it is one of tall sandstone cliffs that create a beautiful setting. Water from the river provides irrigation for meadows on the valley floor.

Chronology of the Post Office

Apr 15 1895	----	NW/4 Sec 23 T39N R17W Sketch map places it on the north bank of the Dolores River, west-northwest of Lone Dome
		Proposed postmaster - John C. Ormiston
May 11 1895		Established
May 11 1895		Ormiston, John C.
Dec 18 1900		Ormiston, Elmer
Jan 29 1901		Ordered closed
Feb 14 1901		Discontinued Papers to Lone Dome

Confirmed types of postal markings

NO POSTAL MARKINGS HAVE BEEN REPORTED FROM FORMBY

GOLCONDA

The post office at Golconda lasted less than a year. It began as a placer gold camp on the north side of the West Mancos River at the North and South Forks of that river. A Captain George A. Jackson is credited with the gold discovery and the establishment of the town. A crude stamping mill run by water power, a store and the post office were the services for the community. The post office was short-lived but mining struggled on for a few more years.

From US 160 at Mancos drive north on Colorado Highway 184. Three tenths of a mile north, turn east on Forest Service Road 561. It is ten miles to the Transfer Creek Campground, where the road forks; keep right for another half mile. After all that, you can go no further, although maps indicate that the road should continue and eventually become a Jeep trail to Golconda. I turned back and drove into the West Mancos Overlook from where you have a spectacular view up the canyon towards the site of Golconda. Enjoy the view and then return to Mancos.

Latitude = 37:27:27 North Longitude = 108:09:06 West

GOLCONDA – Continued

Chronology of the Post Office

Apr 4 1894	----	Unsurveyed Mineral Land On the Mancos River Dolores is 20 miles northwesterly Mancos 16 miles southwesterly No standard sketch map There is a hachured style sketch map that shows Golconda on the West Fork of the Mancos River, on the north side of the portion where it trends east-southeasterly, and east of the first tributary from the north. Also, west of where the river forks Accuracy of map is questionable. Proposed postmaster - Mark W. Atkins
Apr 26 1894		Established
Apr 26 1894		Atkins, Mark W.
Jul 1 1895		Discontinued Mail to Mancos

Confirmed types of postal markings

NO POSTAL MARKINGS HAVE BEEN REPORTED FROM GOLCONDA

GRADENS

Gradens was a lumber camp located on the Rio Grande Southern Railroad. The only historical reference I have found to the camp is in Ray Newburn's *Postal History of the Colorado San Juan*.

According to Newburn, T. C. Graden built a sawmill at milepost 116.3 on the railroad. The railroad installed a spur track called Graden's Spur. The mill was acquired by F. W. Hamlin and P. Hiebler who added a planing, lath and shingle mill that eventually employed as many as 100 men. The mill was eventually sold and in 1902 it was moved to Arloa (Glencoe). With the departure of the mill, Gradens died.

In 1994, Jim Ozment and I set out in search of Gradens. As for Golconda, begin on US 160 at Mancos and drive north on Colorado 184 to County Road 40. Drive north on Road 40 to Millwood Road and then west on it about a half-mile. This will place you on the long abandoned grade of the Rio Grande Southern. To the south of the road is an open area with some large shallow pits. We stopped to explore this area and upon examination of an anthill discovered that the anthill was composed of sawdust, not sand. Further snooping turned up the scattered ruins of some buildings. Therefore, we concluded that we had found Gradens.

It is important to note that this location does not agree with that given in the Post Office Department Geographic site Location Reports; a location that is not on the railroad. The site we determined to be Gradens, and which agrees with Ray Newburn's location is in the NE/4 of Section 6, Township 35 North, Range 13 West.

Chronology of the Post Office

Jun 15 1896	----	SW/4 Sec 34 T37N R13W 50 feet east of the Rio Grande Southern W.H.B Note: This location is very doubtful. A location at NE/4 Sec 6, T36N R13W, is a lumber mill on the Rio Grande Southern and is more acceptable. [SRM: I read the PO Site Report as Sec 32-1 and the map shows Gradens on the border of the two sections. This is only a half mile east of the site suggested in WHB's note.] Proposed postmaster S. B. Jackway
Jul 7 1896		Established
Jul 7 1896		Jackway, Seymour B.
Feb 21 1899		Stubbs, Frank W.
Jul 23 1903		Mayo, Clarence H.
Nov 16 1903		Ordered closed
Nov 30 1903		Discontinued Mail to Arloa

Confirmed types of postal markings

1	GRADENS / COLO.	Dec 17 1898 Aug 19 1903
	CI 10P 28.0	Hstp No killer present

GRADENS – Continued



HOGG

Hogg was another lumber camp on the Dolores River. It was connected with the Sayre and Newton sawmill and was where A. A. Rust's logging railroad joined the Rio Grande Southern Railroad at Hogg Spur. Activity here lasted only a few years, and the site is difficult to identify today.

Drive east from Dolores on Colorado Highway 145. Four miles east of Dolores the highway turns quickly to the northeast and the location given in the Geographic Site Location Report is about a mile further. There is one building in the vicinity and it is near a fish hatchery. The site was on the north (west) side of the river.

One reference appears to equate Hogg with a site named Stapleton. Stapleton is noted on the USGS Topographic map of Montezuma County, but is about a mile northeast of the plotted site for Hogg.

Chronology of the Post Office

Nov 3 1902	---	SW/4 Sec 5 T37N R14W 1/4 mile north of the Dolores River 1200 feet north of Hogg Spur, Rio Grande Southern RR Proposed postmaster - Peabody A. Brown
Mar 12 1903		Established
Mar 12 1903		Brown, Peabody A.
Dec 15 1904		Durwood, Alexander
Feb 16 1906		Ordered closed
Mar 15 1906		Discontinued Mail to Dolores

Confirmed types of postal markings

1	HOGG / COLO. CI 10P 28.0	Jul 14 1903 Aug 21 1905	Hstp Not present
---	-----------------------------	-------------------------	------------------



HYNES

Hynes was located on the East Fork of the Dolores River. There was some farmland in the area but cattle and sheep were a more dominant activity. The post office lasted less than a year; thus it was never more than a rural or ranch facility.

LEBANON

Some care must be taken in regards to historical references to the community of Lebanon. In 1875-1876 there was a settlement by that name on the edge of what is now Rye in Pueblo County. The Lebanon in Montezuma County dates from 1908 and because of similar settings, it would be easy to mistake a reference to Lebanon in Pueblo County for the Lebanon in Montezuma County. Both settlements were in country where cedars were common and the name Lebanon is considered a reference to the biblical Cedars of Lebanon.

Lebanon in Montezuma County was established in 1908, reportedly by the Railway Building and Loan Company of Pueblo. On its face, this sounds questionable and I wonder why a Building and Loan from Pueblo would be operating in far southwestern Colorado.

Irrigation companies were formed in this area as early as 1889 but with a lack of users the companies soon went broke. A new company formed in 1902, was in 1907, able to vote a bond issue and to acquire the assets of the previous company. The new company laid out the town of Lebanon on a 100-acre site including a dense cedar grove (*Juniperus scopulorum*). It is reported that the early residents of the area called it Hardscrabble (Again, be careful, as this is another name from the early days of Pueblo County and there was a Hardscrabble Post Office in Routt County (1925).

The original townsite included a small hotel, general store, company office and several residences. A number of 10-acre orchards were planted in the vicinity and even today fruit growing is an activity of farmers around what remains of Lebanon. In spite of everything the company that fostered Lebanon also went broke.

To reach Lebanon, from Arriola on US Highway 491, drive east three miles to Lebanon Road and then north one mile to Lebanon. The school at Lebanon has been extensively renovated and now appears to be a private residence. There are some other farms and ranches in the area.

Latitude = 37:27:26 North Longitude = 108:35:27 West

Chronology of the Post Office

Sep 29 1908	Established	
Sep 29 1908	Parker, Candace	
Jan 19 1909	----	SE/4 Sec 15 T37N R16W
Apr 23 1909	Rawson, Pearl	
Dec 9 1909	Forquer, Bessie	
Jan 13 1912	Perdue, Maude	
Apr 28 1914	----	SE/4 SE/4 Sec 15 T37N R16W
Jul 8 1914	Caughy, Bernice C.	
Apr 6 1915	Campbell, Washington E.	
May 16 1917	Parsons, Martin B.	
May 17 1920	Jackson, Eldon	
Jun 11 1927	Greenwood, Goldie	Acting
Nov 23 1928	Greenwood, George A.	Confirmed
Dec 21 1928	Greenwood, George A.	Commissioned
Jan 1 1929	Greenwood, George A.	Assumed charge
Jan 15 1935	Greenwood, Mrs. Goldie E.	Assumed charge
Jan 29 1935	Greenwood, Mrs. Goldie E.	Acting
Aug 3 1936	Dobbins, Mrs. Verna Pim	Confirmed
Aug 26 1936	Dobbins, Mrs. Verna Pim	Commissioned
Sep 3 1936	Dobbins, Mrs. Verna Pim	Assumed charge
Sep 19 1937	Heaton, Alton P.	Assumed charge
Sep 30 1937	Heaton, Alton P.	Acting
Oct 14 1937	Heaton, Alton P.	Confirmed
Ocr 27 1937	Heaton, Alton P.	Commissioned
Apr 3 1939	Ordered closed	Effective date Apr 15 1939 Mail to Dolores

LEBANON – Continued

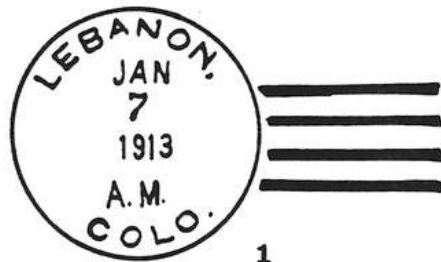
Apr 14 1939 Modified Effective date May 15 1939
 Apr 18 1939 Modifying order rescinded & Ordered closed
 Apr 15 1939 Discontinued

Confirmed types of postal markings

0.1	LEBANON / COL- CI 10P 32.0	Dplx Grid, 9 bar oval	Apr 11 1909?
1	LEBANON, / COLO. CI 10P 32.0	4bars S-??x13mm	Apr 28 1911 Feb 4 1913
2	LEBANON, / COLO. CI 10P 32.0	4bars S-25x19mm	Sep 4 1917 Feb 10 1922
3	LEBANON. / COLO. CI 10P 34.0	4bars S-25x19mm	Jul 27 1931 Apr 15 1939



0.1



1



2



LEWIS

The development of agriculture in western Montezuma County depends on irrigation. Full development of farming in the area did not truly flourish until the completion around 1908 of the Dolores No. 2 Canal.

One of the early settlers was William R. Lewis who acquired the townsite in 1910. Mr. Lewis erected a store and in 1911 became the first postmaster of the settlement that assumed his name.

In 1994 the post office was a short distance south of the still active community, in a CONOCO gas station at the junction of Colorado 184 with US Highway 491.

Latitude = 37:29:59 North Longitude = 108:40:07 West

Chronology of the Post Office

Feb 11 1911	----	NE/4 Sec 1 T37N R17W	Brumley Draw is 1/2 mile west of post office
Sep 7 1911		Established	
Sep 7 1911		Lewis, William R.	
Apr 24 1914	----	NE/4 Sec 1 T37N R17W	80 rods east of Brumley Draw
Jun 12 1918		Miner, Elizabeth E.	
Jan 14 1925		McAfee, C. Clifford	Acting
Feb 7 1925		McAfee, C. Clifford	Appointed & Confirmed
Feb 21 1925		McAfee, C. Clifford	Commissioned

LEWIS – Continued

Oct 21 1941	----	NE/4 Sec 1 T37N R17W	
May 3 1944		Fawell, Richard C.	Possession & Acting
May 4 1944		Fawell, Richard C.	Assumed charge
Jan 11 1945		Fawell, Richard C.	Appointed
Jan 29 1945	----	SE/4 Sec 36 T38N R17W	A move 225 yards west of a previous location
Mar 19 1945		Fawell, Richard C.	Commissioned
Mar 31 1945		Fawell, Richard C.	Possession
Apr 6 1945	----	SE/4 Sec 36 T38N R17W	A move 225 yards west of a previous location [SRM: Yes, the postmaster submitted same move twice. ??]
Jul 31 1957		Stanley, Mrs. Elsie H.	Possession & Acting
May 30 1958		Stanley, Mrs. Elsie H.	Appointed & Possession as postmaster
Dec 29 1976		Stanley, Mrs. Betty	Officer in charge
Apr 8 1976		Stanley, Mrs. Betty	Appointed

Confirmed types of postal markings

1	LEWIS, / COLO. CI 10P 31.0	4bars S-24x18mm	Feb 6 1912 Feb 18 1914
2	LEWIS, / COLO. CI 10P 33.0	4bars S-24x19mm	Mar 30 1932 Nov 16 1936
3	LEWIS / COLO. CI 10P 33.0	4bars S-24x19mm	Mar 14 1938 Feb 25 1950
4	LEWIS / COLO. CI 10P 32.0	4bars S-24x19mm	Jun 2 1953 Mar 8 1960
5	LEWIS / COLO. CI 10P 32.0	4bars S-25x20mm	Feb 14 1962 Jul 15 1963
6	LEWIS, CO / 81327 CI 10P 32.0	4bars S-24x19mm	Aug 24 1965 May 9 1968
7	LEWIS, CO / 81327 CI 10P 31.5	4bars S-25x19mm	Apr 30 1971 Sep 26 1994
7.1	LEWIS, CO / 81327 CI 10P 32.0	4bars S-25x19mm	Sep 8 1971
8	LEWIS, CO / 81327 CI 10P 23.0	Mach 7 wavy lines	Mar 4 1986 Sep 1 1998
9	LEWIS CO / 81327 CI 10P 34.0	4bars S-16x24mm	Feb 26 2002

[NOT AVAILABLE FOR ILLUSTRATION]



LEWIS – Continued



LONE DOME/LONEDOME

In 1885 Croffutt described Lone Dome as, “A ranche post office on the Rio Dolores, 15 miles northwest of Dolores. Cattle and sheep are the principal occupation.”

In September 1994 Jim Ozment and I ventured into the area. After visiting the Cabin Creek Campground (see Formby) we continued up the Dolores River another two miles. At that distance we found a ruined log building with the roof caved in and evidence of other structures having been in the immediate area. The building appears to have been a stock shed, not a house. There was also a circular concrete platform, some 10-12 feet in diameter. I have no idea what purpose it served. Between this location, which we believe to have been Lone Dome, and the campground there is another place where there has been agricultural activity, with some A-frames that were probably used for loading hay. At the same place there is a lot of sawdust on the ground, so there may also have been a small sawmill there.

Ray Newburn believes that Lone Dome was originally at the same place as Formby; that it was moved several miles up the Dolores River and was later moved back to the original site. He bases this on locations and distances shown on postal route maps. The Geographic Site Location Reports contain only a single location for Lone Dome but that does not eliminate the possibility of other locations for the post office. I know that not all post office moves were officially reported to Washington.

Latitude = 37:37:16 North Longitude = 108:39:56 West

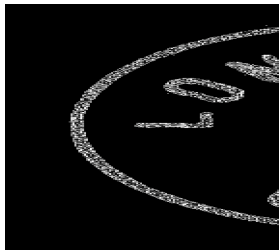
Chronology of the Post Office

Sep 29 1883	----	Unsurveyed Land On north side of Dolores River 10 miles west of Beaver Creek Sketch map would place it only a short distance south of the county line Proposed postmaster - Laura M. Dillon
Oct 25 1883		Established
Oct 25 1883		Dillon, Mrs. Laura M.
Aug 9 1888		Thomby, Myleo P. H.
Jul 9 1890		Ormiston, James C.
Dec 6 1894		Spelling changed to Lonedome
Dec 6 1894		Long, Sarah E.
Dec 21 1897		Jones, Lydia E.
Aug 29 1900		Bradford, Seville H.
Jul 19 1904		Ormiston, Louisa B.
Dec 3 1906		Ordered closed
Jan 2 1907		Discontinued Mail to Dolores

Confirmed types of postal markings

1	LONE DOME / COL. CI 10P 27.0	Feb 15 1889 Hstp Cork, Smudge
---	---------------------------------	----------------------------------

LONE DOME/LONEDOME – Continued



LONE DOME / COL. February 5, 1889

The only reported example of a Lone Dome postmark, and made more interesting by use of the 5-cent Garfield envelope paying the Universal Postal Union rate to England

MANCOS

The first reported white visitors to this area were members of the Escalante expedition in 1776. According to tradition, while crossing the river, one of the party fell from his horse and injured his hand. The river was thus given the name Mancos, Spanish for "Maimed."

In 1875, the early days of the gold and silver rush to the San Juan and La Plata Mountains, a group of men under the leadership of a Captain Moss passed through the valley. Some of the party returned later to take up farming along the Mancos River. Cowboys driving cattle to Utah also recognized the possibilities of the region and some of them likewise returned to live in the Mancos Valley.

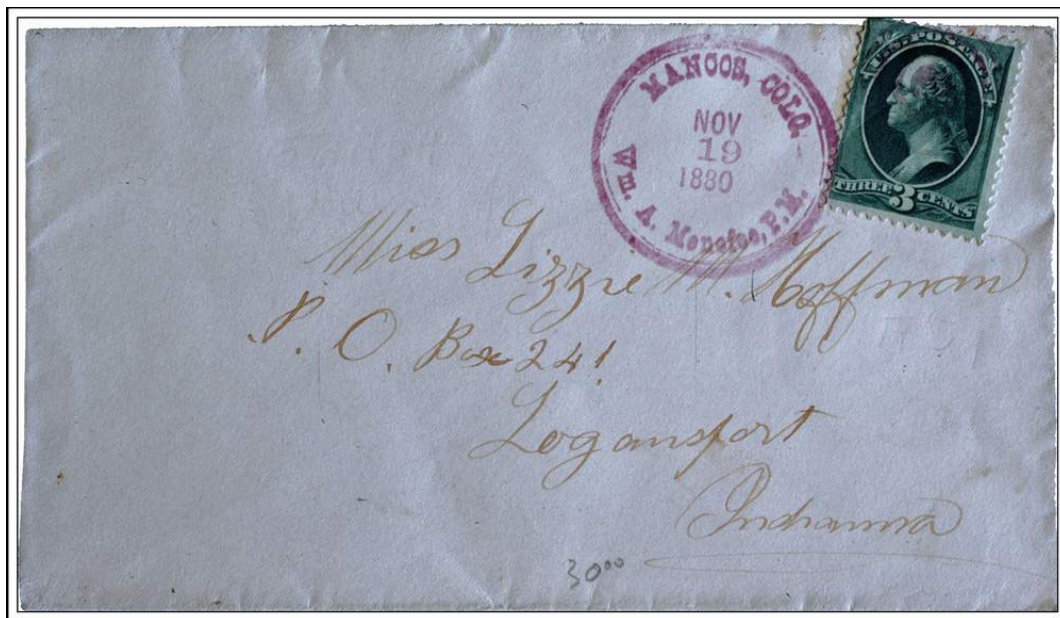
A post office was first established in 1877 and for the next four years it moved from ranch to ranch as the postmaster changed. By 1880 it was located at the ranch of William A. (Andy) Menefee. In 1881, George Bauer came to the Mancos Valley with the intention of establishing a store at the Menefee Ranch. Andy Menefee did not want liquor being sold on his property; thus Bauer chose a site three miles to the southwest. His settlement grew and in August 1881 acquired the Mancos Post Office. Mancos was

MANCOS – Continued

now firmly established at its permanent location. Bauer enlarged his store, established a bank, and became the leading citizen of the area. In 1881 a number of Mormons entered the valley and by 1885 Mancos had a reported population of 200.

When Montezuma County was established in 1889, Mancos lost the bid for the county seat to newer and smaller Cortez, a situation it has never fully accepted. Today Mancos is still a thriving agricultural supply center for eastern Montezuma County and western La Plata County. It also serves many of the tourists who come to visit Mesa Verde National Park. In recent years, Mancos has also begun to attract retirees seeking a pleasant, rural environment.

Modern Mancos is located on US Highway 160 about five miles west of the Montezuma-La Plata County line. An earlier site was at a ranch a mile and a half west of present day Mancos, on the south side of US 160.



MANCOS, COLO. / Wm. A. Menefee, P.M. November 19, 1880

Latitude = 37:20:42 North Longitude = 108:17:19 West

Chronology of the Post Office

Feb 19 1877	Established	
Feb 19 1877	Merritt, John	
Feb 13 1878	----	NE/4 Sec 31 T36N R13W 1/2 mile northwest of the Mancos River and on the southeast side of Chicken Creek
Apr 5 1878	McIntyre, John F.	
Jun 30 1880	Reid, L. S.	
Aug 11 1880	Menefee, William A.	
Aug 9 1881	Bauer, George	
Jan 29 1891	Humiston, Edward E.	
Feb 10 1892	----	SE/4 Sec 28 T36N R13W
May 17 1894	Burghardt, Jared H.	
Nov 30 1898	Hutchinson, Robert N.	
Oct 28 1904	Martin, Wesley A.	
Dec 13 1906	Martin, Wesley A.	P&S
Jan 10 1911	Samson, Newton W.	P&S

MANCOS – Continued



Post Office – Mancos, Colorado

Photograph by William H. Bauer

August 26, 2000

Apr 27 1914	----	S/4 Sec 28 T36N R13W 218 feet north of the Mancos River 2,000 feet southeast of Chicken Creek	
Jan 12 1915		Brown James M.	P&S
Aug 5 1919		Brown James M.	P&S
Dec 18 1923		Brown James M.	P&S
Dec 17 1927		Brown James M.	P&S
Jan 4 1932		Brown James M.	Nominated
Jan 22 1932		Brown James M.	Confirmed
Feb 24 1932		Brown James M.	Commissioned
Feb 4 1936		Brown James M.	Nominated
Mar 5 1936		Brown James M.	Confirmed
Mar 11 1936		Brown James M.	Appointed Presidential
Apr 2 1936		Brown James M.	Commissioned
Apr 26 1940		Brown James M.	Nominated
May 2 1940		Brown James M.	Confirmed
May 8 1940		Brown James M.	Appointed Presidential
Jun 14 1940		Brown James M.	Commissioned
Jun 24 1940		Noland, Mrs. Gertrude	Acting
Jul 1 1940		Noland, Mrs. Gertrude	Assumed charge
Aug 19 1940		Noland, Mrs. Gertrude	Nominated
Aug 24 1940		Noland, Mrs. Gertrude	Confirmed
Aug 29 1940		Noland, Mrs. Gertrude	Appointed Presidential
Sep 13 1940		Noland, Mrs. Gertrude	Commissioned
Sep 30 1940		Noland, Mrs. Gertrude	Assumed charge

MANCOS – Continued

Oct 21 1941	----	SW/4 Sec 28 T36N R13W Railroad 1/4 mile northwest of Post Office Mancos River 30 feet south of Post Office
Aug 31 1967		Barrett, James A. Acting
Dec 15 1967		Barrett, James A. Appointed
Jan 26 1968		Barrett, James A. Assumed charge

Confirmed types of postal markings

0.1	MANCOS, COL		Feb 7 1880
	MS	Mscp Pen cancel	
1	MANCOS, COLO / Wm. A. Menefee, P.M.		Nov 19 1880 May 16 1881
	CI 20H 33.0/29.0	Hstp Target, 4-ring 18mm	
1.1	MANCOS, COLO		Apr 18 1882
	CI 20H 33.0/29.0 Hstp	Target, 4-ring Postmaster's name removed	
2	MANCOS / COL.		Jul 18 1887
	CI 10P 26.0	Hstp Cork, 5-bar grid	
3	MANCOS / COLO.		Apr 20 1888 Feb 6 1891
	CI 10P 27.0	Hstp Cork, Grid	
4	MANCOS, / COLO.		Oct 26 1892 Dec 5 1892
	CI 10P 33.0	Hstp Cork, Smudge	
4.1	MANCOS / COLO.		Aug 19 1893 Jul 24 1903
	CI 10P 28.0	Hstp Cork, Smudge	
5	MANCOS / COLO.		Dec 13 1895 Nov 7 1897
	CI 10P 28.0	Hstp Cork, Negative X-roads	
6	MANCOS / COLO.		Feb 4 1898 Jul 31 1902
	CI 10P 29.0	Hstp Cork, Smudge	
7	MANCOS, COLO. / Registered No. ___		Nov 29 1901 Nov 7 1902
	SL 00R 45.0x15.0	Hstp Double oval parcel post killer	
7.1	MANCOS, COLO. / REC'D.		Oct - 1899 Jun 1 1908
	CI 10P 29.0	Hstp No killer, receiving mark	
8	MANCOS / COLO.		Mar 18 1907 Jun 19 1915
	CI 10P 29.0	Dplx Grid, 9 bar oval	
8.1	MANCOS / COLO.		Dec 30 1923 Nov 2 1929
	CI 10P 30.0	Dplx Grid, 9 bar oval	
9	MANCOS, / COLO.		Aug 7 1930 Feb 11 1935
	CI 10P 33.0	4bars S-23x20mm	
10	MANCOS. / COLO.		Dec 27 1935 Sep 15 1948
	CI 10P 30.0	Dplx Grid, pointed oval with 1	
10.1	MANCOS / COLO.		Aug 22 1947
	RC 10P 37.0x17.0	Hstp No killer	
11	MANCOS / COLO.		Nov 22 1957 Apr 8 1963
	CI 10P 20.5	Mach 7 wavy lines	
12	MANCOS, CO / 81328		Jun 26 1970 Jul 3 1990
	CI 10P 20.0	Mach 7 wavy lines	
13	MANCOS, CO / 81328		Oct 22 1969 May 20 1986
	CI 10P 31.0	4bars S-23x18mm	
13.1	MANCOS, CO / 81328		Oct 17 1985
	CI 10P 21.0	Mach 7 wavy lines	
14	MANCOS, CO / 81328		Dec 19 1991 Apr 14 1992
	CI 10P 32.0	4bars S-25x19mm	
15	MANCOS CO 81328 / USPS		Sep 20 2000
	CI 11P 29.0/20.0	Hstp No killer	

MANCOS – Continued

*Mancos col
2/7/80*

0.1



1



1.1



2



3



4



4.1



8



8.1



9



10



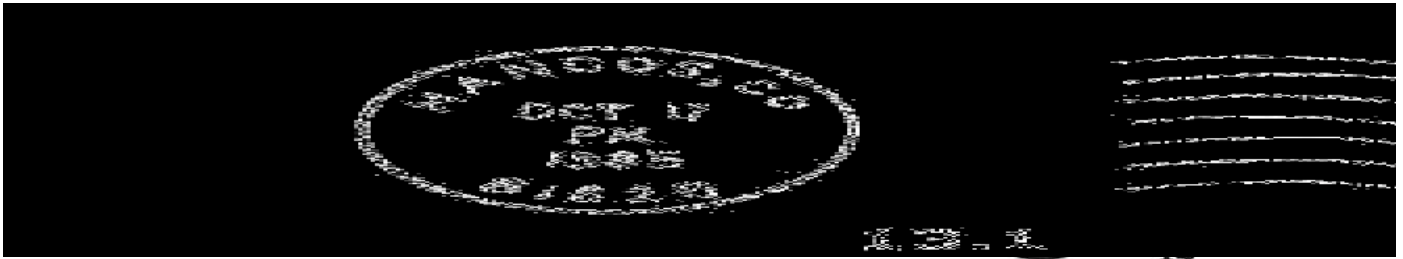
10.1



11



MANCOS – Continued



AUXILLARY MARKING

**A1 mancos, colo
IR 00R 32.0x16.0**

**Nov 29 1901
Hstp Pointing hand "RETURN TO / WRITER"
[NOT AVAILABLE FOR ILLUSTRATION]**

McELMO

McElmo Creek flows nearly due west from the western edge of Cortez, in a canyon of the same name. For much of its length the valley is about a half-mile wide at most. Thanks to water from irrigation, the valley is productive with hay, some grain and fruit being grown at a number of places along its course.

From 1891 to 1932 the McElmo Post Office served the western end of McElmo Canyon. McElmo was not an organized community but rather a ranch post office that often moved from one location to another as the position of postmaster changed hands.

Four locations for the McElmo Post Office are found in the Post Office Department Geographic Site Location Reports. Beginning on US Highway 160, just north of the Cortez Airport, drive west on McElmo Road. The first site (1891) is twenty miles west from US 160. To the south of the road and along the creek, is a storage shed for hay.

Two miles further is the 1917 site. Here there are some old buildings on the south side of the road and the remnants of a stone building. A half mile further is the third site (1912?). There are several farm or ranch buildings at this location.

The final site is yet another mile further west (twenty-two miles from US 160). Here there is a group of ranch buildings in a clump of trees. The Colorado-Utah border is only two miles west of the last described location.

Since McElmo was a rural post office it is quite possible that it had other locations along this stretch of the McElmo Canyon valley.

I have not found any reference to the origin of the name McElmo. The likely explanation is that it honors one of the early settlers in the region. Arizona was the name proposed for the post office but it was rejected as was the suggestion Acorn.

McELMO – Continued



Building ruins at the 1917 site of McElmo, Colorado
 Photograph by William H. Bauer August 23, 2004

Chronology of the Post Office

Dec 18 1891	----	Lot 4 Sec 4 T35N R19W 50 yards south of McElmo Creek Note "Arizona can not be approved." Also written in and crossed out "Acorn." (referring to proposed names) Proposed postmaster - Harrison Hill
Mar 11 1892		Established
Mar 11 1892		Hill, Harrison
Jan 18 1909		Bowen, Cord C.
Mar 15 1911		Discontinued
--- 190-	----	SW/4 Sec 31 T36N R19W McElmo Creek 800 feet south of post office
Mar 16 1912		Re-established
Mar 16 1912		Edmonson, George
Mar 2 1914		Ashbaugh, George J.
Dec 18 1915		Taylor, Leah M.
Nov 23 1917	----	SE/4 Sec 31 T36N R19W 1/8 mile north of McElmo Creek This is an indicated move east from a location similar to the 1923 location
Nov 28 1917		Fowler, Charles L.
Aug 23 1923	----	SW/4 Sec 36 T36N R20W 800 feet north of McElmo Creek
Sep 7 1923		Taylor, Mary L. Acting
Nov 7 1923		Taylor, Mary L. Appointed
Feb 19 1932		Ordered closed
Feb 29 1932		Discontinued Mail to Cortez

McELMO – Continued

Confirmed types of postal markings

- | | | |
|---|--------------------------------|--|
| 1 | MC ELMO. / COLO
CI 10P 33.0 | May 5 1917
4bars S-??x19mm, manuscript date |
| 2 | McELMO / COLO.
CI 10P 32.0 | Nov 12 1931 Feb 29 1932
4bars S-24x19mm Last day of post office |



MCPHEE

In 1924, the New Mexico Lumber Co. began operation in the vicinity of Dolores. They constructed the Dolores, Paradox, and Grand Junction Railroad (later the Colorado and Southwestern Railroad) from Dolores down the Dolores River and then up House Creek. A company town was created at the site of a new sawmill and named for the president of the company, William P. McPhee.

Construction of the mill began in March 1924 and by the end of September it was in operation. A school was built and the post office was established in the company offices. By 1927 McPhee is reported to have had a population of 1,500. The depression of the 1930's effected the operation and the company was reorganized as the Montezuma Lumber Company. Operations continued but at a reduced level and slowly the rails were pulled back to McPhee. On June 30, 1941 the mill burned. It was rebuilt on a smaller scale but another fire on January 19, 1948 destroyed that facility. That marked the end of McPhee. The land was cleared and reverted to farmland. Subsequently a reservoir was built on the Dolores River and the site of McPhee lies beneath the waters of McPhee Reservoir.

From Dolores, drive west and north towards the Anasazi Heritage Center. Go past that institution, and turn north onto McPhee Road. In about two miles this will take you to a parking and boat launch area on the edge of the reservoir where you will be looking over the drowned site of McPhee.

Chronology of the Post Office

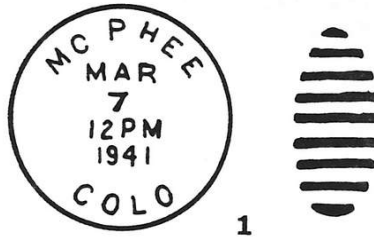
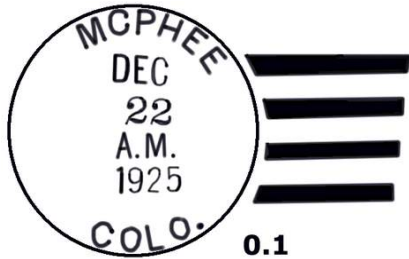
Jul 7 1924	---	NW/4 SE/4 Sec 31 T38N R15W 175 feet west of the track of the New Mexico Lumber Company Applicant for postmaster - C. H. Artz	
Sep 17 1924	Established		
Sep 17 1924	Artz, Charles W.		
Jul 9 1925	Arnn, Clyde		
Jul 1 1926			Office made Presidential
Jan 1 1927	Amick, Thomas		Acting
Dec 15 1927	Amick, Thomas		Appointed
Jul 1 1929			Office relegated
Sep 4 1929	Amick, Thomas		Appointed
Mar 13 1930	Smith, Frank J.		Acting
Jul 19 1930	Smith, Frank J.		Appointed & Confirmed
Aug 26 1930	Smith, Frank J.		Commissioned
Dec 31 1934	Daboll, Don		Assumed charge
Jan 16 1935	Daboll, Don		Acting
Jul 2 1935	Daboll, Don		Confirmed
Aug 15 1935	Daboll, Don		Commissioned

McPHEE – Continued

Sep 4 1940	Daboll, Mrs. Lois	Assumed charge
Sep 13 1940	Daboll, Mrs. Lois	Acting
Feb 20 1941	Daboll, Mrs. Lois	Confirmed
Mar 6 1941	Daboll, Mrs. Lois	Commissioned
Oct 23 1941	--- Sec 31 T38N R15W Dolores river 1/2 mile east of post office	
Jul 30 1942	Fogel, Mrs. Helen	Assumed charge
Aug 8 1942	Fogel, Mrs. Helen	Acting
Jun 14 1943	Fogel, Mrs. Helen	Confirmed
Jul 2 1943	Fogel, Mrs. Helen	Commissioned
Jan 27 1944	Biggs, Edgar H.	Assumed charge
May 25 1944	Biggs, Edgar H.	Acting
Jun 7 1944	Mack, Louis H.	Assumed charge
Oct 16 1944	Mack, Louis H.	Confirmed
Nov 18 1944	Mack, Louis H.	Commissioned
Jan 6 1948	Davis, Martin E.	Assumed charge
Mar 26 1948	Ordered closed	
Mar 31 1948	Discontinued Mail to Dolores	

Confirmed types of postal markings

0.1	MCPHEE / COLO. CI 10P 33.0	4-bar ???.x20.0	Dec 22 1925
1	Mc PHEE / COLO. CI 10P 29.0	Dplx Grid, 9 bar oval	Oct 3 1927 Dec 29 1941



MESA VERDE NATIONAL PARK

Mesa Verde National Park is the premier site for the famous Anasazi Cliff Dwellings. There are numerous examples in the canyons that dissect the mesa and many of these are easily accessible to tourists. This ready access is both a boon and a curse. It allows us to see these historic ruins but also threatens their existence from the wear and tear of a large number of visitors.

On September 9, 1874 John Moss guided Ernest Ingersoll and photographer William Henry Jackson to some small ruins in Mancos Canyon. This was the first, well-documented visit to the ruins. Over succeeding years The Wetherill family and others attempted to interest the Smithsonian Museum and the Peabody Museum in the area; unfortunately it was “pot hunters” that at first took the most interest in the ruins. Eventually the activities of knowledgeable preservationists led to the creation of Mesa Verde National Park on June 29, 1906.

Park Headquarters were established near the Spruce Tree House ruin where the only good water was to be found on the mesa.

The first road into the park was in use by 1914 but the completion in 1920 of the Inspiration Point Road opened the park to frequent visitation. And even though in places it is still steep and winding the road has been continually improved to meet modern needs.

The first post office was established at the park headquarters at Spruce Tree Camp and the first postmaster was the wife of the park superintendent.

MESA VERDE NATIONAL PARK – Continued

On September 25, 1934 Mesa Verde was honored with a 4-cent postage stamp as a part of the National Parks commemorative series.

Latitude = 37:14:00 North Longitude = 108:28:45 West

Chronology of the Post Office

May 13 1924	----	SW/4 SE/4 Sec 22 T34N R14W	
May 19 1924		Established	
May 19 1924		Nusbaum, Mary A.	
Jun 16 1928		Mair, Eva J.	Acting
Oct 24 1928		Mair, Eva J.	Appointed
May 1 1930		Pond, Mrs Eva	Possession
May 6 1930		Pond, Mrs. Eva	Acting
Aug 6 1930		Pond, Mrs. Eva	Appointed
Aug 22 1930		Pond, Mrs. Eva	Commissioned
May 5 1933		Wallace, Mrs. Thyra Dawson	Assumed charge
May 20 1933		Wallace, Mrs. Thyra Dawson	Acting
Feb 23 1934		Wallace, Mrs. Thyra Dawson	Confirmed
Mar 22 1934		Wallace, Mrs. Thyra Dawson	Commissioned
Oct 21 1941	----	SE/4 Sec 23 T34N R14W	Apparently in the Park Headquarters area
Oct 21 1942		Wade, Mrs. Kathleen M.	Acting
Oct 22 1942		Wade, Mrs. Kathleen M.	Assumed charge
Nov 3 1942		Wade, Mrs. Kathleen M.	Acting
Dec 1 1943		Wade, Mrs. Kathleen M.	Appointed & Confirmed
Jan 14 1943		Wade, Mrs. Kathleen M.	Commissioned
Jan 19 1943		Wade, Mrs. Kathleen M.	Assumed charge
Jul 1 1952			Office made Presidential
Apr 26 1968		Dillon, Richard H.	Acting
Nov 27 1971		Story, Orville F.	Appointed & Assumed charge
May 23 1979		Harland, Jackie D.	Officer in charge
Dec 15 1979		Harland, Jackie D.	Appointed

Confirmed types of postal markings

1	MESA VERDE NATIONAL PARK, / COLO. CI 10P 31.5	4bars S-25x14mm	Jul 15 1925 Jun 27 1932 July 15 or 13? Xerox not available
2	MESA VERDE NATIONAL PARK / COLO. CI 10P 33.0	4bars S-24x19mm	Sep 12 1934 Sep 25 1934
3	MESA VERDE NATIONAL PARK / COLO. CI 10P 20.0		Sep 25 1934 Mach First Day Of Issue, 4-cent National Park, Scott #743
4	MESA VERDE NATIONAL PARK, / COLO. CI 10P 38.0	4bars S-28x23mm	Aug 17 1935 May 18 1955
4.1	MESA VERDE NATIONAL PARK / COLO. CI 10P 35.0	4bars S-22x21mm	Aug 25 1936 May 13 1955
5	MESA VERDE NATIONAL PARK / COLO. CI 10P 34.0	4bars S-??x19mm	Mar 18 1939
6	MESA VERDE NATIONAL PARK / COLO. CI 10P 33.0	4bars S-25x19mm	Sep 15 1941 Oct 20 1942
7	MESA VERDE NATIONAL PARK / COLO. CI 10P 32.5	4bars S-23x19mm	Nov 14 1944 Jul 27 1953
7.1	MESA VERDE NATIONAL PARK / COLO. RC 10P 37.0x16.5	Hstp	1950s No killer, Parcel Post Box [NOT AVAILABLE FOR ILLUSTRATION]
8	MESA VERDE NATIONAL PARK / COLO. CI 10P 21.0	Mach 7 wavy lines	Jul 5 1957 Jul 21 1965

MESA VERDE NATIONAL PARK – Continued

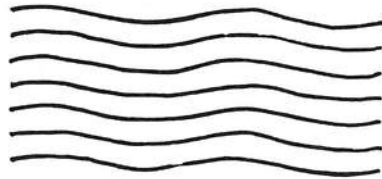
- 9 MESA VERDE NATIONAL PARK, CO / 81330 Jul 5 1967 May 1 1976
CI 10P 20.0 Mach 7 wavy lines
- 9.1 MESA VERDE NATIONAL PARK, CO 81330 Apr 29 1971
CI 11P 32.0/23.0 Rolr 6 slanted, wavy lines
[NOT AVAILABLE FOR ILLUSTRATION]
- 9.2 MESA VERDE NATIONAL PARK, CO 81330 Jun 12 1971 Oct 6 1971
CI 11P 32.0 4bars S-25x19mm
- 9.3 MESA VERDE NATIONAL PARK, CO / USPO Oct 6 1971
CI 11P 30.0/20.0 Hstp No killer
- 10 MESA VERDE NATIONAL PARK, CO / 81330 Mar 26 1975 Aug 15 1987
CI 10P 33.0 4bars S-24x20mm
- 11 MESA VERDE NATIONAL PARK, CO / 81330 Jan 19 2005
CI 10P 34.0 4bars S-21x16mm
[NOT AVAILABLE FOR ILLUSTRATION]



MESA VERDE NATIONAL PARK – Continued



9



9.2



9.3



10

MESA VERDE NATIONAL PARK STATION

Chronology of the Post Office

Sep 16 1984 Special Commemorative Station

Confirmed types of postal markings

- | | | |
|---|--|--|
| 1 | MESA VERDE NP / STATION / COLORADO 81330
IR 00R 90.0x51.0 | Sep 16 1984
Pict Scene - Mesa Verde scene; Text - WORLD CONFERENCE /
ON / CULTURAL PARKS |
|---|--|--|



USS MESA VERDE LPD-19 CHRISTENING STATION

Chronology of the Post Office

Jan 15 2005 Special Commemorative Station

USS MESA VERDE LPD-19 CHRISTENING STATION – Continued

Confirmed types of postal markings

- 1 MESA VERDE NATIONAL PARK / USS MESA VERDE LPD-19 / CHRISTENING STATION
Jan 15 2005

IR 00R 55.0x41.0

Pict Scene - silhouette of ship



1

MILDRED

At the turn of the twentieth century the Mildred Post Office served a farming area north of Cortez. It is doubtful that it was more than a ranch post office or that there was an organized community.

Fairview was the name originally proposed. That name was rejected to avoid confusion with a post office by that name in California, and Mildred was substituted. There is no information as to whom Mildred might have been.

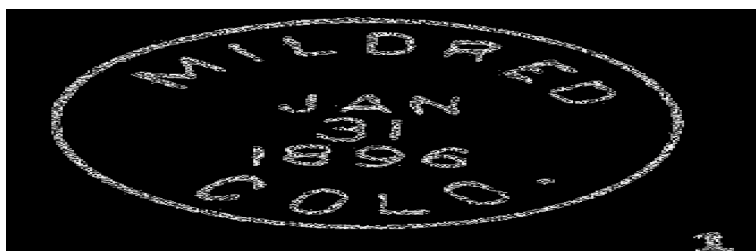
From Cortez drive north on Montezuma County Road 25 (Lebanon Road) to County Road P. Mildred was in the southeast corner of this intersection where there are a few older buildings with an occupied residence.

Chronology of the Post Office

- Jan 23 1895 ---- NE/4 NE/4 Sec 3 T36N R16W 1/4 mile west of Hartman Gulch
Note "Fairview is objectionable there being an office by that name in California. Substitute Mildred."
Proposed postmaster - Belle T. Lydon
- Mar 18 1895 Established
- Mar 18 1895 Lydon, Belle T.
- Jun 19 1895 Barratt, Belle T.
- May 16 1903 Ordered closed
- May 30 1903 Discontinued Papers to Cortez

Confirmed types of postal markings

- 1 MILDRED / COLO. Jan 31 1896
CI 10P 27.5 Hstp Target, 4-ring 18mm
- 2 MILDRED / COLO. Dec 26 1901
CI 10P 29.0 Hstp Cork, Negative X-roads



MILLARD

Millard was an early twentieth century post office on the eastside of the Dolores River a short distance downstream from the junction of the West Fork of the Dolores River. As with other places along the Dolores River, it was likely a ranch post office with a railroad siding or passing track, likely loading facilities for cattle raised in the valley of the West Fork.

Other names have been applied to this location: Raymond and Carter's. The post office name was Millard, the family name of the first postmaster, Maggie Millard.

Drive east from Dolores to the river junction. This is also where the road to Dunton departs from Colorado Highway 145.

Chronology of the Post Office

Jul 31 1907	---	SE/4 Sec 2 T38N R14W Rio Grande Southern 150 feet west of post office Dolores River 200 yards west and Cox Canon 1-1/4 (?) mile southwest of post office
Sep 17 1907		Established
Sep 17 1907		Millard, Maggie
Mar 7 1908		Janssen, Dirk J.
Jun 30 1909		Discontinued Mail to Quarry

Confirmed types of postal markings

1	MILLARD, / COLO.	Jun 17 1908 Aug 24 1908
	CI 10P 32.0	4bars S-24x14mm



MOQUI

Moqui was the other of two post offices that served farmers and ranchers in McElmo Canyon.

The site, from the Geographic Site Location Reports is about ten miles west of US 160, a short distance before McElmo Canyon Road crosses the creek from the south side to the north. In this area there are some abandoned buildings on the south side of the road and an occupied residence on the north side of the road. The Site Location Report for Moqui indicates that the office would be at Tozer's dwelling.

One site we considered is a guest ranch, Kelly's Place, which is on a side road near the creek. This ranch has been in existence for a long time and it would seem a logical place for the Moqui Post Office.

Like McElmo, Moqui was established to serve ranchers, farmers and visitors in this portion of McElmo Canyon.

The name Moqui is considered to be a synonym for Hopi. The choice of an Indian name for a post office in this area is appropriate as the area lies just north of the Ute Mountain Reservation.

Chronology of the Post Office

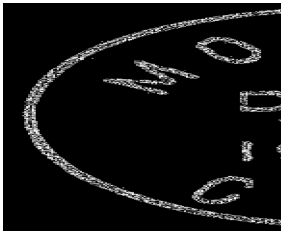
May 14 1900	----	NE/4 Sec 35 T36N R18W 200 yards south side of McElmo Creek Sketch map shows "Tozers dwelling" post office? Proposed postmaster - Alex J. Tozer
-------------	------	--

MOQUI – Continued

Jun 18 1900	Established
Jun 18 1900	Tozer, Alex J.
Apr 15 1914	Discontinued Mail to Cortez

Confirmed types of postal markings

1	MOQUI / COLO. CI 10P 28.0	Dec 30 1907	Hstp Not present
---	------------------------------	-------------	------------------

**MORGAN**

Morgan is another of the communities in Montezuma County for which I must rely on Ray Newburn's excellent work for information.

Ray attributes the settlement to Frank Morgan, a pioneer sawmill operator who established a mill to tap the rich timber resources of the Lost Canyon area. His mill was in operation in the late 1880's and ceased operation only a few months before the Rio Grande Southern Railroad came through Lost Canyon and over Millwood Summit on its way to Mancos and eventually Durango.

It appears that Morgan, undoubtedly named for Henry F. (Frank) Morgan the first and only postmaster, was little more than a camp for the mill workers.

The site of Morgan is about two miles south-southeast of the site of Arloa. To get there follow the directions to Arloa. However, the site of Morgan is on Colorado Highway 184, just east of County Road 36.1, the road to Arloa. There are some modern residences in this area but nothing that can be assigned to the time of Morgan.

Chronology of the Post Office

Aug 18 1887	----	NW/4 Sec 34 T37N R14W 1 mile south of Lost Canon Document is signed by George Bauer, postmaster, Mancos Proposed postmaster - Henry F. Morgan
Oct 24 1887		Established
Oct 24 1887		Morgan, Henry F.
May 4 1891		Discontinued

Confirmed types of postal markings

NO POSTAL MARKINGS HAVE BEEN REPORTED FROM MORGAN

NAVAHO SPRINGS

The USGS topographic map for Montezuma County (sheet 4) labels Navajo Springs at a point two and one half miles south of the road from US 160 in to Towaoc and a half-mile west of US 160. This area is part of Navajo Wash, a broad nearly level valley with very little sign of reliable water. There is a slightly greener spot at about the described location that could indicate the presence of the spring.

Ray Newburn, in *Postal History of the Colorado San Juan* gives an excellent review of the events that led to the establishment of Navajo Springs and later Towaoc.

NAVAHO SPRINGS – Continued

In 1895 farmland allotments were made to the Southern Utes. The Capote and Monache bands took land near Ignacio but the Weeminuche band refused to participate and moved to the part of the reservation in far southwestern Montezuma County, now known as the Ute Mountain Reservation. A sub-agency was established at Navajo Springs but a lack of water soon showed its inadequacy. Thus, the agency was moved north to its present location, Towaoc.

Newburn raises some question as to whether the agency and post office, were ever at the Navajo Spring [water source], but the initial Post Office Department Geographic Site Location Report for Towaoc and a subsequent report support a location first in the Navajo Spring area, and then in 1918, a move to present day Towaoc. The closure of the Navajo Springs Post Office coincides with the opening of the Towaoc Post Office.

Chronology of the Post Office

Oct 10 1910	---	Section not surveyed T33N R17W
Dec 24 1910		Established
Dec 24 1910		Clardy, U. L.
Feb 28 1912		Spear, John S.
Nov 7 1913		Noland Frank H.
Apr 1 1915		Discontinued Moved to Towaoc

Confirmed types of postal markings

- | | | | |
|---|--|-----------------|------------------------|
| 1 | NAVAHO SPRINGS, / COLO.
CI 10P 32.0 | 4bars S-24x15mm | Jan 13 1912 Jul 9 1912 |
| 2 | NAVAHO SPRINGS, / COLO.
CI 10P 32.0 | 4bars S-??x19mm | Mar 4 1916 May 16 191- |



PAYMASTER

Paymaster is one of the post offices in Colorado for which I have no information other than the record of the appointment of a postmaster for the place, supposedly in Montezuma County.

Since the appointment and post office establishment were rescinded it seems probable that the plans for a settlement came to naught and Paymaster existed only in the mind of the proposed postmaster and perhaps a couple other people.

Chronology of the Post Office

	No document was found in the Montezuma County Geographic Site Location Reports	
Mar 20 1900		Established
Mar 20 1900		Gallagher, William D.
Jun 20 1900		Establishment rescinded

Confirmed types of postal markings

NO POSTAL MARKINGS HAVE BEEN REPORTED FROM PAYMASTER

PLEASANT VIEW

Pleasant View came into being in the mid-1930's when the state road from Cortez to Dove Creek and on into Utah was improved. The road was also re-aligned and thus bypassed Ackmen. A new community was formed on the road and took the name Pleasant View for the "pleasant vistas" in the area.

The businesses and the post office at Ackmen soon moved to the new community. Pleasant View continues to serve as a small supply and community center for ranches and farms in northwestern Montezuma County and southwestern Dolores County.

The original Geographical Site Location Report leads me to think that the name Pleasant View was that of a pre-existing school at the chosen location.

Pleasant View is on US Highway 491, three miles south of the Montezuma-Dolores County line and is about 17 miles northwest of Cortez.

Latitude = 37:35:22 North Longitude = 108:45:52 West

Chronology of the Post Office

Feb 23 1939	----	SW/4 Sec 31 T39N R17W "Town has no name, School Pleasant View"	
		Applicant for postmaster - Blanche P. King	
Jun 23 1939		Established	
Jun 23 1939		King, Mrs. Blanche P.	Appointed
Jul 10 1939		King, Mrs. Blanche P.	Commissioned
Jul 20 1939		King, Mrs. Blanche P.	Possession
Feb 14 1940	----	SW/4 Sec 31 T39N R17W Ackmen 6500 feet southeasterly	
		Applicant for postmaster - Blanche P. King	
Oct 22 1941	----	SE/4 SW/4 Sec 31 T39N R17W On US Highway 160	
Feb 5 1943		Denton, James C.	Possession, Acting
Feb 27 1943		Denton, James C.	Acting
Jun 13 1944		Denton, James C.	Appointed
Jul 11 1944		Denton, James C.	Commissioned
Jul 31 1944		Denton, James C.	Possession
Jan 9 1946		Wright, Mrs. Nell Jeanne	Possession & Acting
Apr 14 1947		Wright, Mrs. Nell Jeanne	Appointed
May 14 1947		Wright, Mrs. Nell Jeanne	Commissioned
Jun 30 1947		Wright, Mrs. Nell Jeanne	Possession
Feb 25 1977		Marsell, Mrs. Karen	Officer in charge
Aug 12 1978		Marsell, Mrs. Karen L.	Appointed

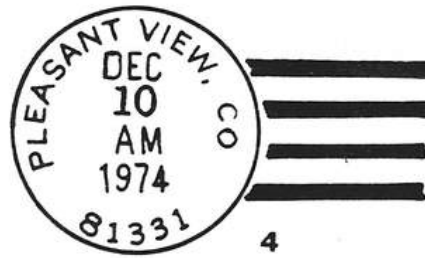
Confirmed types of postal markings

1	PLEASANT VIEW / COLO. CI 10P 32.0	4bars S-23x19mm	Jul 22 1939 Apr 30 1951
2	PLEASANT VIEW / COLO. CI 10P 34.0	4bars S-24x20mm	Jan 30 1960 Dec 6 1962
3	PLEASANT VIEW, CO / 81331 CI 10P 39.0	4bars S-28x23mm	Aug 18 1967
3.1	PLEASANT VIEW, CO / 81331 CI 10P 33.5	4bars S-25x21mm	Sep 18 1968
4	PLEASANT VIEW, CO / 81331 CI 10P 32.0	4bars S-24x19mm	Jan 7 1969 Feb 5 1986
5	PLEASANT VIEW, CO / 81331 CI 10P 32.0	4bars S-25x19mm	Mar 23 1993 Sep 26 1994

PLEASANT VIEW – Continued



3.1



4



5

POINT LOOKOUT

Point Lookout was not an organized community. It grew as a small cluster of tourist cabins and related businesses on US Highway 160 at the junction with the access road to Mesa Verde National Park. At first the establishment was known as Hallar's Camp. The post office was likely in one of the businesses or perhaps a small outbuilding.

The name refers to a somewhat elevated location on the highway with a view of the mesas to the south and the mountains to the north.

There is no longer a post office at Point Lookout but tourists can still find services there.

Latitude = 37:18:57 North Longitude = 108:25:05 West

Chronology of the Post Office

Nov 7 1938	----	Center of SE/4 Sec 29 T36N R14W Also known as Hallar's Camp Applicant for postmaster - Vida H. Mallett	
Apr 22 1939		Established	
Apr 22 1939		Mallett, Mrs. Vida H.	Confirmed
Jun 19 1939		Mallett, Mrs. Vida H.	Commissioned
Jul 3 1939		Mallett, Mrs. Vida H.	Assumed charge
Oct 20 1941	----	SE/4 Sec 29 T36N R14W US 160 is 35 feet southwest of post office	
Jun 4 1946		Sherwood, Mrs. Patricia A.	Assumed charge
Dec 26 1946		Sherwood, Mrs. Patricia A.	Confirmed
Jan 29 1947		Sherwood, Mrs. Patricia A.	Commissioned
Feb 15 1948		Wilson, Mrs. Ann E.	Assumed charge
May 17 1948		Wilson, Mrs. Ann E.	Confirmed
Jun 15 1948		Wilson, Mrs. Ann E.	Commissioned
Apr 19 1949		Wilson, Stanley W.	Assumed charge
Jun 8 1949		Wilson, Stanley W.	Acting
Jun 15 1949		Wilson, Stanley W.	Confirmed
Aug 5 1949		Wilson, Stanley W.	Appointment rescinded
Aug 8 1949		Graham, Harry E.	Assumed charge
Aug 19 1949		Graham, Harry E.	Acting
Oct 14 1949		Graham, Harry E.	Confirmed

POINT LOOKOUT – Continued

Dec 2 1949	Graham, Harry E.	Commissioned
May 24 1951	Ordered closed	
Jun 30 1951	Discontinued Mail to Mancos	

Confirmed types of postal markings

1	POINT LOOKOUT / COLO. CI 10P 31.5	4bars S-23x18mm	Jul 3 1939 Jun 30 1951
---	--------------------------------------	-----------------	------------------------



QUARRY

Quarry was the name of a small post office on the east fork of the Dolores River. Apparently the quarry was large enough to warrant the Rio Grande Southern Railroad constructing a siding for the loading of cars. The spur or siding, was named Red Rock. There may have been a small community that in 1900 had a population of 20.

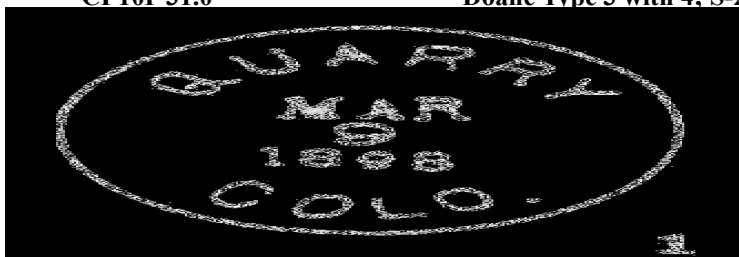
According to the Geographic Site Location Report, when Quarry was established it was three-quarters of a mile north (east) of Taylor Creek (see Hynes) and 200 yards north of the Dolores River. At that location, on the north side of the highway and in the trees, are the remnants of an old log cabin. There are also the remains of what could have been a quarry, now largely filled by alluvium. There is room between the highway and the river for the railroad siding and other buildings.

Chronology of the Post Office

May 28 1892 ----	NW/4 Sec 12 T38N R13W 200 yards north of the Dolores River 3/4 mile north of Taylor Creek 200 feet south of Rio Grande Southern Proposed postmaster - Wilson Sinclair
Jun 30 1892	Established
Jun 30 1892	Sinclair, Wilson
Jul 28 1898	Zedaker, Idona A.
Aug 31 1899	Trumble, Angeline
Dec 15 1900	Sullivan, George F.
Jun 7 1909	Bartlett, Frances R.
Apr 30 1912	Discontinued Mail to Dolores

Confirmed types of postal markings

1	QUARRY / COLO. CI 10P 27.0	Hstp Not present	Mar 9 1898
2	QUARRY. / COLO. CI 10P 31.0	Doane Type 3 with 4; S-23x14mm	Dec 28 1905 Jul 23 1911



RENARAYE

Renaraye was yet another ranch post office west of US Highway 491 in northwestern Montezuma County. The area is rather elevated and not well irrigated and would seem best suited to ranching not farming.

The name Renaraye is most unusual. However, since the postmaster's name was Rena Cook, it seems that it was a combination of her name with that of another member of her family.

From US Highway 491 drive west on Montezuma County Road P about five and one-half miles. On the crest of a low ridge there are several abandoned buildings. Most have collapsed but in the fall of 1994 a couple were still standing, in disrepair. There is also a small cemetery about a half-mile east of the buildings.

Chronology of the Post Office

Feb 27 1915 --- SE/4 Sec 33 T37N R17W 4-1/2 miles west of Alkali Creek
Applicant for postmaster - Rena Cook
Jul 10 1915 Established
Jul 10 1915 Cook, Rena
Jan 15 1929 Discontinued Mail to Cortez



RENARAYE / COLO. December 7, 1925
Addressed to: Mr. Clyde Black, Renaraye, Colo.

Confirmed types of postal markings

- | | | | |
|---|----------------------------------|-----------------|------------------------|
| 1 | RENARAYE, / COLO.
CI 10P 32.0 | 4bars S-24X20mm | Mar 10 1917 |
| 2 | RENARAYE / COLO.
CI 10P 31.0 | 4bars S-23X14mm | Mar 10 1923 Jan 5 1929 |

RENARAYE – Continued



RUIN CANYON

Ruin Canyon was a small agricultural settlement located just east of the head of the canyon of that name and a short distance north of Hovenweep Canyon. The area is dry land farming and was mainly settled in the early twentieth century.

The name Ruin Canyon refers to the numerous Anasazi Indian ruins in the area and the site is near the group known as the Lowry Indian Ruins.

To reach the site, drive west six miles on Road BB from Ackmen (on US 491) to the intersection with Road 10. Ruin Canyon was on the north side of Road BB and east of Road 16. In 1994 there was still a building and a clump of trees a half mile east of Road 10 and on the north side of Road BB. From the name Ruin Canyon, you might expect to find ruins and canyons but in the immediate area there is only gently rolling farmland - alfalfa and beans.

Chronology of the Post Office

Apr 24 1920	---	SW/4 Sec 5 T38N R18W Four miles east of Cross Canyon Original request was for Sylvan Applicant for postmaster - Georgia Mable Rose
Sep 3 1920		Established
Sep 3 1920		Rose, Georgia M.
Jul 12 1928		Ordered closed
Jul 31 1928		Discontinued Mail to Ackmen

Confirmed types of postal markings

NO POSTAL MARKINGS HAVE BEEN REPORTED FROM RUIN CANYON

SPARGO

Spargo was another small dry-land agricultural settlement in the northwestern corner of Montezuma County. Like its near neighbor Ruin Canyon, it was established in the 1920's during the homestead boom in this area.

Ray Newburn, in his *Postal History of the San Juans*, speculates that Spargo was named for A. J. C. Spargo, a fruit grower in the area of Mancos or for a member of his family. The name is unusual and there is no other known possible connection. The big question is why did the Post Office Department agree to the existence of two rural post offices within less than two miles at the same time? Both began in 1920 but Ruin Canyon lasted four years longer than Spargo. Perhaps someone finally recognized the situation.

To reach Spargo follow the directions to the Ruin Canyon site. Then continue west another mile from Road 10 to Road 9. Turn north one mile to the site of Spargo. Spargo was on the west side of this road. Maps indicate the presence of a small cemetery, marked by a row of pine trees. Nothing else remains. From Spargo drive east six miles on Road CC to Pleasant View on US 491.

SPARGO – Continued

Chronology of the Post Office

Sep 8 1920 ---- NE/4 Sec 1 T38N R19W 2-1/2 miles north of Ruin Canyon Creek
Applicant for postmaster - Jesse A. Glore
It appears that the post offices in this area all began at about the same time,
part of the development of agriculture in the area.

Nov 17 1920 Established
Nov 17 1920 Glore, Jesse A. [SRM: Appts of Postmasters differs from proposed Postmaster above]
Feb 12 1924 Ordered closed February 27 1924
Feb 29 1924 Discontinued Mail to Ruin Canyon

Confirmed types of postal markings

NO POSTAL MARKINGS HAVE BEEN REPORTED FROM SPARGO

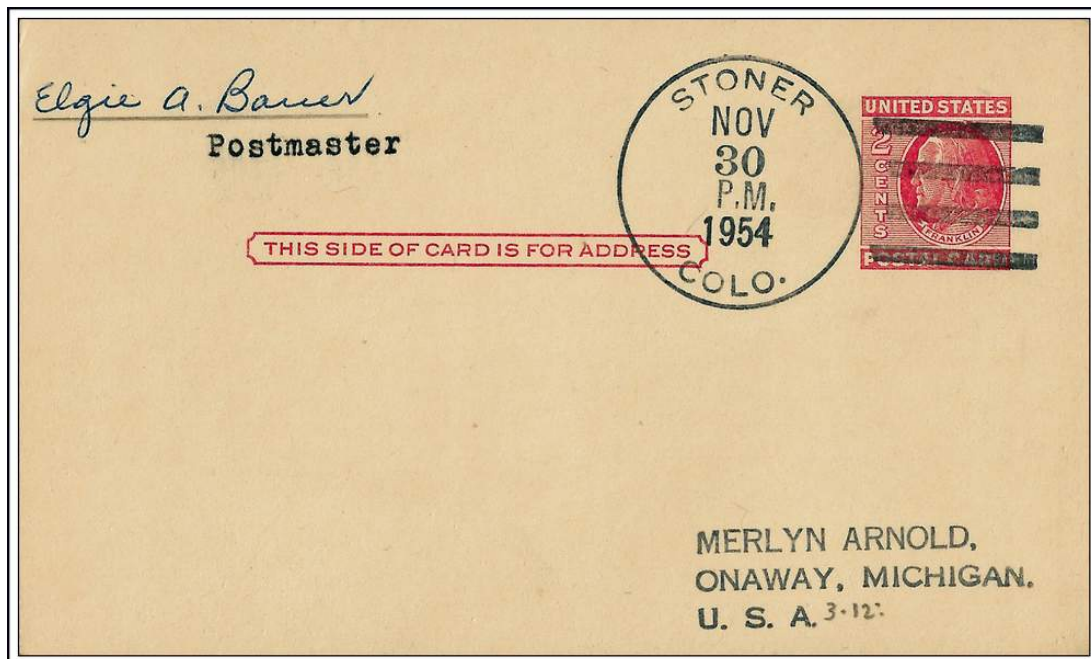
STONER

Throughout most of its existence Stoner has been known as a fishing resort and minor supply center for the Dolores River Valley in the stretch between Dolores and Rico. It continues to serve that function with several guest cabins and a store. The post office has been closed for nearly a half century.

The Rio Grande Southern Railroad had a section house and water tank near Stoner. The name of the community is taken from Stoner Creek, which flows to the west of the resort and joins the Dolores River at this point.

Stoner is on Colorado Highway 145, fourteen to fifteen miles east of Dolores.

Latitude = 37:35:22 North Longitude = 108:19:10 West



STONER / COLO. November 30, 1954 Last Day cover signed by Postmaster Elgie A. Bauer

Chronology of the Post Office

Apr 5 1913 ---- From: Sec 32 T39N R13W To: SW/4 Sec 32 T39N R13W
150 feet from the Rio Grande Southern RR

Apr 4 1917 Established

STONER - Continued

Feb 12 1917	----	NE/4 Sec 32 T39N R13W Original request was Stoner Creek, Creek crossed out. Post office 200 feet southwest of the Dolores River and 500 feet west of Stoner Creek	
Apr 4 1917		Knoblach, Albert	
Sep 4 1923		Williams, Tom R.	Confirmed
Oct 5 1923		Williams, Tom R.	Commissioned
Oct 13 1923		Williams, Tom R.	Assumed charge
Oct 21 1941	----	Sec 32 T39N R13W Dolores River 50 yards south of the post office	
Jan 22 1946		Camp, Mrs. Carrie I.	Assumed charge
Jan 3 1947		Camp, Mrs. Carrie I.	Confirmed
Jan 17 1947		Camp, Mrs. Carrie I.	Commissioned
Jul 21 1951		Black, Herbert W.	Assumed charge
Aug 22 1951		Black, Herbert W.	Acting
Dec 17 1951		Black, Herbert W.	Confirmed
Jun 10 1952		Black, Herbert W.	Commissioned
Nov 19 1952		Bauer, Mrs. Elgie A.	Assumed charge
Dec 10 1952		Bauer, Mrs. Elgie A.	Acting
Feb 19 1953		Bauer, Mrs. Elgie A.	Confirmed
May 1 1953		Bauer, Mrs. Elgie A.	Commissioned
Nov 3 1954		Ordered closed	
Nov 30 1954		Discontinued Mail to Dolores	

Confirmed types of postal markings

1	STONER, / COLO. CI 10P 33.0	4bars S-??x20mm	Feb 7 1920 Apr 14 1922
1.1	STONER, / COLO. CI 10P 32.5	4bars S-26x21mm?	Feb -- 1930
2	STONER / COLO. CI 10P 33.0	4bars S-24x20mm	Nov 1 1936 Sep 23 1940
3	STONER / COLO. CI 10P 32.0	4bars S-24x18mm	Mar 25 1942 Nov 30 1954
4	STONER / COLO. CI 11P 29.0/18.0	Hstp No killer	Nov 30 1954



TOLTEC

Toltec was located at or near Mitchell Springs about two miles south of the city of Cortez. The Mitchells had settled here in 1884 and gave their name to the springs. Water from the springs supplied the early settlers of Cortez until a canal was completed.

The Harris brothers moved to the springs from Mancos and opened a store but in a couple of years they moved on to Dolores. The Mitchells then opened a store and acquired a post office that was named Toltec. The Toltecs were predecessors of the Aztecs and it was to them that construction of the cliff dwellings was first attributed.

Starting on the large curve in US Highway 160 as it enters Cortez, drive south to about one mile south of McElmo Creek, then turn east for another mile. Toltec was in this area but there is nothing there that could be dated to the short period of its existence.

Chronology of the Post Office

Jan 5 1887	----	NE/4 Sec 2 T35N R16W
		Proposed postmaster - Bernard J. Byrne
Jan 26 1887		Established
Jan 26 1887		Byrne, Bernard J.
Feb 19 1887		Roher, William N.
Nov 21 1887		Discontinued Papers to Cortez

Confirmed types of postal markings

NO POSTAL MARKINGS HAVE BEEN REPORTED FROM TOLTEC

TOWAOC

Towaoc is the headquarters of the Ute Mountain Reservation. The settlement consists of the agency buildings, a hospital, the Ute Mountain School and a store, in addition to a number of residences. The Ute Mountain Reservation is also the location of a gambling casino on US Highway 160 which runs to the east of Towaoc.

The first post office to serve the reservation was at Navajo Springs. This was not the most hospitable of locations and thus a new agency was constructed for the reservation. It is reported that the contract for the new agency was let in 1916 but it was not completed until 1920. Thus it would appear that Towaoc was in existence prior to the commencement of construction. The Post Office Department Geographic Site Location Reports seem to confirm this supposition as a 1918 report indicates the move to the present location took place in that year. The previous location was about three miles south of the entrance road to Towaoc, west of US 160. See the discussion of Navajo Springs for more information.

In September 1994 Jim Ozment and I visited Towaoc in search of the post office. It was on a Sunday and there was very little activity. We drove south from Cortez on US 160 and then turned towards Towaoc, which is about two miles west of US 160. Next came the search for the post office. We spent considerable time driving around looking for it and found no sign to direct us to the post office. Eventually we spotted a safe setting outside a door in one of the agency buildings. Closer inspection disclosed that the door was the one to the Post Office. Apparently the Indians are not kindly disposed towards any government agency.

The derivation of the name Towaoc is questionable. It can best be attributed as a slight corruption of an Ute Indian word or words, whose closest translation is "all right." This is said to be a reference to the Utes approval of the new site for the agency that would serve them.

Latitude = 37:12:16 North Longitude = 108:43:44 West

TOWAOC – Continued

Chronology of the Post Office

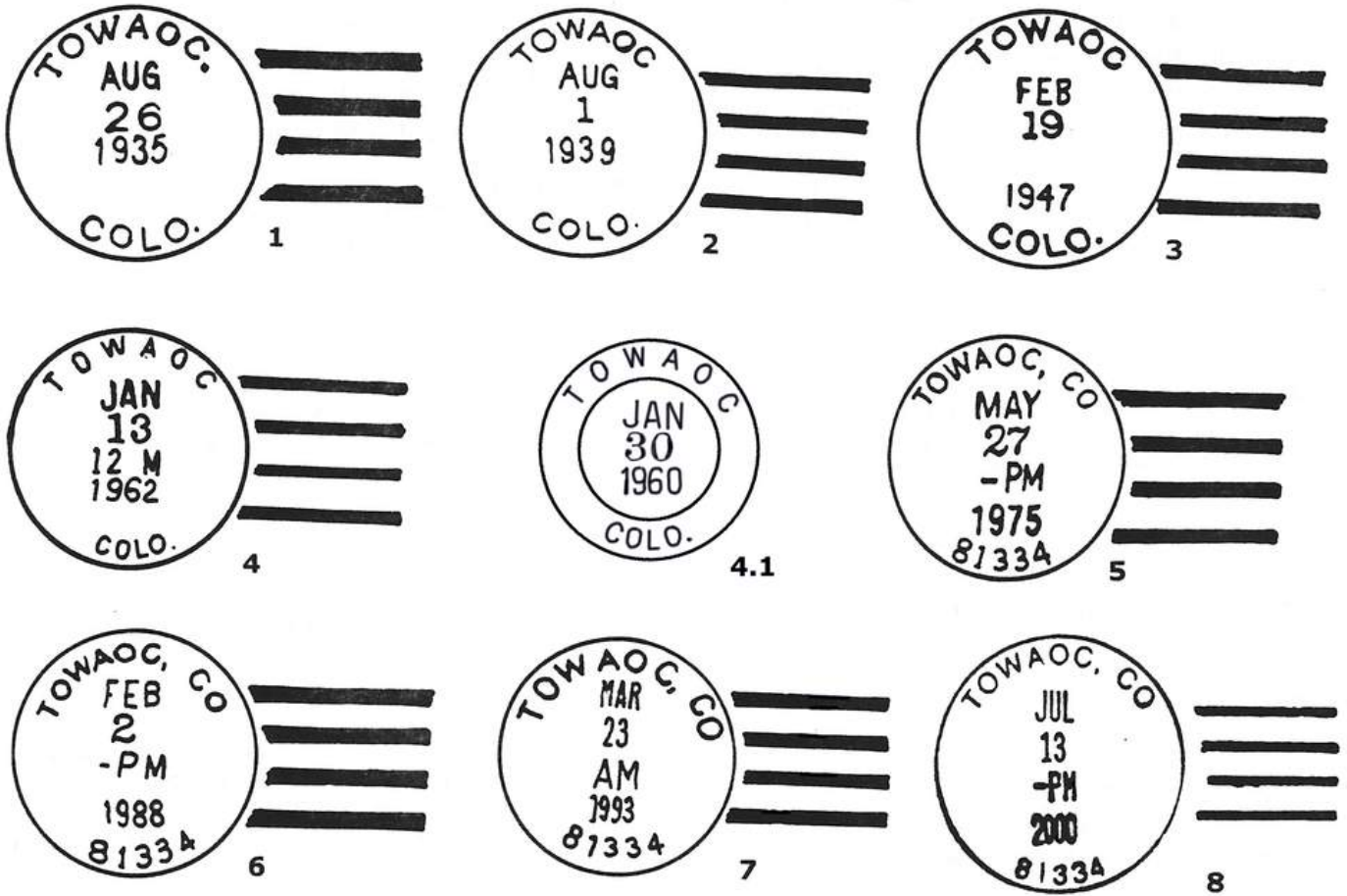
Jul 30 1914	----	Unsurveyed Sec 27 T34N R17W From the sketch map, there appears to be a "hitch" in the layout of the sections, so this could match the location also shown in the 1918 document.	
Apr 1 1915		Established Moved from Navaho Springs	
Apr 1 1915		Noland, Frank H.	
Aug 25 1917		Crawford, Estella	
Mar 30 1918	----	SE/4 Sec 7 T34N R17W This was a move from the SW/4 NW/4 Sec 28 T34N R17W	
May 5 1919		Richardson, Caroline	
Jun 8 1920		Crawford, Rachel	
Nov 19 1921		Haberman, Louis	Acting
Aug 19 1922		Haberman, Louis	Appointed
Mar 9 1923		Russell, James	
May 14 1923		Reed, Theodore E.	Acting
Jul 27 1923		Reed, Theodore E.	Appointed
Jan 5 1924		Schiffere, Peter P.	Acting
Jun 15 1924		Schiffere, Peter P.	Appointed
Sep 9 1924		Schiffere, Peter P.	Commissioned
May 12 1934		Helms, Werner	Assumed charge
May 22 1934		Helms, Werner	Acting
Dec 14 1934		Helms, Werner	Confirmed
Jan 21 1935		Helms, Werner	Commissioned
Apr 1 1941		Griswold, Francis H.	Assumed charge
Apr 9 1941		Griswold, Francis H.	Acting
Aug 27 1941		Griswold, Francis H.	Confirmed
Sep 22 1941		Griswold, Francis H.	Commissioned
Oct 23 1941	----	SE/4 Sec 7 T34N R17W	
Jun 15 1948		Pyle, Byron W.	Commissioned
Jul 31 1948		Pyle, Byron W.	Possessionm
Nov 18 1942		Griswold, Mrs. Elsa M.	Appointed
Dec 8 1942		Griswold, Mrs. Elsa M.	Commissioned
Dec 18 1942		Griswold, Mrs. Elsa M.	Possession
Jan 6 1948		Pyle, Byron W.	Possession, Acting
Jan 27 1948		Pyle, Byron W.	Acting
May 17 1948		Pyle, Byron W.	Appointed
Dec 23 1977		House, Marilyn	Officer in charge
Jul 28 1978		Whitmer, Allan L.	Officer in charge
Oct 7 1978		Whitmer, Allan L.	Appointed

Confirmed types of postal markings

1	TOWAOC, / COLO. CI 10P 32.0	4bars S-24x19mm	Feb 15 1930 Dec 20 1937
2	TOWAOC / COLO. CI 10P 33.0	4bars S-??x18mm, letters close spaced	Aug 1 1939 Mar 23 1944
3	TOWAOC / COLO. CI 10P 33.0	4bars S-22x20mm	May 24 1944 May 2 1952
4	TOWAOC / COLO. CI 10P 32.0	4bars S-24x19mm, letters wide spaced	Apr 14 1959 Mar 4 1964
4.1	TOWAOC / COLO. CI 11P 29.5/19.0	Hstp No killer	Jan 30 1960
5	TOWAOC, CO / 81334 CI 10P 32.0	4bars S-24x19mm	May 27 1975 Jul 9 1969
6	TOWAOC, CO / 81334 CI 10P 33.0	4bars S-23x20mm	Feb 2 1988

TOWAOC – Continued

- | | | | |
|---|-----------------------------------|-----------------|-------------|
| 7 | TOWAOC, CO / 81334
CI 10P 31.0 | 4bars S-22x17mm | Mar 23 1993 |
| 8 | TOWAOC, CO / 81334
CI 10P 34.0 | 4bars S-20x15mm | Jul 13 2000 |



FOUR CORNERS STATION

Chronology of the Post Office

- | | |
|-------------|---|
| Jul 12 2000 | Special Commemorative Station
Note: On July 12, 2000, this same style device was also used at Shiprock, NM, Montezuma Creek, UT and Teec Nos Pos, AZ |
|-------------|---|

Confirmed types of postal markings

- | | | |
|---|---|--|
| 1 | TOWAOC, CO 81334 // FOUR CORNERS STATION
CI 10P 26.0 | Jul 12 2000
Pict Scene - Indian lance pointing to the right |
|---|---|--|



WESTFORK

Westfork was located at the junction of the West Fork of the Dolores River with the main branch of the Dolores River. At this point there is an open area and an active ranch in the forks of the river. A number of ranch buildings are still present.

This location may also have been the site of Raymond, a railroad siding and passing track. It is likely that there was a stockyard for loading of cattle from ranches in the West Fork Valley.

The post office at Westfork lasted only a few years and was followed in the area by the Millard Post Office. Since the location of Millard is somewhat questionable, it is possible that Millard was in the same area as Westfork.

To reach the site from Dolores, drive east on Colorado Highway 145 about thirteen miles to the river forks, where the road to Dunton goes north. There is a private road that loops through the ranch complex in the forks.

Chronology of the Post Office

Jan 24 1903	----	SW/4 Sec 36 T39N R14W 15 feet north of the Dolores River 1-1/2 miles west of Stoner Creek 160 rods north of the Rio Grande Southern Proposed postmaster - Edwin H. Elmer
Apr 18 1903		Established
Apr 18 1903		Elmer, Edwin H.
Sep 6 1904		Elmer, Minta
Mar 13 1905		Ordered closed
Mar 31 1905		Discontinued Mail to Quarry
Mar 7 1907		Re-established
Mar 7 1907		Cunningham, M. S.
Apr 20 1907		Establishment rescinded

Confirmed types of postal markings

NO POSTAL MARKINGS HAVE BEEN REPORTED FROM WESTFORK

YELLOW JACKET

Yellow Jacket was a small community on US Highway 491 about halfway between Lewis and Pleasant View. It was centered on a combination general store and post office. The store now operates intermittently, if at all, but the post office was still in operation in September 1994. There are a few residences near the post office. The store served as a supply point for farms and ranches in this area of Montezuma County.

The initial settlement, about 1912, was in an area where there were some good springs that could provide water for the residents but it was primarily a dry-farming area.

The first location of the Yellow Jacket Post Office was three miles west and one mile south of the location on US 491. There are no remnants at that position.

The name of the post office comes from the nearby Yellow Jacket Canyon, so named because there were abundant yellow jacket nests on the canyon walls.

Latitude = 37:32:04 North Longitude = 108:43:00 West

Chronology of the Post Office

Oct 10 1913	----	SE/4 Sec 30 T38N R17W Applicant for postmaster - Albert Knobloch
May 5 1914		Established
May 5 1914		Marrriott, Charles M.
Sep 1 1914	----	SW/4 Sec 30 T38N R17W

YELLOW JACKET – Continued

Feb 24 1915	----	SW/4 Sec 22 T38N R17W Known as "Bainter's Corner Store." signed by postmaster Mrs Matie L. Bainter	
Mar 12 1915		Bainter, Matie L.	
Feb 18 1918		Schaaf, George E.	
Apr 29 1930		Schaaf, Mrs. Wilhelminia	Acting
May 24 1930		Schaaf, Mrs. Wilhelminia	Appointed
Jun 11 1930		Schaaf, Mrs. Wilhelminia	Commissioned
Oct 22 1941	----	SW/4 Sec 22 T38N R17W	
Mar 31 1945		Schaaf, Mrs. Ethel May	Possession, Acting
May 4 1945		Schaaf, Mrs. Ethel May	Acting
May 31 1945		Mahaffey, Charles Don	Possession, Acting
Jul 12 1945		Mahaffey, Charles Don	Acting
Sep 14 1945		Mahaffey, Charles Don	Appointed
Nov 2 1945		Mahaffey, Charles Don	Commissioned
Nov 30 1945		Mahaffey, Charles Don	Possession
Jun 3 1946		Wilson, Emory Blake	Possession, Acting
Jun 25 1946		Wilson, Emory Blake	Acting
Dec 26 1946		Wilson, Emory Blake	Appointed
Jan 27 1947		Wilson, Emory Blake	Commissioned
Mar 31 1947		Wilson, Emory Blake	Possession
Jan 14 1950		Weir, James V.	Possession, Acting
Jan 30 1950		Weir, James V.	Acting
Feb 16 1950		Weir, James V.	Appointed
Mar 3 1950		Weir, James V.	Commissioned
Mar 31 1950		Weir, James V.	Possession
Oct 31 1969		Weir, Mrs. Lessie Mae	Officer in charge
Jul 31 1971		Weir, Mrs. Lessie Mae	Appointed
Jul 31 1971		Weir, Mrs. Lessie Mae	Commissioned & Possession

Confirmed types of postal markings

1	YELLOW JACKET. / COLO. CI 10P 32.0	4bars S-??x20mm	Jul 20 1916 Jun 29 192-
2	YELLOW JACKET / COLO. CI 10P 32.0	4bars S-24x20mm	Feb 11 1927 Oct 8 1936
3	YELLOW JACKET / COLO. CI 10P 32.0	4bars S-23x19mm	May 1 1937 Jun 8 1949
4	YELLOW JACKET, / COLO. CI 11P 29.0/19.0	Hstp No killer	Apr 23 1945 Sep 7 1945
5	YELLOW JACKET / COLO. CI 10P 33.0	4bars S-24x19mm	Dec 31 1947 Dec 6 1962
5.1	YELLOW JACKET, CO / 81335 CI 10P 33.0	4bars S-25x21mm	Oct 27 1967
6	YELLOW JACKET, CO / 81335 CI 10P 31.0	4bars S-25x18mm	Dec 19 1970 May 29 1990
7	YELLOW JACKET, CO / 81335 CI 10P 32.0	4bars S-24x19mm	Apr 7 1993 Aug 6 1999
8	YELLOWJACKET CO / 81335 CI 10P 33.0	4bars S-12x22mm	May 6 2002



YELLOW JACKET - Continued



4



5



5.1



6



7



8

BIBLIOGRAPHY – MONTEZUMA COUNTY

REFERENCES – BOOKS

- BEEBE, Lucius & CLEGG, Charles *Narrow Gauge in the Rockies*; 1958; Howell-North; Berkeley, California; 224pp; illus.; map
- BENSON, Maxine *1001 Colorado Place Names*; 1994; University Press of Kansas; Lawrence, Kansas; 237pp; sketches
- BRIGHT, William *Colorado Place Names*; 1993; Johnson Books; Boulder, Colorado; 162pp
- CROFUTT, George A. *Croffutt's Gripsack Guide of Colorado*, 1885; Overland Publishing Co.; Omaha, Nebraska; Reprint: Cubar Associates; 1966; Golden, Colorado; 266pp; illus.; maps
- DAWSON, J. Frank *Place Names in Colorado*; 1954; J. Frank Dawson Publishing Co.; Denver, Colorado; 52pp
- EBERHART, Perry *Guide to the Colorado Ghost Towns and Mining Camps*; 1968; fourth, revised edition; Swallow Press; Chicago, Illinois; 496 pp; illus.

REFERENCES – COLORADO MAGAZINE

- CLARK, Ruth S. *The Founding of Dolores*, April 1928, Vol. 5, No. 2, pp60-63
- MARTIN, Paul S. *The 1928 Archeological Expedition of the State Historical Society of Colorado*, January 1929, Vol. 6, No. 1, pp1-35, illus, map
- SMITH, Duane A. *A Land unto Itself: The Western Slope*, Spring-Summer 1978, Vol. 55, No. 2-3, pp 81-204, illus.
- TAYLOR, Fred as told to Anna Florence Robinson *Pioneering in Southwestern Colorado*, July 1935, Vol. 12, No. 4, pp147-157
- Place Names in Colorado* [Alternate Title: *The Names of Colorado Towns*]
Prepared by the Colorado Writers Project; *Colorado Magazine*; Serialized in Volumes 17-20

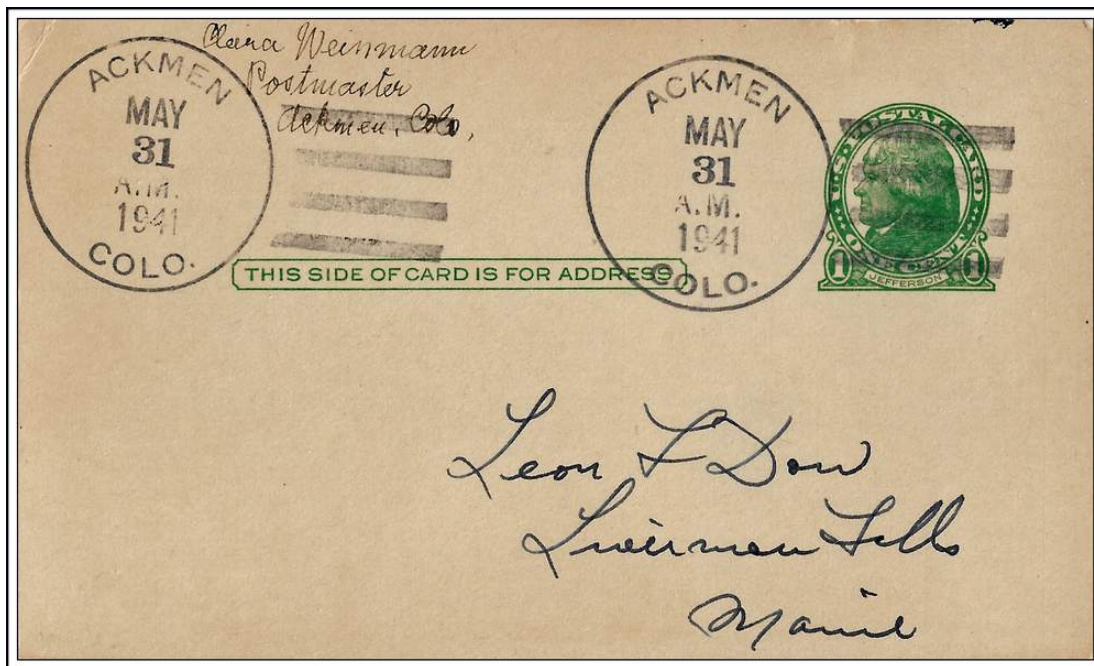
REFERENCES – WESTERN EXPRESS JOURNAL

- NEWBURN, Ray L., Jr. *Postal History of the Colorado San Juan*; Western Express, serialized
- Chapter IX - Montezuma County, Part 1 - January 1980
 - Montezuma County, Part 2 - April 1980
 - Montezuma County, Part 3 - July 1980

GEOGRAPHIC SITE LOCATION REPORTS OF THE POST OFFICE DEPARTMENT

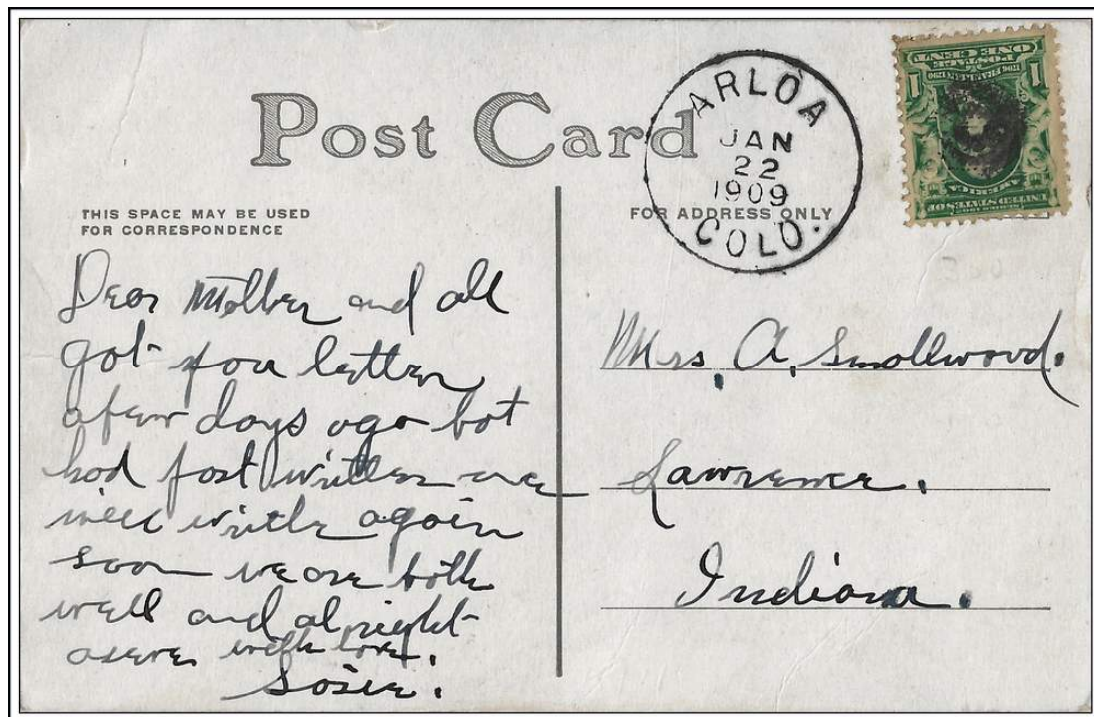
These are documents filed with applications for the approval of a new post office, at the time of a move of a post office and upon periodic requests of the Post Office Department. The documents may include a detailed location using the Federal Land Survey System, reference of distance to local streams and rivers, to railroads and to nearby existing post offices.

A GALLERY OF MONTEZUMA COUNTY COVERS



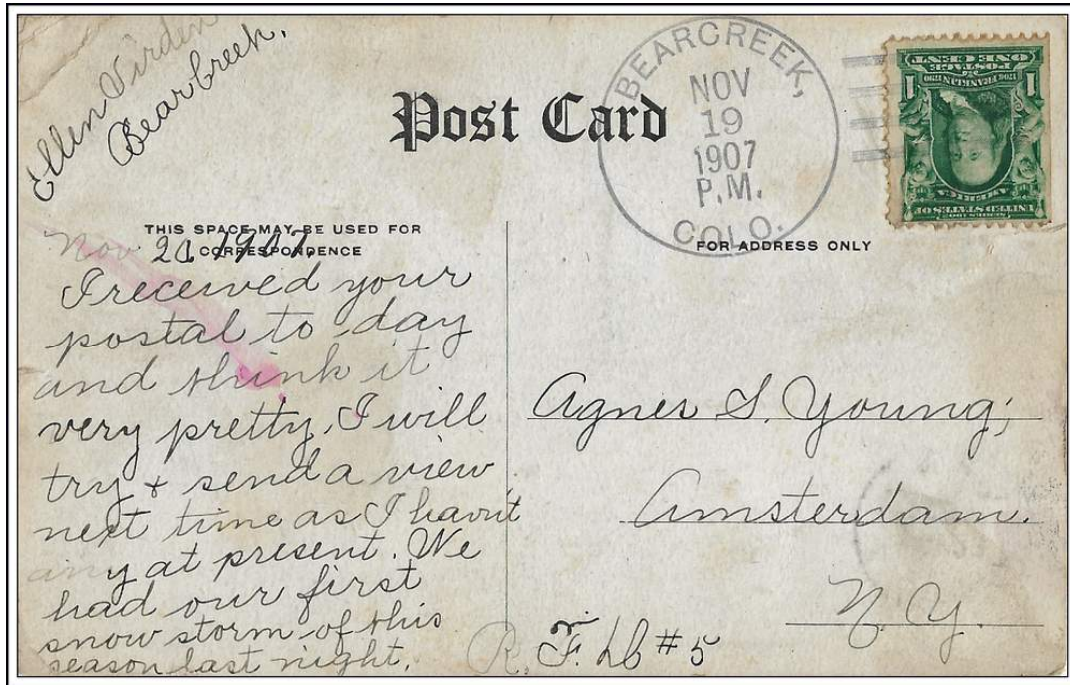
ACKMEN / COLO.

May 31, 1941



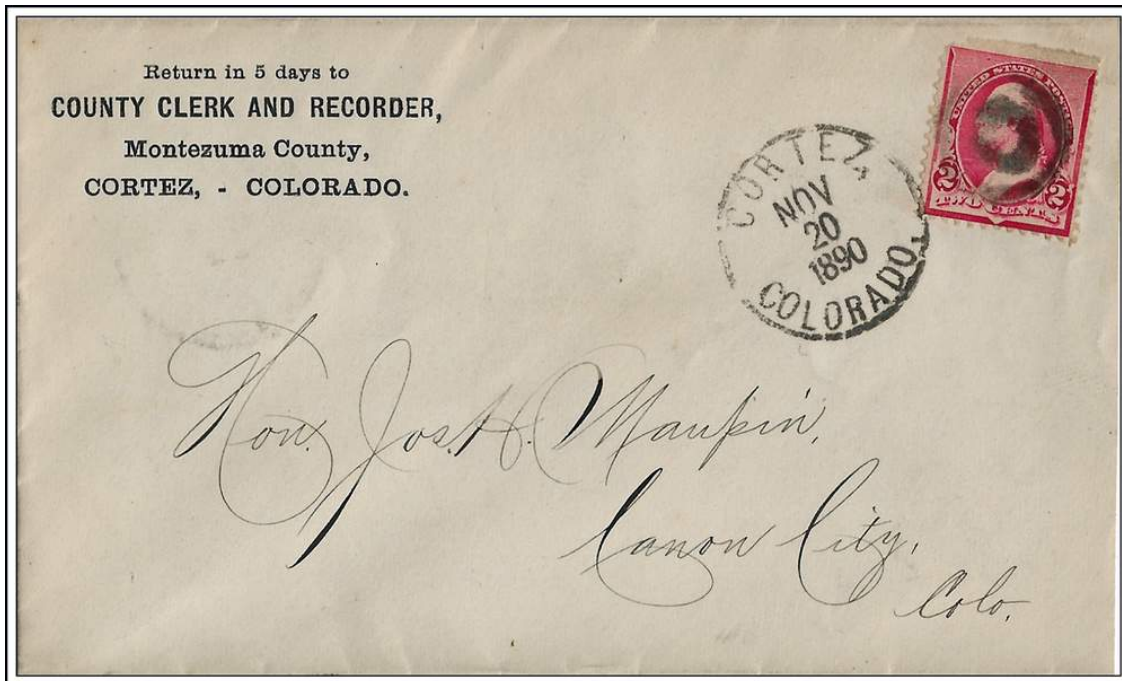
ARLOA / COLO.

January 22, 1909



BEARCREEK, / COLO.

November 19, 1907



CORTEZ, / COLORADO.

November 20, 1890



CORTEZ, COLO.

May 17, 1949



DOLORES / COLO.

November 15, 1887

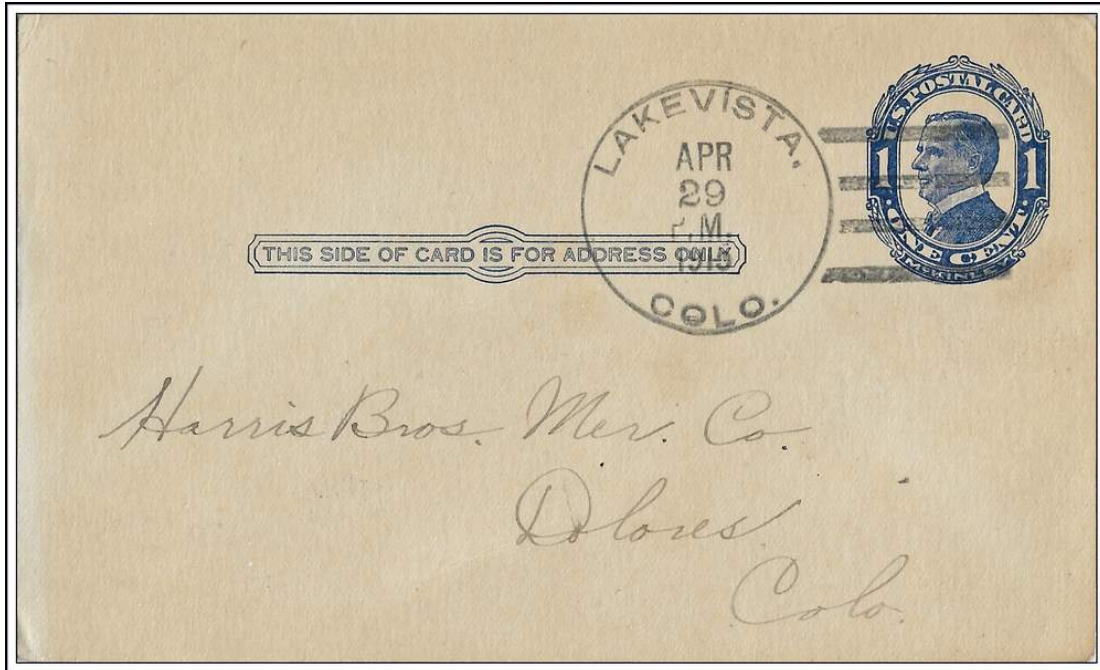


DOLORES. COLO. / WM. M. MAY, P.M. July 26, 1881



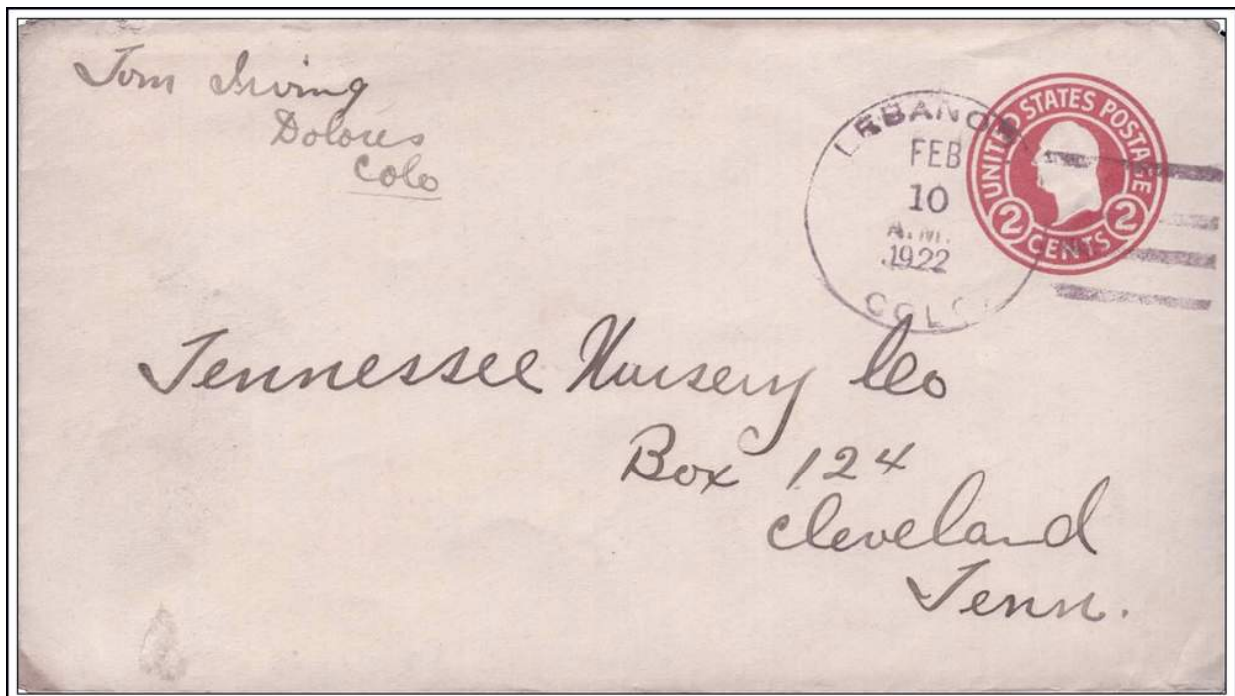
HOGG / COLO.

January 13, 1904



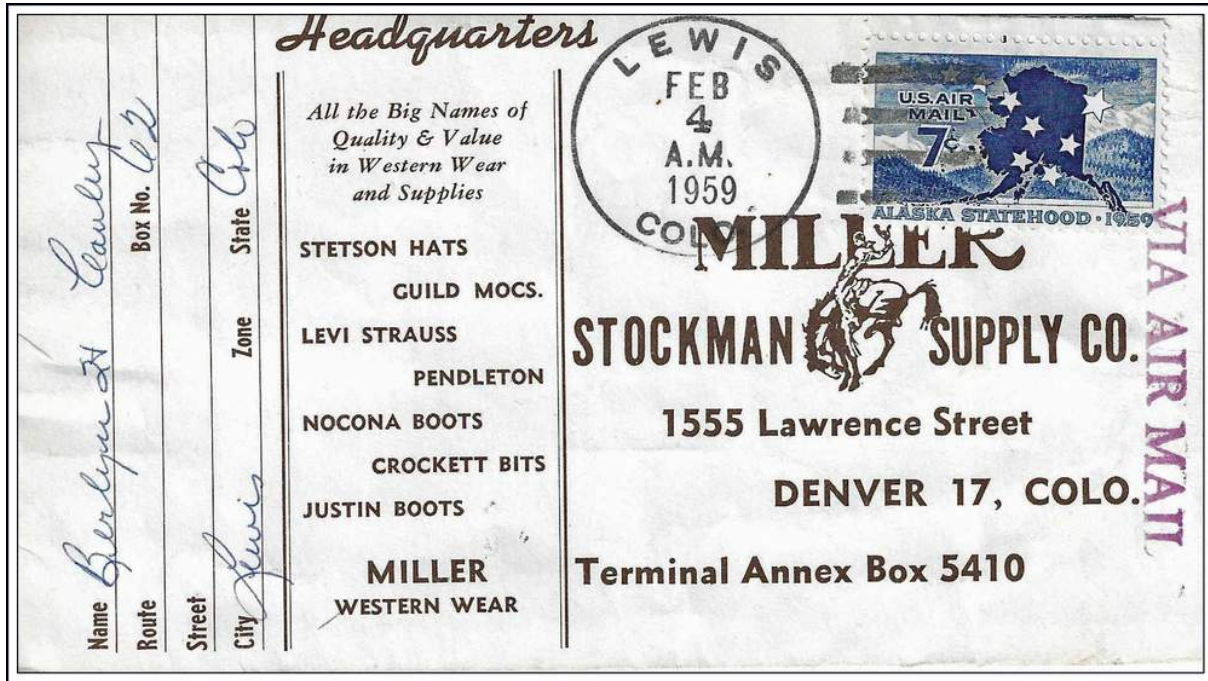
LAKEVISTA, / COLO.

April 29, 1915



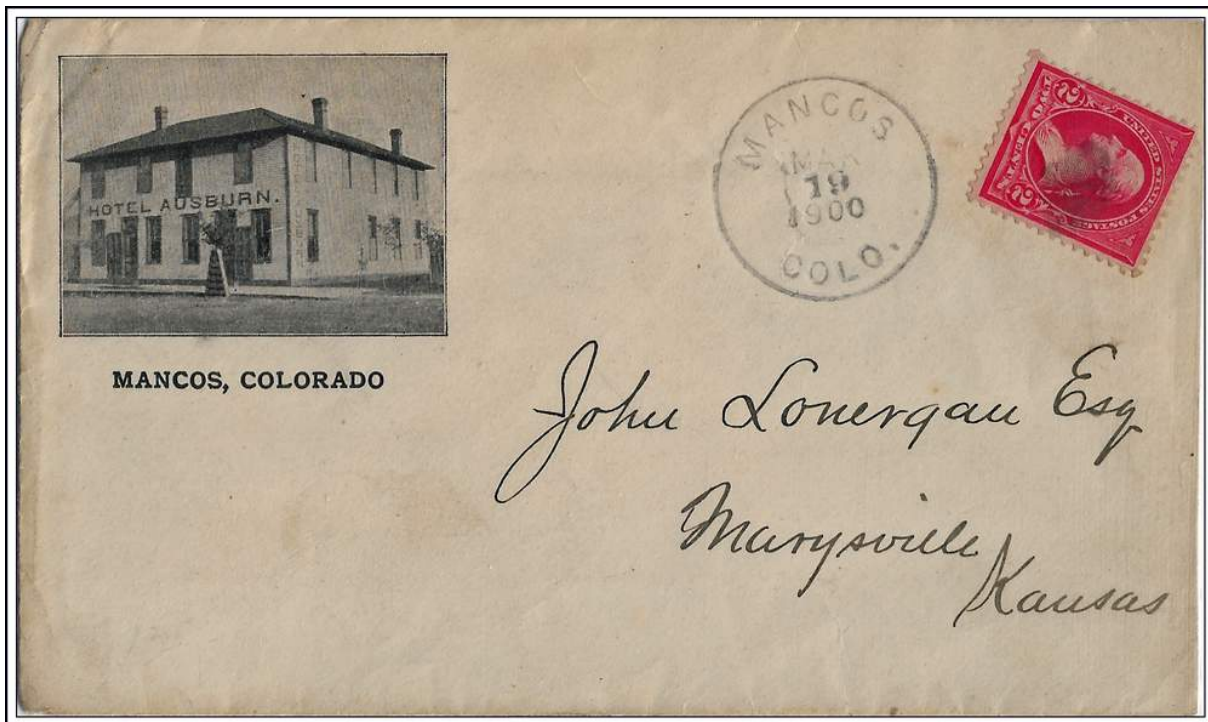
LEBANON, / COLO.

February 10, 1922



LEWIS / COLO.

February 4, 1959



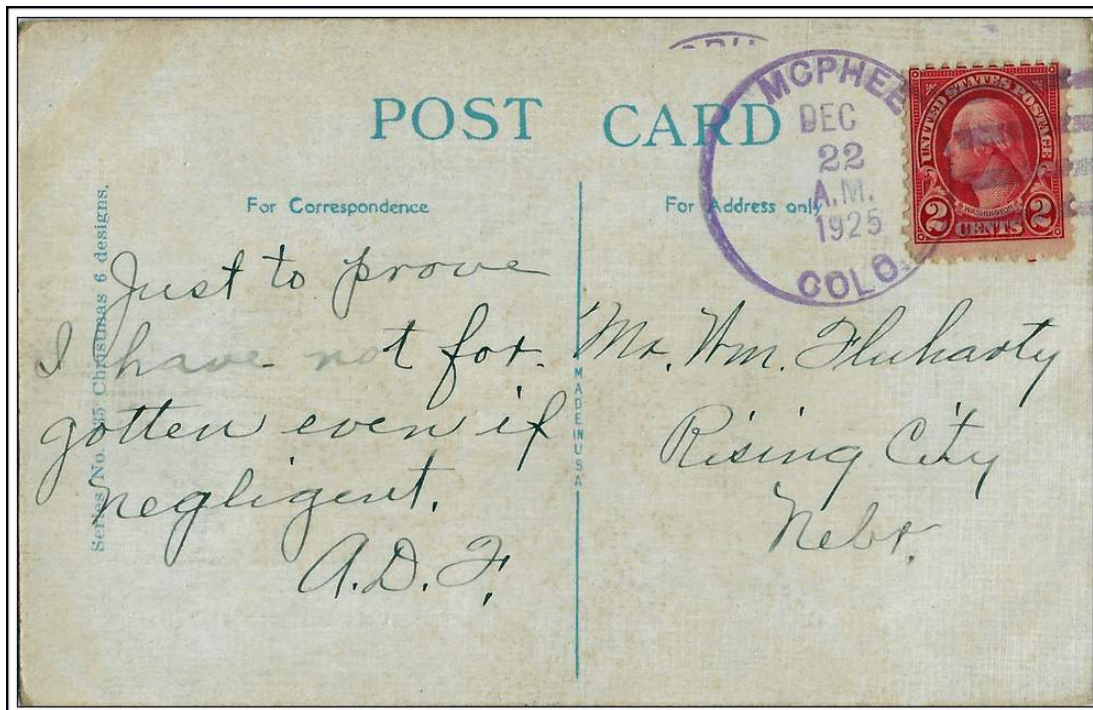
MANCOS / COLO.

March 19, 1900



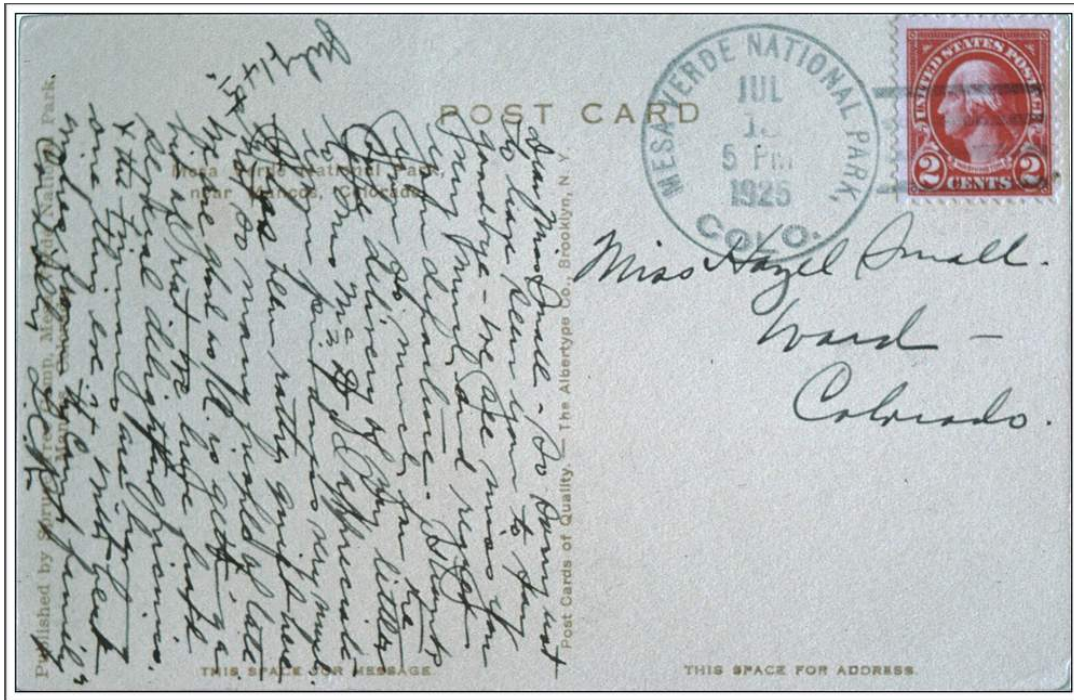
MANCOS / COLO.

July 24, 1903

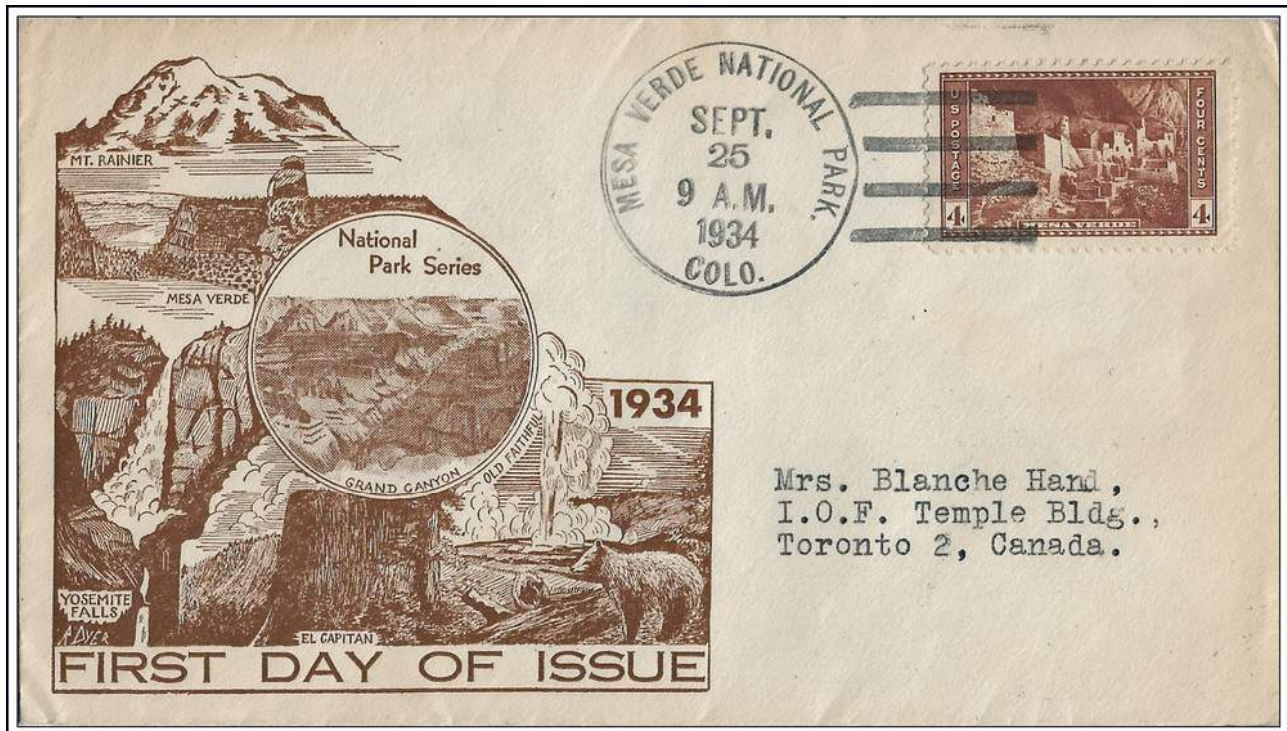


MCPHEE / COLO.

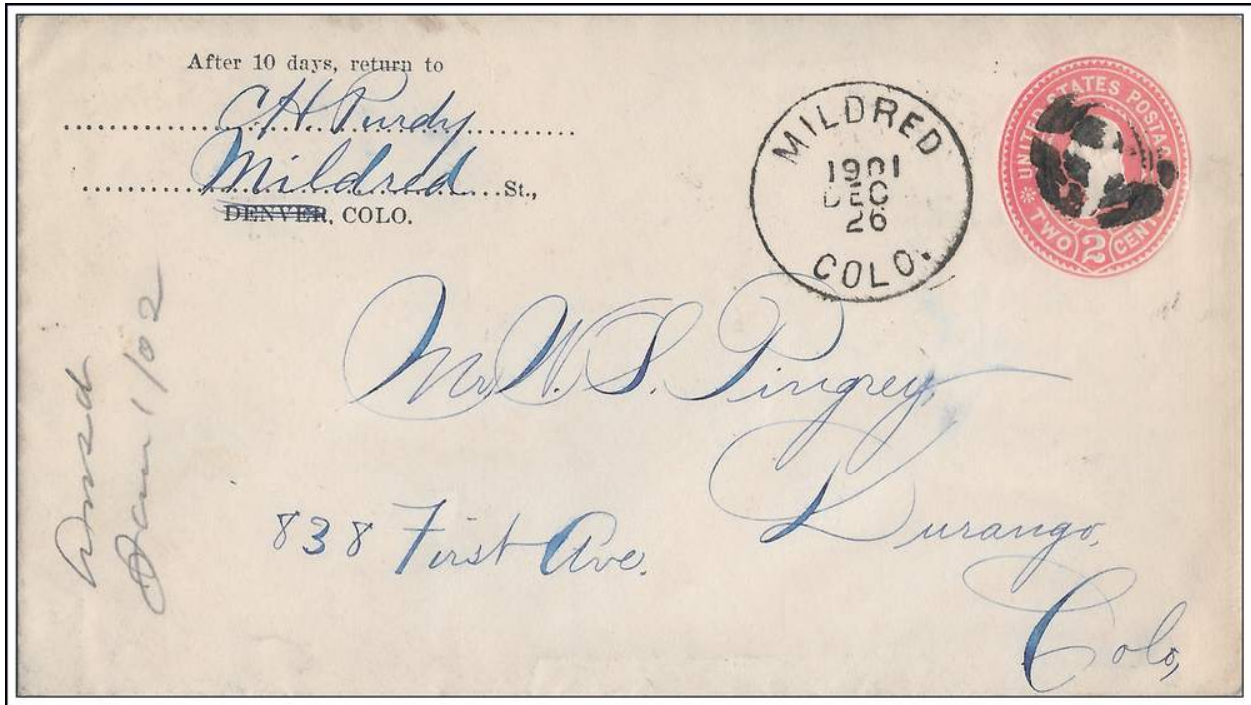
December 22, 1925



MESA VERDE NATIONAL PARK, / COLO. July 15, 1925

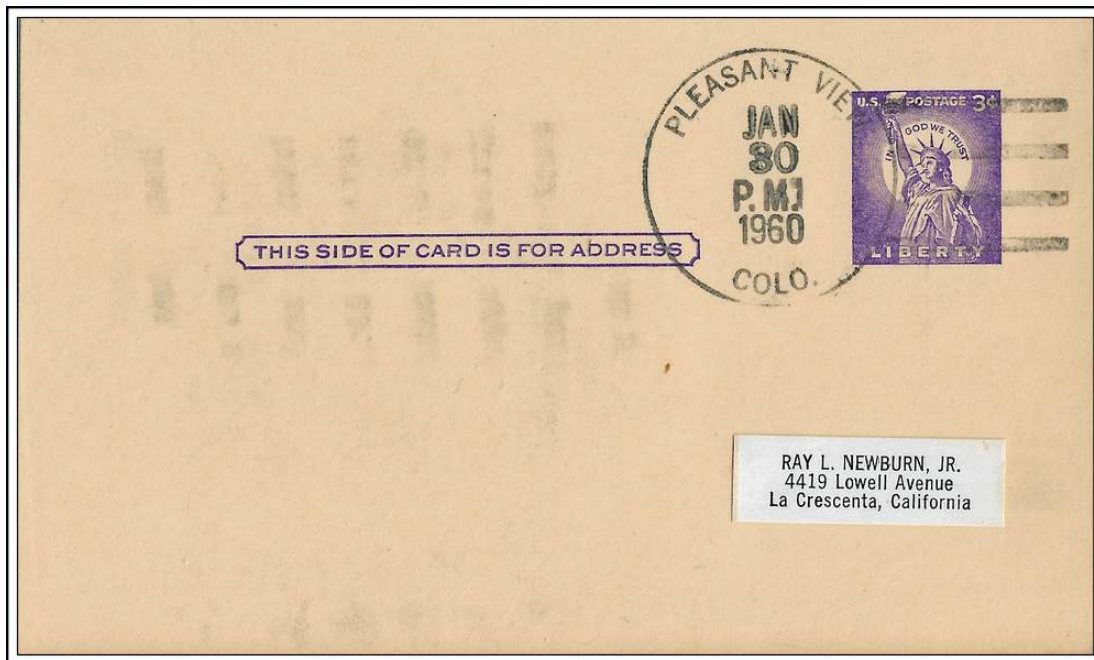


MESA VERDE NATIONAL PARK, / COLO. September 25, 1934
First Day of Issue of the 4-Cents National Parks stamp



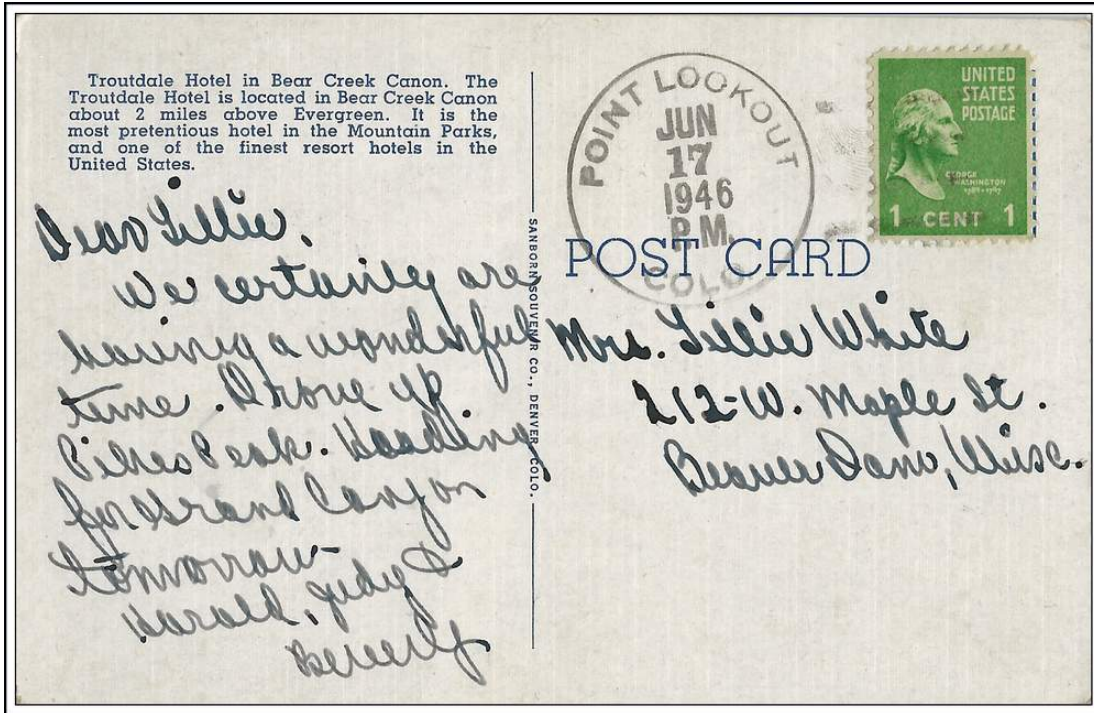
MILDRED / COLO.

December 26, 1901



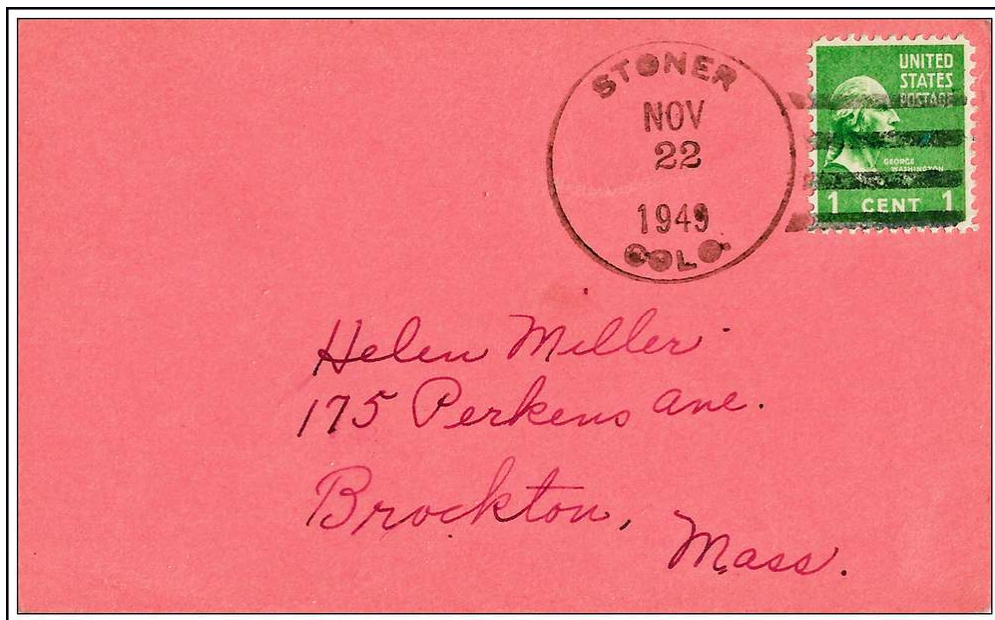
PLEASANT VIEW / COLO.

January 30, 1960



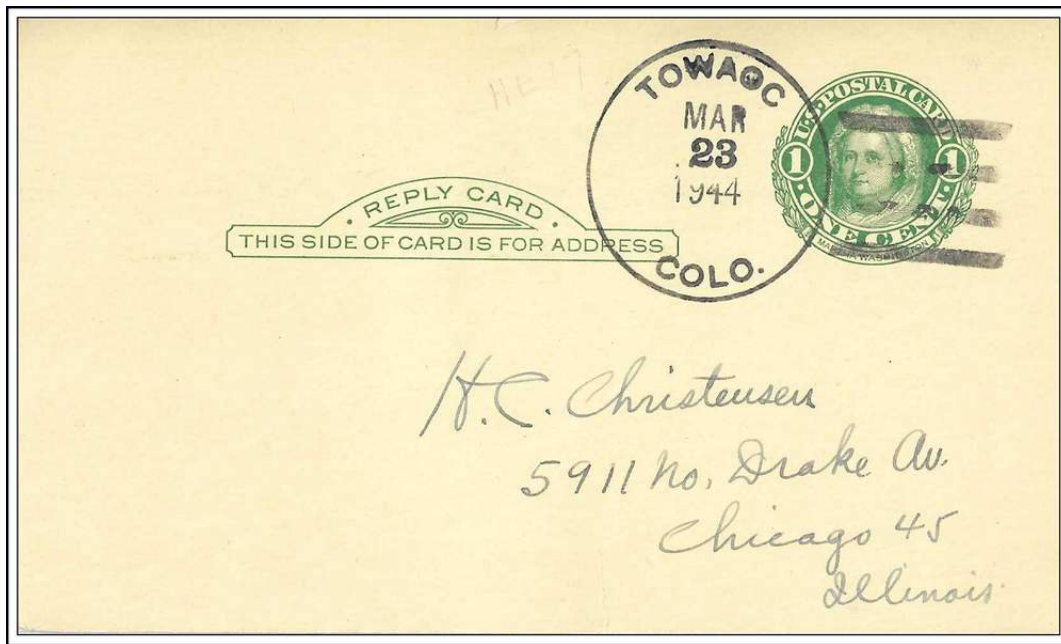
POINT LOOKOUT / COLO.

June 17, 1946



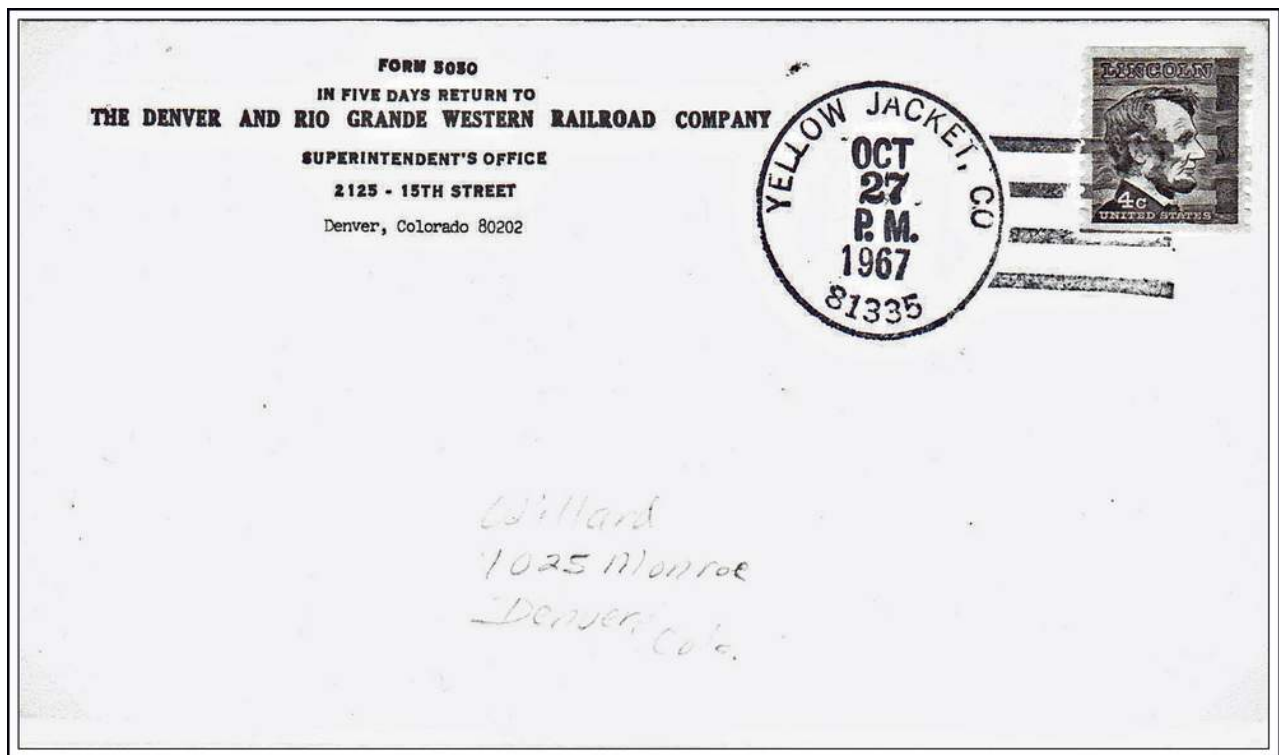
STONER / COLO.

November 22, 1945



TOWAOC / COLO.

March 23, 1944



YELLOW JACKET, CO / 81335

October 27, 1967