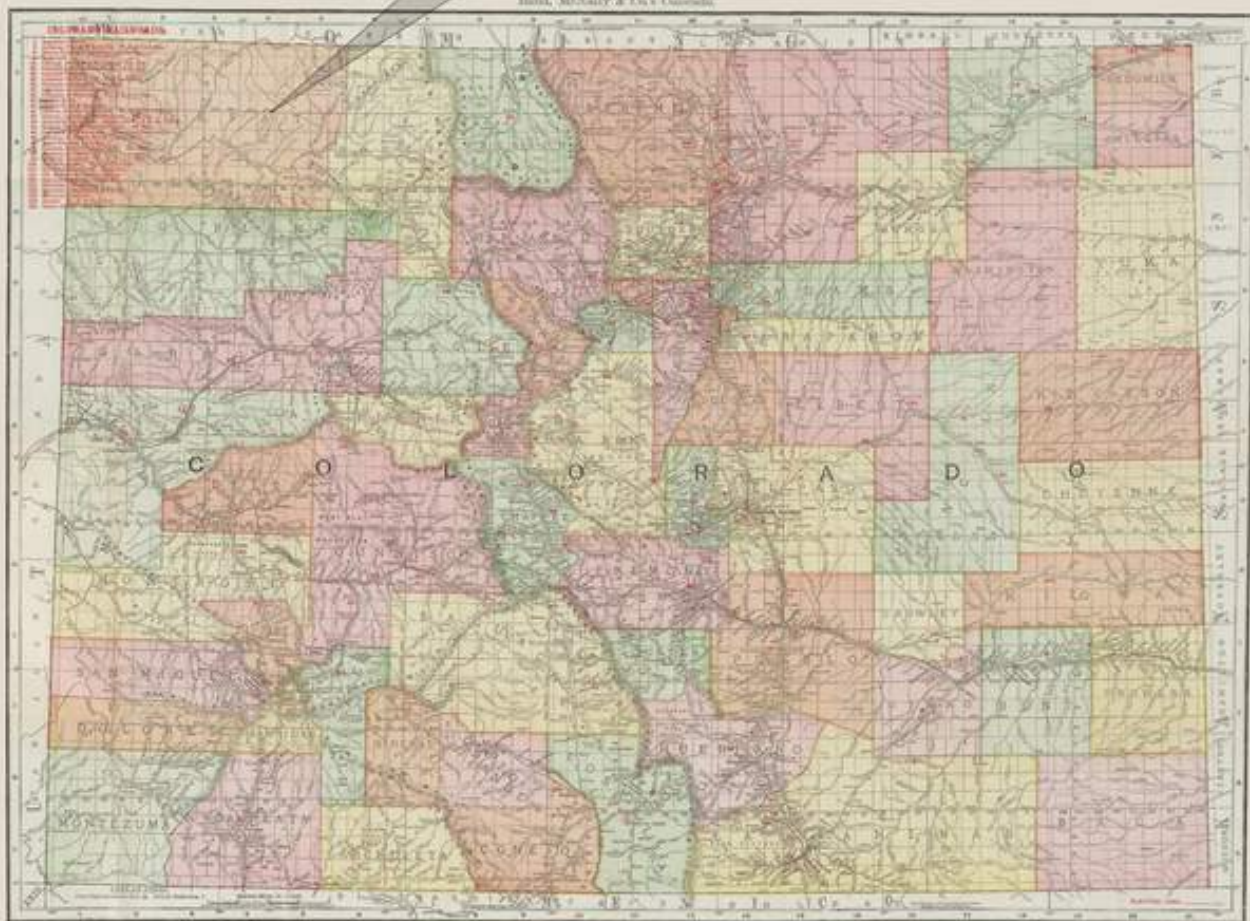


Moffat County



Map courtesy of <http://www.davidrumsey.com>

Established: February 27, 1911

County Seat: Craig



MOFFAT COUNTY

By William H. Bauer

Moffat County was one of the last counties to be created in Colorado. It was carved from Routt County on February 27, 1911 with Craig as its county seat. The county occupies the northwestern corner of the state and with the exception of the eastern boundary is rectangular in shape, approximately 85 miles east-west by 60 miles north-south. Moffat County is bounded on the north by Wyoming, on the west by Utah, on the south by Rio Blanco County and on the east by Routt County.

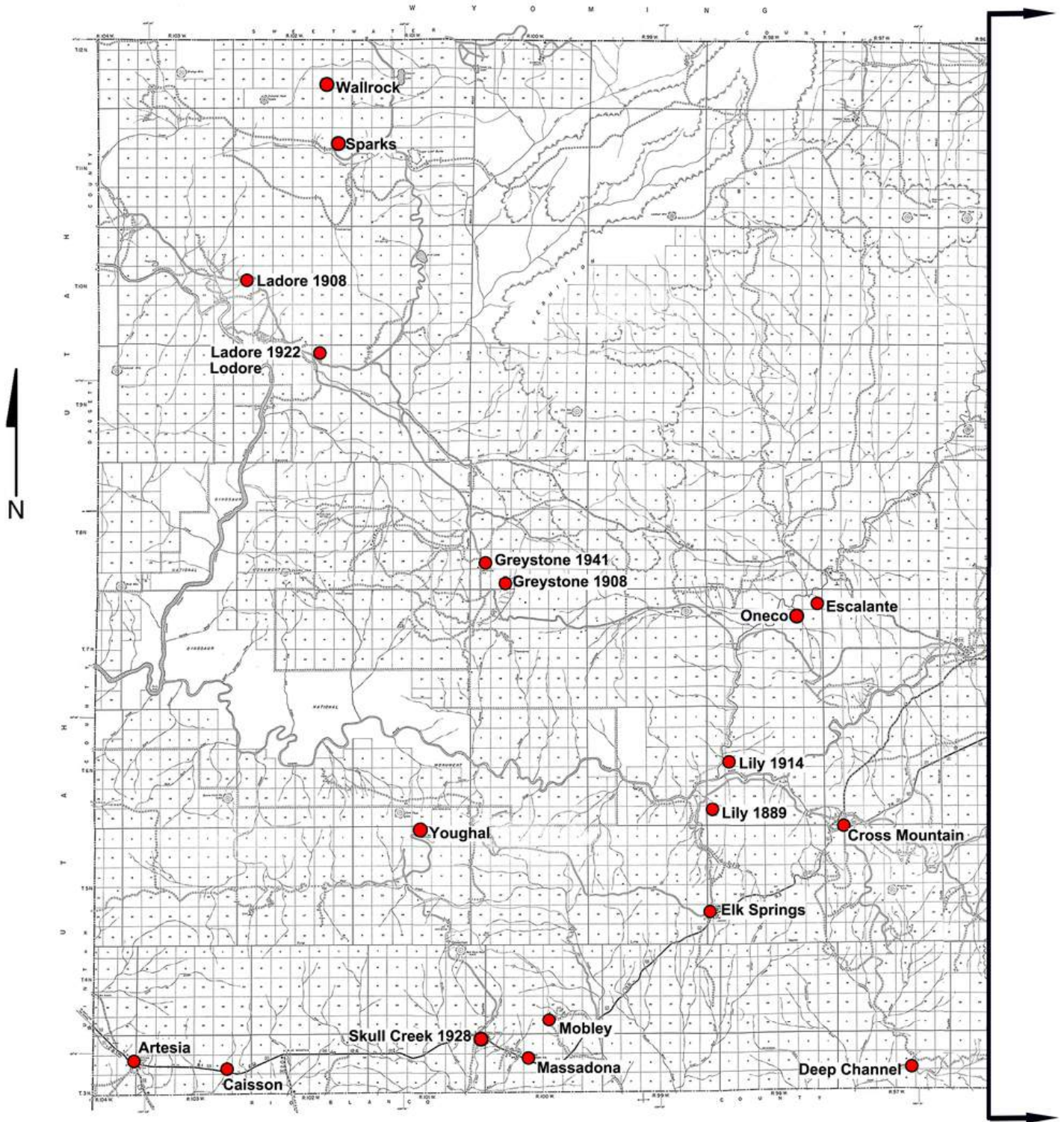
Northwestern Colorado remained Indian Territory until after the Meeker Massacre of 1879. Prior to that time only a few whites dared to attempt settlement along the Yampa or Bear River. As early as 1836 there was a small fur trading post, called Fort Davy Crockett, in Brown's Hole (today's Browns Park). In 1839 a German visitor – F. A. Wislitzanus described the fort: "It is a low one-story building constructed of wood and clay, with three connecting wings and no enclosure...it is also known to the trappers by the name of Fort Misery." When Charles Fremont passed through the area in 1844 the fort was abandoned with only a few walls standing. Later in the nineteenth century, thanks to its relative isolation, Browns Park developed a rather unsavory reputation as a hideout for bandits and rustlers.

There are two major travel arteries across the county, both intersecting at Craig near the eastern boundary. US 40 defines the east-west corridor and prior to the development of the Interstate Highway System, it was a major transcontinental highway supporting numerous small towns in Moffat County. Along US 40 only Craig, Maybell and Dinosaur have retained their post offices. The north-south highway, Colorado 13, comes south from Baggs, Wyoming to Craig and then on to Meeker in Rio Blanco County. On this road, other than Craig, only Hamilton still has a post office. The fifth active post office in the county is at Slater in the far northeast corner of the county and only a few hundred yards south of the boundary with Wyoming.

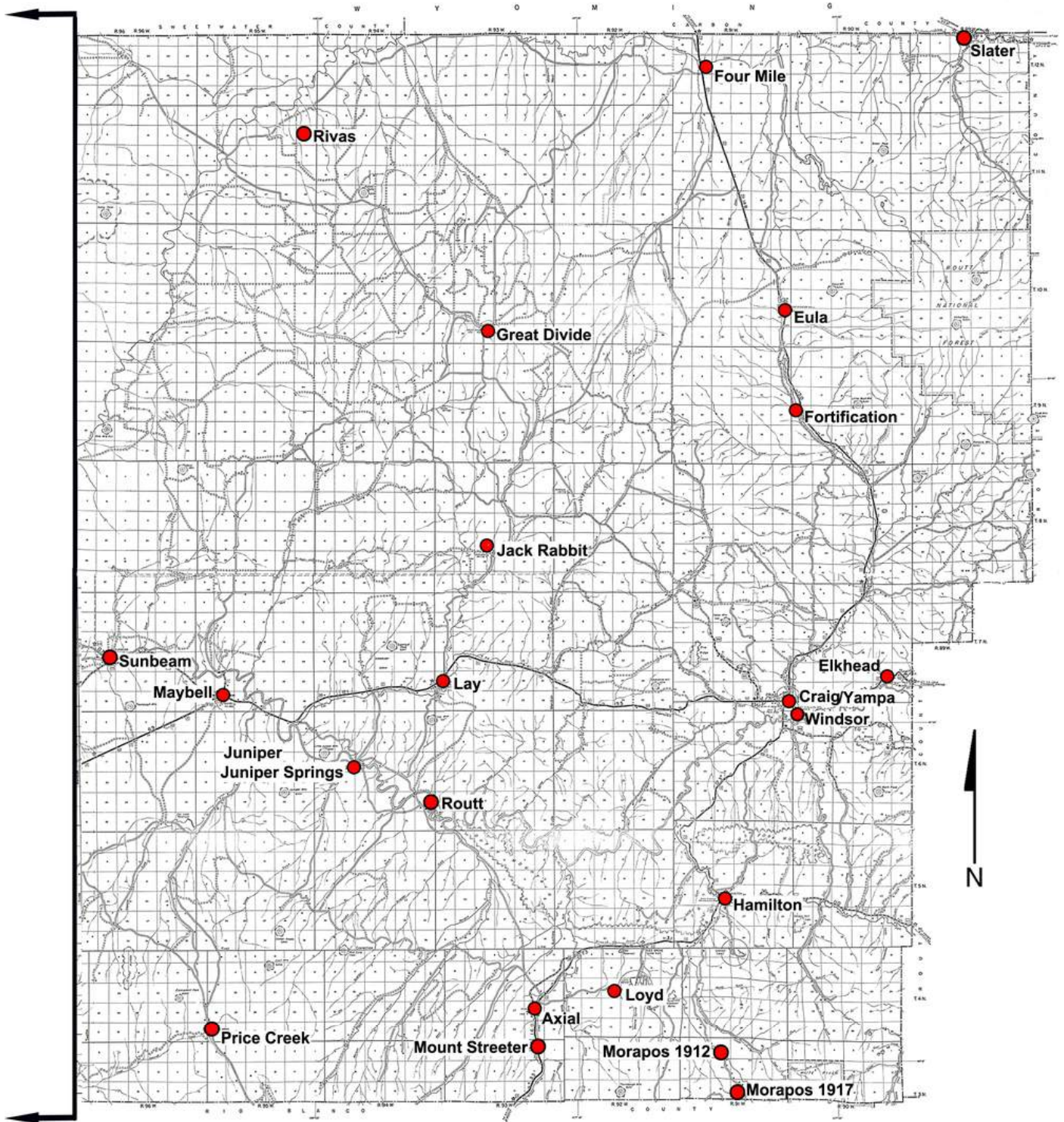
In addition to the main highways, significant secondary roads reach northwest from Maybell through Browns Park to Bridgeport, Utah, and from Maybell south through Price Creek to Meeker. Near the state line, an east-west road traverses the vast, sparsely populated northern portion of the county. From this road a branch drops south to Craig by way of Great Divide. Before venturing on these roads, be sure to fill your gas tank. In the area north of US 40, I saw only one service station!

Initially the economy of this portion of Colorado was based on agriculture. Stock-raising predominated although grain can be grown in portions of the valleys of the Yampa and Snake Rivers and some upland areas. Hay is also a major crop. Hard rock mining has not been an important factor in Moffat County. Most attempts were uneconomical and hence short-lived. However, early on, coal became important to the county and today several large strip mines ship coal to both local and distant power plants. Oil is another local product with most of the current production in the northern portion of the county. Tourism is of growing importance to the economy. Hunting and fishing were an attraction even before permanent settlements were established in the county. Now winter sports and summer resorts have gained in prominence.

The climate of the county is semi-arid with the northern portion approaching desert conditions. The valleys of the Yampa and the Snake Rivers provide water for local irrigation through much of the year. Other streams provide water during the spring and early summer. The topography of the county is varied. The Elk Mountains in the northeast and the Blue Mountains in the west, are the principal ranges. Most of the county is hilly with considerable relief. Level ground is found along the rivers and on scattered mesas. Wildlife is abundant. Cross Mountain and the Canyon of Lodore are major features of a varied and attractive landscape. Western Moffat County is home to Dinosaur National Monument, a must see attraction for visitors to Moffat County.



Post Office Location Map – Western Moffat County



Post Office Location Map – Eastern Moffat County



Photograph by Jeffrey Beall

FORTIFICATION ROCKS

From: <https://www.flickr.com/photos/31437555@N00/14255634492/>

ARTESIA

Artesia developed shortly after World War II. Its initial purpose was to serve as a residence for the oil field workers in the rapidly developing Rangely Oil Field. As time passed the Rangely Field approached maturity and by 1966 Artesia was in decline. In an attempt to counteract that situation and to take advantage of the settlement's proximity to Dinosaur National Monument, the name of the town was changed to Dinosaur (See Dinosaur).

Artesia was incorporated in 1948 with Floyd "Pop" Cady as its first mayor. Cady had visited the area as early as 1914 and was a long time resident. It is claimed that Cady's hometown was Artesia, New Mexico, and that the new community was named for that town. The word Artesia refers to artesian water supplies that were important in the development of the Rangely Oil Field.

Artesia is located at the junction of highways US 40 and Colorado 64, about two and a half miles east of the Utah State line. One of the entrances to Dinosaur National Monument is a mile and a half east of the town.

Chronology of the Post Office

Oct 25 1945	---	NE/4 Sec 12 T3N R104W	
Mar 20 1946		Established	
Mar 20 1946		Iacovetto, Harold	Assumed charge
Mar 25 1946		Iacovetto, Harold	Acting
Jul 1 1946			Office made Presidential
Jan 30 1948		Iacovetto, Harold	Nominated
Jun 15 1948		Iacovetto, Harold	Confirmed
Jun 16 1948		Iacovetto, Harold	Appointed Presidential & Commissioned
Jun 16 1948		Iacovetto, Harold	Appointed
Dec 31 1948		Iacovetto, Harold	Assumed charge
Jun 6 1949	---	NE/4 Sec 12 T3N R104W	
Jan 1 1966		Name changed to Dinosaur	

Confirmed types of postal markings

1	ARTESIA / COLO. CI 10P 33.5	4bars S-23x19mm	May 1 1946 Oct 3 1948
2	ARTESIA / COLO. CI 10P 30.0	Dplx Grid, diamond	Oct 24 1949 Jan 20 1962
3	ARTESIA, CO / 81610 CI 10P 32.0	4bars S-25x20mm	with 1 Dec 31 1965



AXIAL

During its prime, Axial was a significant coal mining community. Coal mining is still a major activity in the area. The operational headquarters of the Colowyo Coal Mining Company are near the site but only two small buildings remain from the original activity. The town is gone. In addition to coal mining, Axial also served as a supply center for the surrounding cattle range.

AXIAL – Continued

The site of Axial is on Colorado 13 a little over four miles north of the Rio Blanco County line, twelve miles southwest of Hamilton and twenty-three miles from Craig by way of Colorado 13. The entrance gate to the Colowyo Mine can identify the site.

The name Axial is derived from the geologic structure where it is located. Major John Wesley Powell conducted exploratory surveys of western Colorado in 1869 and again in 1871. He named the district the “Axial Basin” because the valley seemed to be the axis of the uplift that had raised the surrounding mountains.

Latitude = 40:17:07 North Longitude = 107:47:29 West



Axial, Colorado – On the west side of Colorado Highway 13, the last remaining building
 Photograph by William H. Bauer September 5, 1998

Chronology of the Post Office

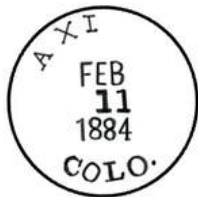
Apr 10 1883	---	Unsurveyed 10 miles south of the Bear River West side of Milk Creek
Mar 6 1883		Established
Mar 6 1883		Taylor, William S.
Nov 16 1885		Eddy, Henderson H.
Feb 20 1886		Taylor, Eugene
Apr 9 1886		Discontinued Papers to Meeker
May 17 1886	---	W/2 Sec 35 T4N R93W On west side of Spring Creek
Nov 9 1886		Re-established
Nov 9 1886		Miller, William H.
Apr 3 1888		Discontinued Papers to Meeker
Feb 22 1890	---	SW/4 Sec 26 T4N R93W
Mar 4 1890		Re-established
Mar 4 1890		Taylor, Eugene

AXIAL – Continued

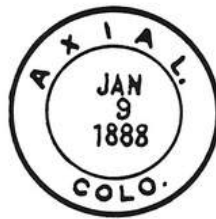
Jun 12 1896	Taylor, William S.	
May 11 1899	Taylor, Mary J.	
Feb 9 1910	Wolcott, Mary F.	
May 9 1911 ---	NE/4 SW/4 Sec 26 T4N R93W	On west side of Good Spring Creek
Apr 29 1914 ---	SE/4 Sec 26 T4N R93W	200 feet west of Good Spring Creek
Dec 22 1920	Ledford, Nellie	
Mar 16 1925	Benner, Ezra R.	Acting
Apr 6 1925 ---	Lots 1,2,3 Axial townsite Block 1 T4N R93W	150 yards northwest of Spring Creek
Jun 18 1925	Benner, Ezra R.	Appointed
Jan 6 1927	Voetzel, Eugene	Acting
Sep 14 1927	Phelan, Mrs. Margaret A.	Confirmed
Sep 30 1927	Phelan, Mrs. Margaret A.	Commissioned
Oct 6 1927	Phelan, Mrs. Margaret A.	Assumed charge
Oct 23 1941 ---	SE/4 SW/4 Sec 26 T4N R93W	Good Spring Creek 400 feet to east of post office
Jun 30 1956	Long, Mrs. Shirley	Assumed charge
Jul 9 1956	Long, Mrs. Shirley	Acting
Nov 2 1956	Long, Mrs. Shirley	Appointed
Apr 30 1958	Discontinued	

Confirmed types of postal markings

0.1	AXIAL / COLO. CI 10P 25.0	rectangular grid	Feb 11 1884
1	AXIAL, / COLO. CI 11P 27.0/17.5	Hstp Cork, 7-bar rectangular grid	Aug 24 1887 Jan 9 1888
2	AXIAL / COLO. CI 10P 27.5	Hstp Cork, Smudge	Nov 27 1893 Aug 21 1906
2.1	AXIAL / COLO. CI 10P 31.0	4bars S-??x13mm	Jan 24 1910 Oct 1 1914
3	AXIAL. / COLO. CI 10P 32.5	4bars S-24x19mm	Oct 13 1934
4	AXIAL / COLO. CI 10P 32.0	4bars S-23x18mm	Nov 8 1939 May 10 1941
5	AXIAL / COLO. CI 10P 34.0	4bars S-24x20mm	Jun 4 1951 Apr 30 1958
6	AXIAL / COLO. CI 11P 30.0/20.0	Hstp No Killer	Apr 30 1958



0.1



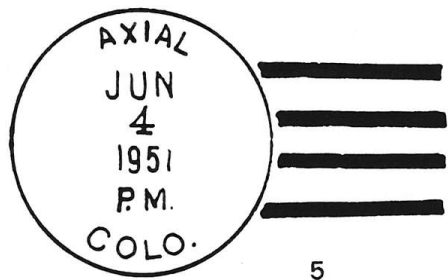
1



2



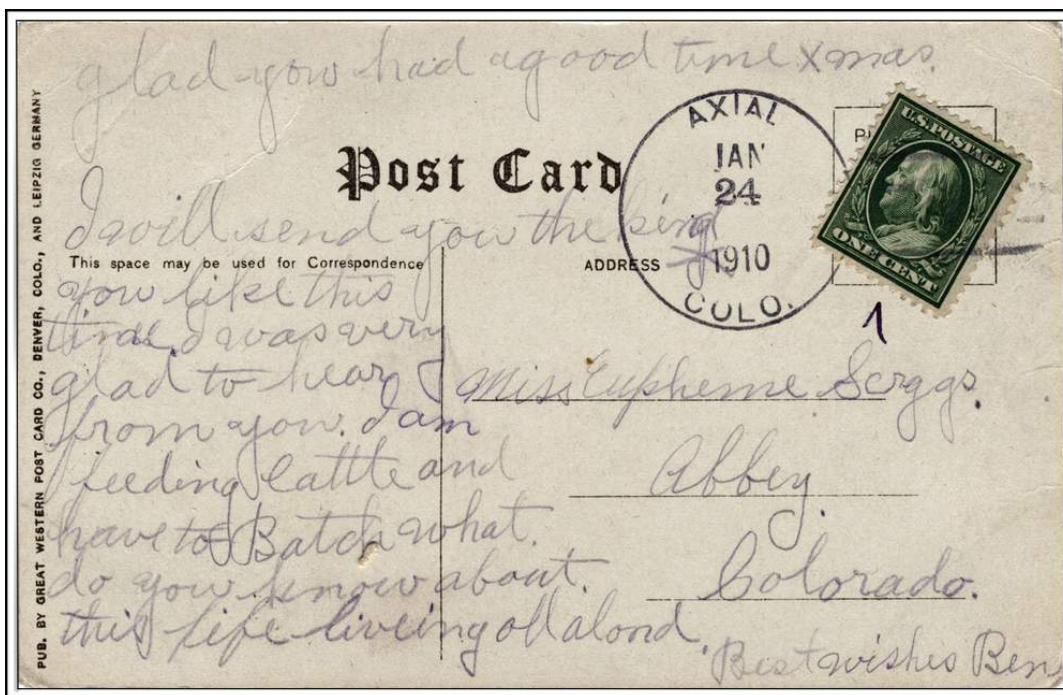
AXIAL – Continued



5



6



AXIAL / COLO.

January 24, 1910

[Type 2.1]

BLUE MOUNTAIN

Blue Mountain is another of the small communities along highway US 40 in the western end of Moffat County. It is about eight miles east of Dinosaur, at the intersection of a county road south to Rangely. In the fall of 1998 there remained a few scattered residences on the south side of US 40 and an abandoned motel on the north side of the highway. In 1949 the post office was moved here from Skull Creek (ten miles further east) but lasted only eight years, to 1957.

Tourism along US 40, supported the community for a time. There was some mining in the Blue Mountains but nothing of any importance. Today ranching and employment in oil production and coal mining activities support the remaining residents.

Latitude = 40:14:54 North Longitude = 108:51:40 West

Chronology of the Post Office

- Sep 1 1949 Post Office moved from Skull Creek and name changed
- Sep 1 1949 Warner, James S.

**THE COLORADO POSTAL ENCYCLOPEDIA
MOFFAT COUNTY**

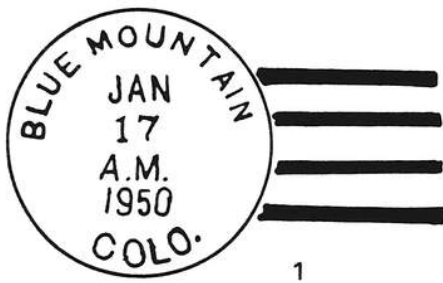
BLUE MOUNTAIN – Continued

Mar 4 1949 Warner, James S.
 Mar 28 1949 Warner, James S.
 Apr 9 1949 Warner, James S.
 Jan 31 1957 Discontinued Mail to Artesia

Confirmed (Skull Creek)
 Commissioned
 Assumed charge

Confirmed types of postal markings

- | | | | |
|---|---|-----------------|------------------------|
| 1 | BLUE MOUNTAIN / COLO.
CI 10P 34.0 | 4bars S-24x19mm | Jan 17 1950 Aug 2 1950 |
| 2 | BLUE MOUNTAIN / COLO.
CI 10P 35.0 | 4bars S-25x19mm | May 28 1954 Feb 6 1953 |
| 3 | BLUE MOUNTAIN / COLO.
CI 11P 30.0/19.0 | Hstp No Killer | Feb 6 1953 |



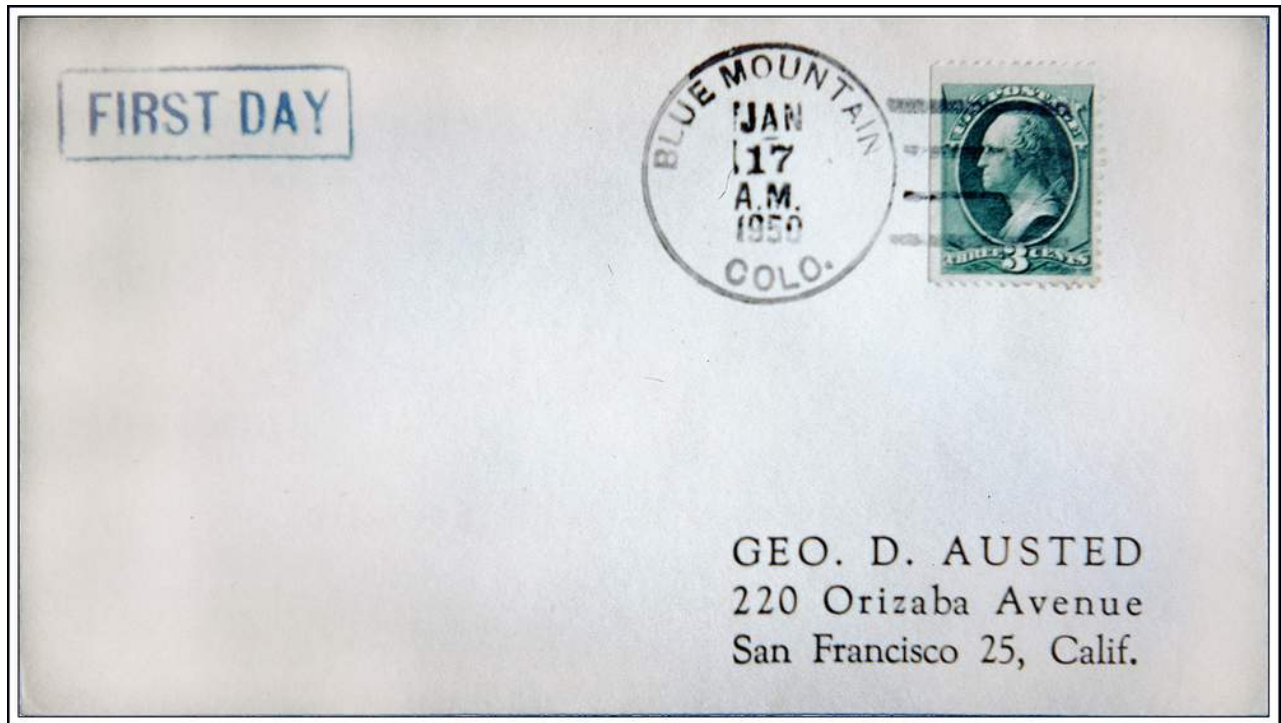
1



2



3

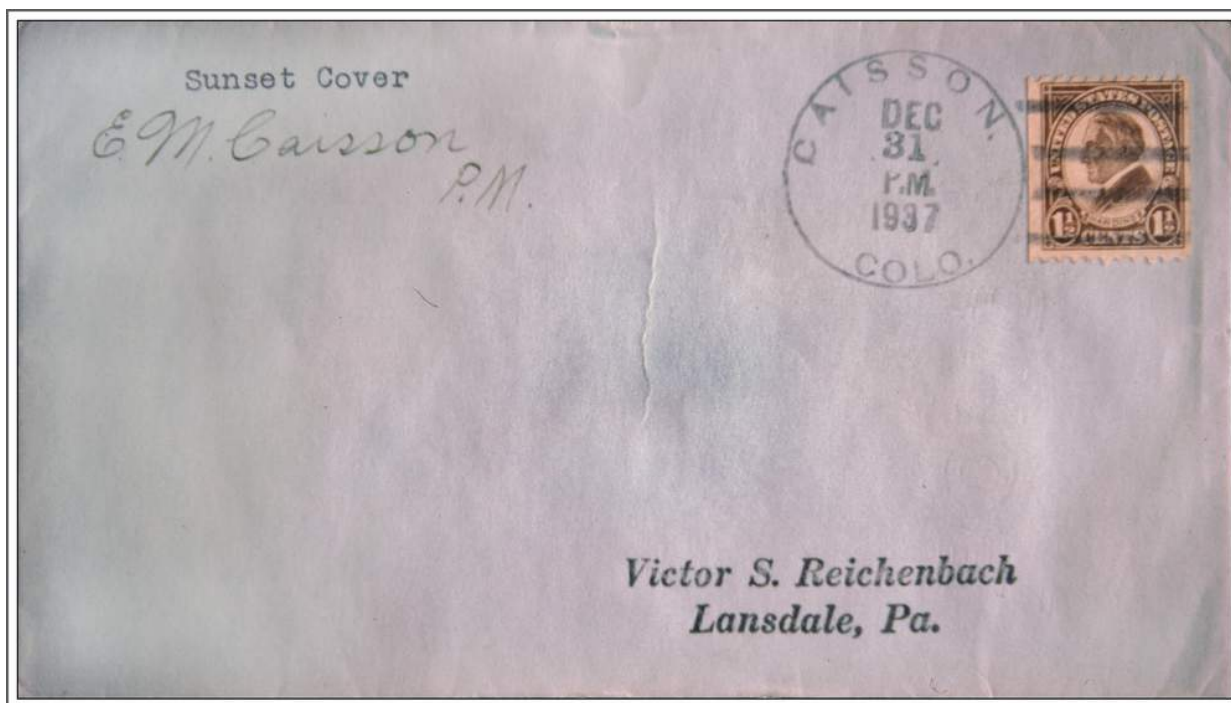


BLUE MOUNTAIN / COLO. January 17, 1950 First Day of this post office name

CAISSON

Caisson was a stock-raising community founded in 1921 by Edward M. Caisson. It was on the north side of US 40. The plotted site is 3.5 miles west of Blue Mountain (4.5 miles east of Dinosaur). From the highway, and about a quarter mile north against the hills, is an old building with no direct access. However, I feel that a more likely site is a mile further east where there is a well preserved but abandoned ranch.

The name of the post office is from Edward M. Caisson, the first and only postmaster.



CAISSON, / COLO. December 31, 1937

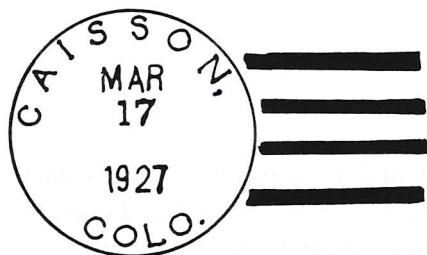
Last Day of post office

Chronology of the Post Office

- May 15 1920 --- SW/4 Sec 11 T3N R103W
Applicant for postmaster - E. M. Caisson
- Sep 3 1920 Established
- Sep 3 1920 Caisson, Edward M. Confirmed
- Apr 28 1927 --- SE/4 Sec 11 T3N R103W 1 mile west of Willow Creek
- Dec 1 1937 Ordered closed
- Dec 31 1937 Discontinued Mail to Skull Creek

Confirmed types of postal markings

1 CAISSON, / COLO. Mar 17 1927 Dec 31 1937
CI 10P 32.0 4bars S-23x19mm



CRAIG

Craig is the county seat and the principal town of Moffat County. It was one of the earliest settlements in the county; however the name Craig was not adopted until 1889.

In 1875 Mr. and Mrs. John Banks and their three sons came to the valley and built a cabin near the mouth of Fortification Creek. Others soon followed to the area and the settlements of Yampa and Windsor developed in the vicinity of what is now Craig.

In 1889 the Craig Land and Mercantile Company was formed. For \$2,500 The Reverend William Bayard Craig, Jerry Hill and Frank Russell purchased 320 acres from Frank Rammey. An additional 160 acres were acquired from a Mr. Barkley for \$1,500. W. H. Tucker, another partner in venture, surveyed and platted the land as a townsite. Although the town was named for the Reverend Craig, a minister in the Christian Church, he never lived in the town and a visit on July 4, 1891 may have been his only personal contact with the community that perpetuates his name.

Soon after the establishment of the Craig townsite, the Yampa Post Office moved to the more formal settlement and took the name of Craig in honor of the Reverend Craig. Craig rapidly developed as the primary supply center for a large portion of Northwestern Colorado, a position it still holds. Initially the principal access was either from Rawlins, Wyoming or from Rifle on the Denver & Rio Grande Railway via Meeker. Later, the Denver and Salt Lake Railroad built a line north to Steamboat Springs and eventually on to Craig. With the development of automobile travel, Craig found itself on US 40, one of the principal transcontinental routes until the development of the Interstate Highway System. US 40 is still a well-traveled and prime scenic route through the Rocky Mountains.

Modern Craig at the intersection of US 40 and Colorado 13, with a population approaching 10,000, is the commercial, legal and cultural hub of Northwestern Colorado. It hosts the annual Moffat County Fair, rodeos and other celebrations. Craig offers good motels and restaurants for tourists, hunters and fishermen. Nearby guest ranches serve many visitors to Colorado.

Latitude = 40:30:55 North Longitude = 107:32:45 West

Chronology of the Post Office

Aug 28 1889	Formerly named Yampa	
Aug 28 1889	Murray, Tena	
Mar 27 1890	Teagarden, William F.	
Nov 1 1892	Breeze, Lewis H.	
Jan 9 1894	McKay, Joseph C.	
Nov 18 1897	Breeze, Rosella A.	
Sep 23 1903	Spencer, Walter	
Jan 11 1911	Spencer, Walter	P&S [Apptd. by President & confirmed by Senate]
Apr 23 1914 ---	SE/4 Sec 36, T7N R91W Yampa St, between Main & 4th	
Jan 12 1915	Ledford, Virgil C.	P&S
Jan 13 1916 ---	NE/4 Sec 1 T6N R91W NOTE: This office was moved last spring from the SE/4 Sec 32 T7N R91W to its present location	
Jun 4 1920	Beckett, Irving P.	
May 19 1924	Beckett, Irving P.	
May 12 1928	Beckett, Irving P.	Confirmed
Apr 22 1932	Beckett, Irving P.	Nominated
May 19 1932	Beckett, Irving P.	Confirmed
Jun 25 1932	Beckett, Irving P.	Commissioned
Aug 8 1935	Failing, Lloyd W.	Acting
Aug 17 1935	Failing, Lloyd W.	Assumed charge
Jan 6 1936	Failing, Lloyd W.	Nominated
Feb 3 1936	Failing, Lloyd W.	Confirmed
Feb 7 1936	Failing, Lloyd W.	Appointed Presidential
Feb 27 1936	Failing, Lloyd W.	Commissioned

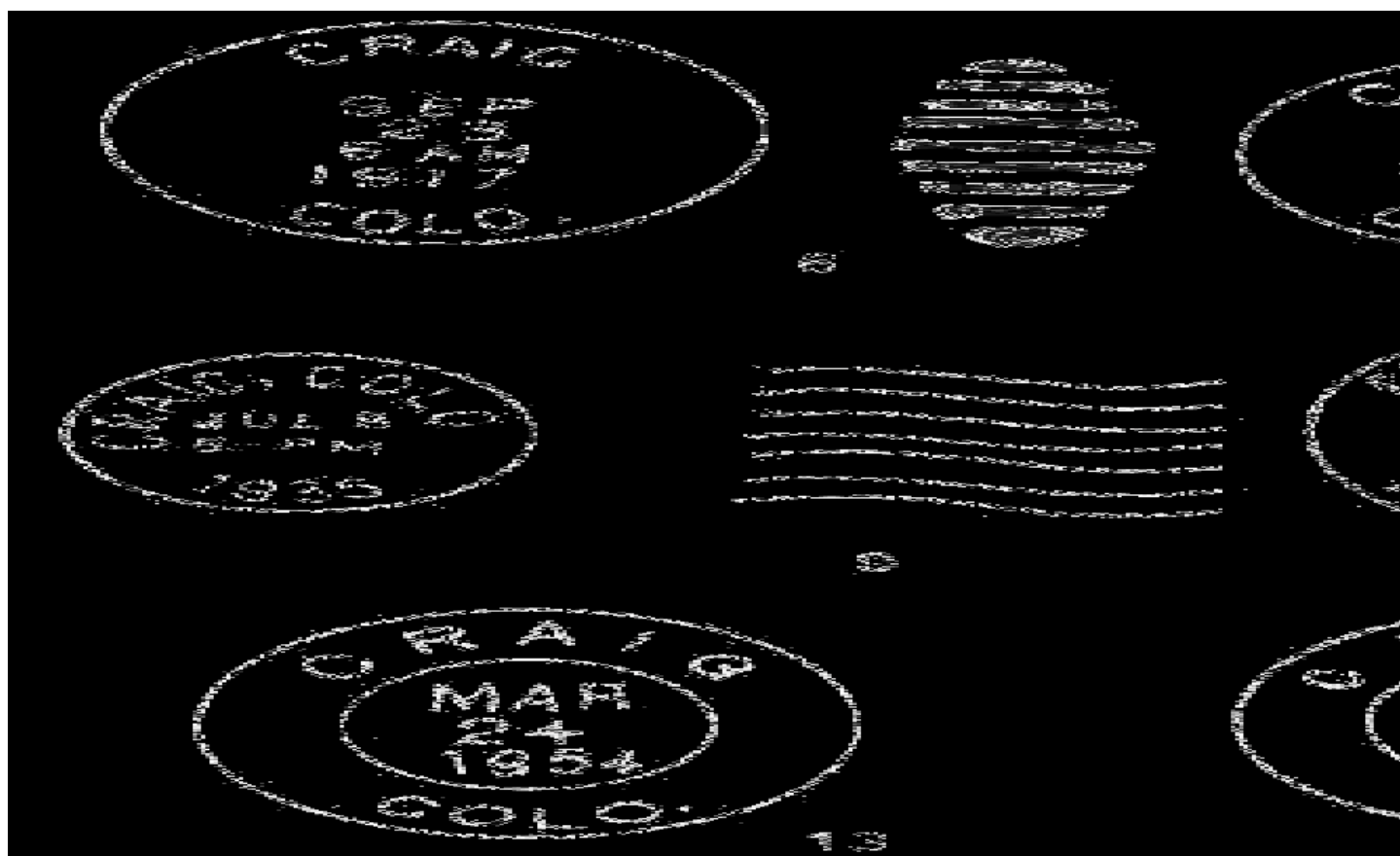
CRAIG – Continued

Mar 22 1940	Failing, Lloyd W.	Nominated
Mar 7 1940	Failing, Lloyd W.	Confirmed
Apr 21 1940	Failing, Lloyd W.	Appointed Presidential
Apr 17 1940	Failing, Lloyd W.	Commissioned
Oct 21 1941 ---	N/2 N/2 NE/4 Sec 1 T6N R91W 405 Yampa Avenue	
Oct 31 1946	Sullivan, Ernest E.	Acting
Nov 1 1946	Sullivan, Ernest E.	Assumed charge
Apr 28 1949	Sullivan, Ernest E.	Nominated
Jun 1 1949	Sullivan, Ernest E.	Confirmed
Jun 2 1949	Sullivan, Ernest E.	Appointed Presidential & Commissioned
Jul 8 1949	Sullivan, Ernest E.	Assumed charge
Oct 31 1961	Smith, William J.	Assumed charge
Nov 2 1961	Smith, William J.	Acting
Apr 25 1963	Smith, William J.	Appointed Presidential & Commissioned
May 24 1963	Smith, William J.	Assumed charge

Confirmed types of postal markings

1	CRAIG / COLO CI 10P 27.0	Hstp Target	May 23 1888 Jan 10 1896
2	CRAIG, COLO. / M.O.B. CI 11P 30.0/18.0	Hstp No killer	Mar 4 1987 Mar 29 1897
3	CRAIG, / COLO. CI 10P 30.0	Hstp 13 star waving flag simulating machine cancel	Mar 23 1899 Jul 7 1899
3.1	CRAIG, / COLO. CI 10P 28.0	Doane Type 2 with 7	Jun 3 1904 Apr 17 1907
4	CRAIG, / COLO. CI 10P 31.0	4bars S-??x13mm	Jan 20 1909 Nov 3 1909
5	CRAIG / COLO. CI 10P 31.0	4bars S-??x19mm	Aug 27 1911
6	CRAIG / COLO. CI 10P 30.0	Dplx Grid, 9-bar oval	Aug 17 1900 Jun 24 1918 (May actually be type 5)
7	CRAIG / COLO. CI 10P 25.0	Dplx Grid, Oval with 1	Dec 4 1920 Jul 12 1924
8	CRAIG COLO. / PARCEL POST CI 11P 29.5/19.0	Hstp No killer	Feb 23 1927
8.1	CRAIG / COLO. RC 10P 26.0x15.0	Hstp No killer, Parcel Post Box	1920s
9	CRAIG, COLO. CI 10P 21.0	Mach 7 wavy lines	Feb 10 1933 Mar 9 1962
10	CRAIG, COLO. / REGISTERED CI 11P 29.0/19.0	Hstp No killer	Nov 26 1940 Aug 23 1941
11	CRAIG / COLO. CI 10P 30.0	Dplx Grid, pointed oval with 1	Feb 5 1948 Dec 8 1951
12	CRAIG / COLO. CI 11P 30.0/19.0	Hstp No killer (close spaced letters)	Mar 12 1951 Feb 2 1954
13	CRAIG / COLO. CI 11P 30.0/19.0	Hstp No killer (medium spaced letters)	Mar 24 1954
14	CRAIG / COLO. CI 11P 30.0/19.0	Hstp No killer (wide spaced letters)	May 28 1955
15	CRAIG, COLO. CI 10P 20.0	Mach Slogan in box with bars: CRAIG-MOFFAT / GOLDEN JUBILEE / JULY 18, 19, 20, 21.	Jun 2 1958 Jun 7 1958
16	CRAIG / CO 81625 RC 10P 49.0x17.0	Hstp No killer (Parcel Post Box style)	--- -- 1960
17	CRAIG, COLO. CI 10P 21.0	Mach 7 wavy lines	May 10 1964 Aug 31 1964

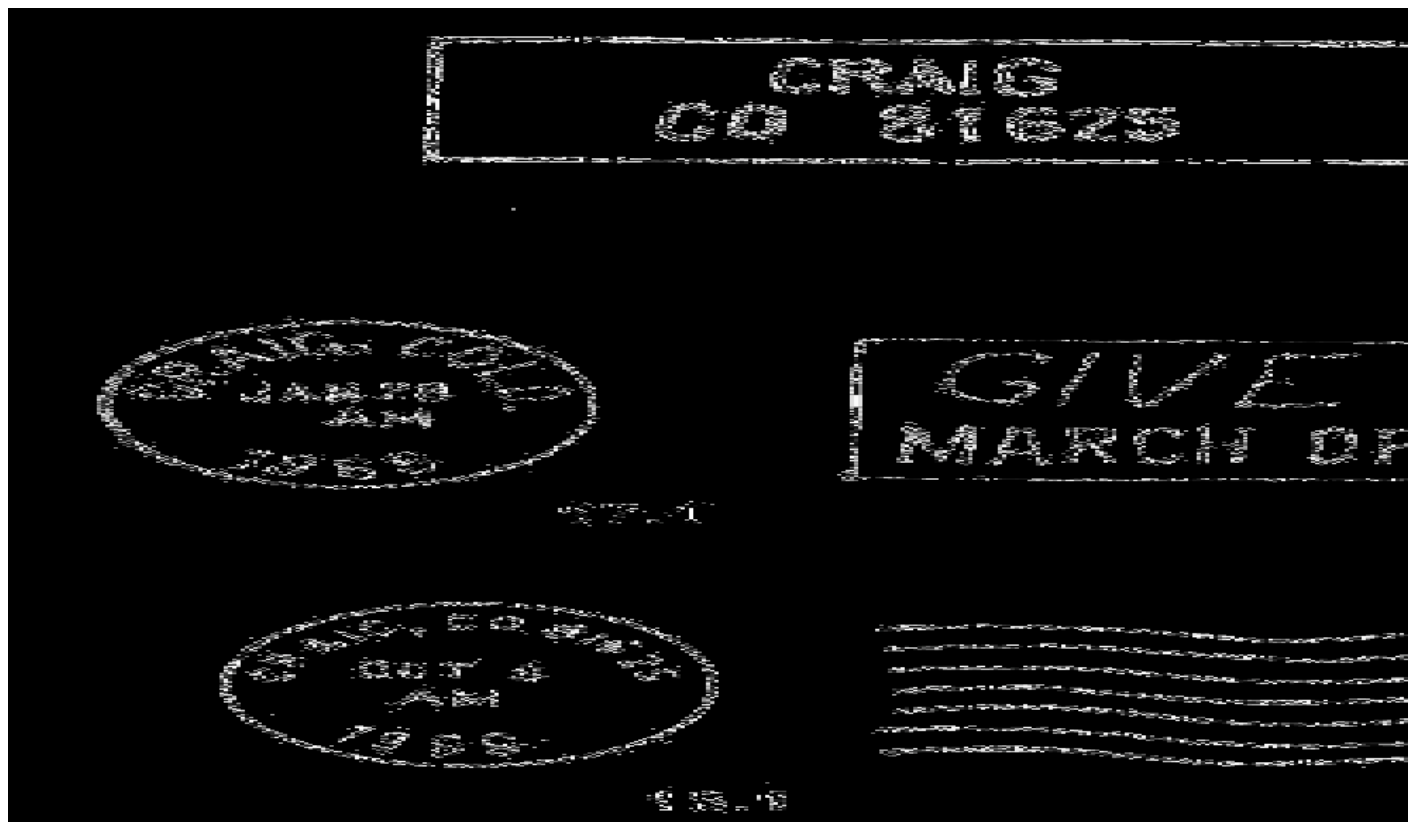
CRAIG – Continued



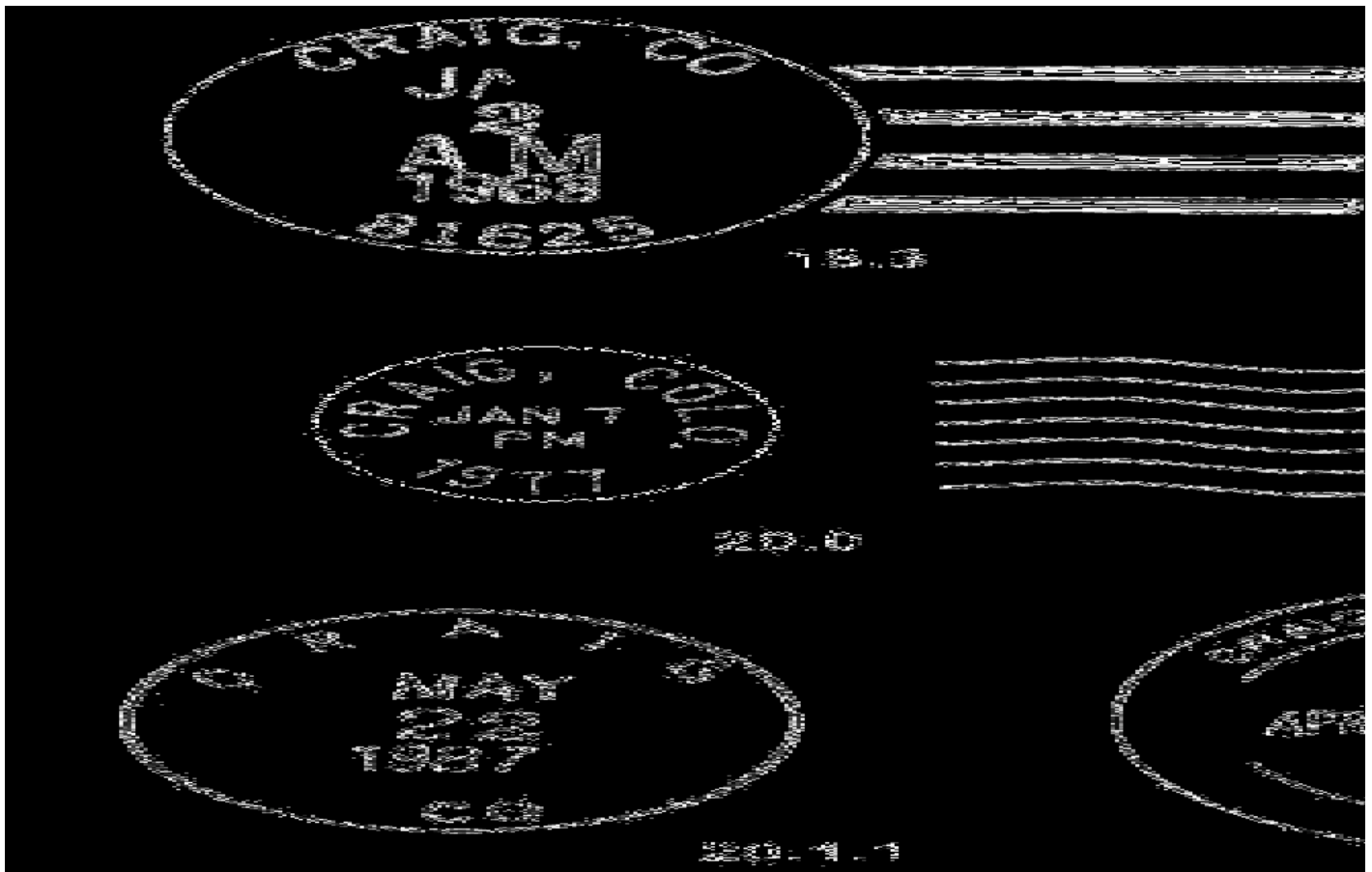
- | | | |
|------|----------------------------------|--|
| 17.1 | CRAIG, COLO.
CI 10P 21.0 | Jan 28 1965
Mach Slogan in box with bars: GIVE TO THE /
MARCH OF DIMES |
| 18 | CRAIG, COLO.
CI 11P 31.0/23.0 | Aug 31 1964 Jul 22 1972
Rolr Slanted wavy lines |
| 18.1 | CRAIG, CO 81625
CI 10P 21.0 | Mar 22 1966 Mar 19 1973
Mach 7 wavy lines |

CRAIG – Continued

18.2	CRAIG, CO 81625 CI 10P 21.0	May 24 1966 Feb 18 1969 Mach Slogan in box with bars: GIVE TO THE / MARCH OF DIMES
18.3	CRAIG, CO / 81625 CI 10P	Jan 2 1968 32.0 4bars S-24x20mm
19	CRAIG / COLO. CI 11P 30.0/20.0	Oct 5 1972 Hstp No killer
20	CRAIG, CO / 81625 CI 10P 32.0	May 11 1976 4bars S-24x19mm
20.0	CRAIG, COLO, CI 10P 21.0	Jan 7 1977 Mach 7 wavy lines
20.1	CRAIG, CO / 81625 CI 10P 31.0	Apr 6 1987 4bars S-25x18mm
20.1.1	CRAIG / CO. CI 10P 30.0	May 22 1987 Hstp No Killer
20.2	CRAIG, CO 81625-9998 / USPS CI 11P 36.0/28.0	Apr 16 1990 Hstp No Killer
21	CRAIG, CO / 81625 CI 10P 20.5	Oct 9 1985 May 27 1993 Mach 7 wavy lines
21.1	CRAIG, CO / 81625 CI 10P 32.5	Jan 28 1991 4bars S-24x19mm very similar to 18.3 above
22	CRAIG, CO 81625 / USPS CI 11P 28.0/19.0	Jul 23 1992 May 28 1993 Hstp No killer
23	CRAIG CO 81625 / USPS CI 11P 30.0/19.0	Jun 7 1996 Hstp No killer



CRAIG – Continued



CRAIG STATIONS

CRAIG STATION

Chronology of the Post Office

- | | |
|-------------|---|
| May 2 1987 | Operated as a Special Commemorative Station |
| Aug 28 1989 | Operated as a Special Commemorative Station |
| May 25 1992 | Operated as a Special Commemorative Station |

Confirmed types of postal markings

1 CRAIG, CO / 81625
CI 10P 32.0

May 2 1987
Pict Scene - 4 Police badges at right of cds

CRAIG STATION – Continued

2 Craig, Co. 81625 STA
IR 00r 75.0x45.0

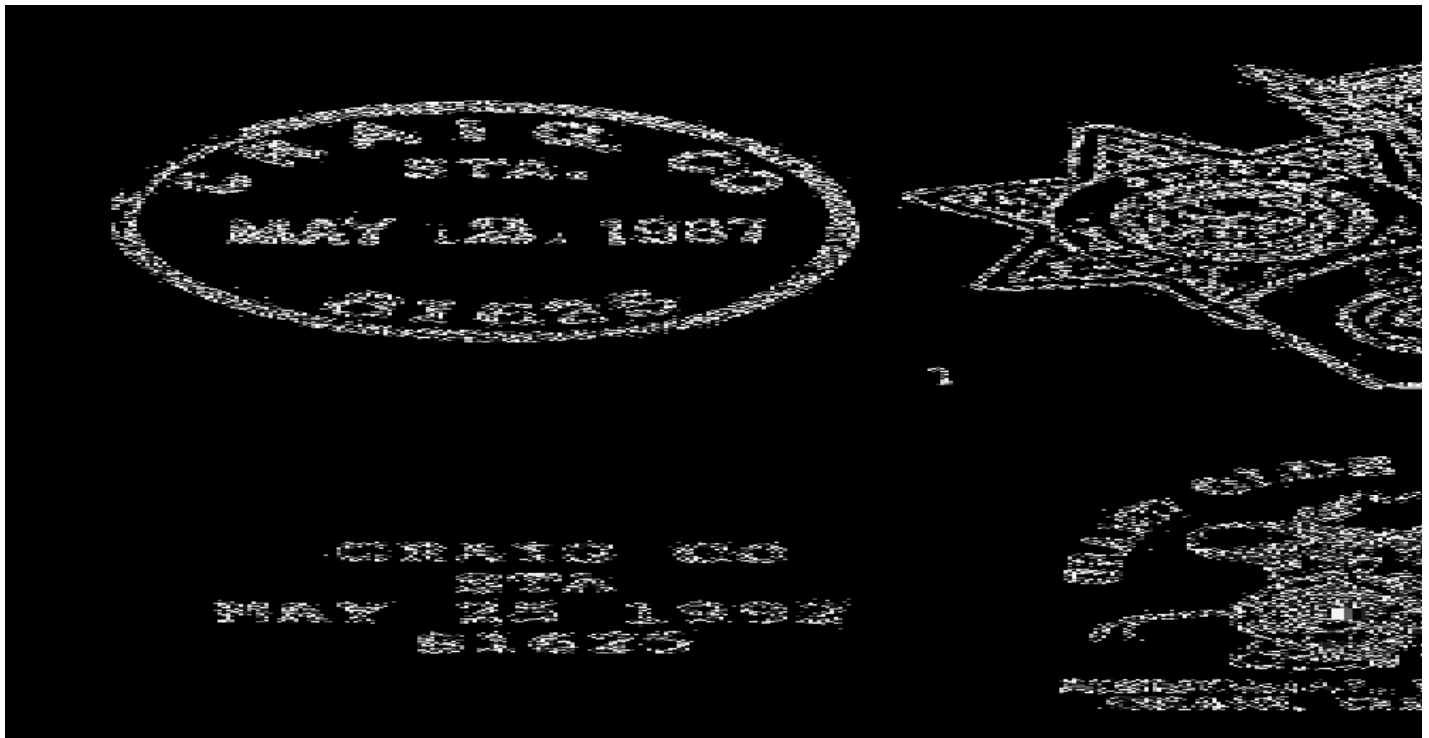
Aug 28 1989

Pict Scene - Aspen leaf with four scenes; Postoffice - 100 years

3 CRAIG CO / STA / 81625
SL 00R 27.0x15.0

May 25 1992

Pict Scene - Tombstone pictorial; cowboy pointing gun;
framed by text - GRANDE OLDE WEST DAYS /
MEMORIAL WEEKEND / CRAIG, COLORADO



ELK SPRINGS COMMUNITY POST OFFICE

Chronology of the Post Office

May 7 1966 Converted to an Independent Rural Branch

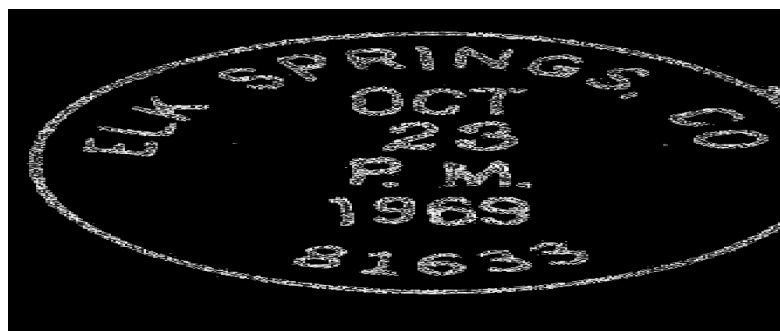
 Re-Classified as a Community Post Office

 Closed

Confirmed types of postal markings

- | | | | |
|---|---|-----------------|-------------------------|
| 1 | ELK SPRINGS, CO / 81633
CI 10P 34.0 | 4bars S-24x20mm | May 12 1966 Jun 12 1980 |
| 2 | CRAIG, CO ELK SPRINGS R BR / USPO
CI 11P 29.0/19.0 | Hstp No Killer | May 12 1966 May 10 1968 |

NOTE: The Zip Code device in use on the day of conversion to a Rural Branch, continued in use after the conversion (See Craig).



CRAIG STATIONS – Continued



**This building once housed the Elk Springs Community Post Office and a café.
Photograph by W. H. Bauer September 2, 1998**

LAW DAY 88 STATION

Chronology of the Post Office

May 21 1988 Operated as a Special Commemorative Station

Confirmed types of postal markings

- 1 CRAIG, CO / 81625 :: LAW / DAY / 88 :: STATION May 21 1988
CI 10P 32.0 Pict Scene - Policeman, traffic sign, 5 thin bars



CRAIG STATIONS – Continued

LAY RURAL STATION

Chronology of the Post Office

Aug 4 1962	Converted to a Rural Station
Feb 10 1966	Re-classified as a Rural Branch
Jun 30 1976	Closed

Confirmed types of postal markings

1	CRAIG, COLO. / LAY RUR. STA. CI 10P 34.0	4bars S-25x20mm	Aug 4 1962 May 29 1964
2	LAY, CO / 81625 CI 10P 34.0	4bars S-24x20mm	Mat 11 1968 Mar 11 1976
3	CRAIG, COLO. LAY RUR. STA. / USPO CI 11P 29.0/ 18.0	Hstp No Killer	Dec 21 1971



MOFFAT FAIR

Chronology of the Post Office

Aug 6 1994	Operated as a Special Commemorative Station
------------	---

Confirmed types of postal markings

1	CRAIG, CO 81625 :: MOFFAT FAIR STA. COLO. CI 11P 28.0/17.0	Pict Scene - Pictorial emblems of the fair, cluttered, most hard to read	Aug 6 1994
---	---	---	------------



CROSS MOUNTAIN

Cross Mountain was on US 40 about eight miles northeast of Elk Springs and twelve or thirteen miles southwest of Maybell. According to the Geographic Site Location Reports, the post office occupied at least four different locations within a two-mile range of each other. The last reported location was on US 40 at the intersection with Moffat County Road 95 (Moffat 95, a decent road, can be followed north to

CROSS MOUNTAIN – Continued

Sunbeam). No structures remain at this location, however, there is a concrete foundation a few feet north of US 40 in the northwest corner of the intersection.

There are several versions for the origin of the name Cross Mountain. The most reasonable is that it was named for Cross Mountain. Cross Mountain is about four miles north and the Yampa River has carved a deep narrow gorge through the mountain – hence the name. A mile and half to the west of Moffat 95, there is another side road north to Lily Park (See Lily). Where that road reaches the Yampa River, there is a small park and a worthwhile view of the gorge.

Chronology of the Post Office

Mar 30 1919	---	N/4 Sec 32 T6N R97W	
Jul 16 1919		Established	
Jul 16 1919		Gordon, Mark H.	
Jun 25 1921		Diesel, Adam R.	
Jul 18 1925		Killhan, William F.	Acting
Aug 13 1925		Killhan, William F.	Appointed
Sep 12 1927	---	SE/4 Sec 29 T6N R97W	This was a move 3/4 miles southeast of previous site
Jun 14 1928		Jacobs, Mrs. Waunita	Acting
Jun 20 1928		Jacobs, Mrs. Waunita	Appointed
Mar 10 1930	---	NW/4 Sec 6 T5N R97W	Move 2-1/4 miles south west of previous location
		3/4 mile east of Twelve Mile Creek	
Oct 2 1937	---	NE/4 Sec 6 T5N R97W	Move 1 mile east of previous location
		3/4 miles south of Twelve Mile Creek	
Nov 5 1941	---	NE/4 Sec 6 T5N R97W	
Jul 1 1943		Bryan, Mrs. William	Assumed charge
Jul 14 1943		Bryan, Mrs. William	Acting
Nov 8 1943		Ordered closed	
Nov 15 1943		Discontinued Mail to Maybell	

Confirmed types of postal markings

- | | | |
|---|--|---|
| 1 | CROSS MOUNTAIN, / COLO.
CI 10P 33.5 | Apr 24 1928
4bars S-??x??mm, used as backstamp [SRM: Scan no longer available] |
| 2 | CROSS MOUNTAIN, / COLO.
CI 10P 33.5 | Aug 6 1936 Oct 31 1942
4bars S-??x19mm, |



DEEP CHANNEL

In September 1998. I drove south from Maybell on Moffat County Road 57; I attempted to reach the site of Deep Channel less than two miles north of the Rio Blanco County line. According to my 1960 county map there was a road west from Price Creek to Deep Channel. However, when I reached Price Creek I found that the road was no longer a public road. I forged ahead to the Keystone Ranch where I talked with the owner. He informed me that the road was privately owned and was gated and padlocked at the edge of his property. Unfortunately, he was in the midst of haying, he could not escort me through. According to the ranch owner the only thing at the site of Deep Channel is some cellar depressions from a

DEEP CHANNEL – Continued

couple of buildings that were built into the hillside. From this description I interpret that Deep Channel was another of the ranch post offices of Colorado and served a few scattered ranches in a remote area of Moffat County. Deep Channel's short life was due to the lack of any good water. The post office took its name from nearby Deep Channel Creek.

According to my outdated map there was an alternate way to Deep Channel from Colorado 64, several miles to the west of Meeker. Being of a stubborn nature I tried that road. After driving some twelve miles north through an oil field and on an increasingly poorer road with no sign of habitation, I reached the county line and another locked gate. Close but no cigar! I might have been able to get around the gate with the condition of the road and the lack of any sign of habitation but I exercised good judgment and abandoned the search for Deep Channel.

Chronology of the Post Office

Mar 5 1922	--	SE/4 Sec 10 T3N R97W 700 feet north of Deep Channel Creek
Jun 28 1922		Established
Jun 28 1922		Campbell, Lynn S.
Jun 26 1926		Begy, Wesley
Aug 12 1926		Ordered closed
Aug 31 1926		Discontinued Mail to Price Creek

Confirmed types of postal markings

1	DEEP CHANNEL, / COLO. CI 10P 32.0	Nov 18 1922 Aug 24 1926 4bars S-24x19mm
---	--------------------------------------	--

**DINOSAUR**

The community, first called Artesia, was established in 1914 and incorporated in 1947. Officially the town name was changed in January 1965 by a vote of the people. Dinosaur was born legally on May 4, 1965 at 8:30 p.m. However, the post office name did not officially change until January 1, 1966.

Dinosaur's distinction is its location at the Gateway to Dinosaur National Monument; tourism related to the park is the town's principal industry. It was hoped that the change in name would attract more tourism and development to the community. In conjunction with the change in the town name, the streets were also given new names – for various species of dinosaurs.

Dinosaur is about 2-1/2 miles east of the Utah State line where Colorado 64 intersects US 40.

Latitude = 40:14:37 North Longitude = 109:00:50 West

Chronology of the Post Office

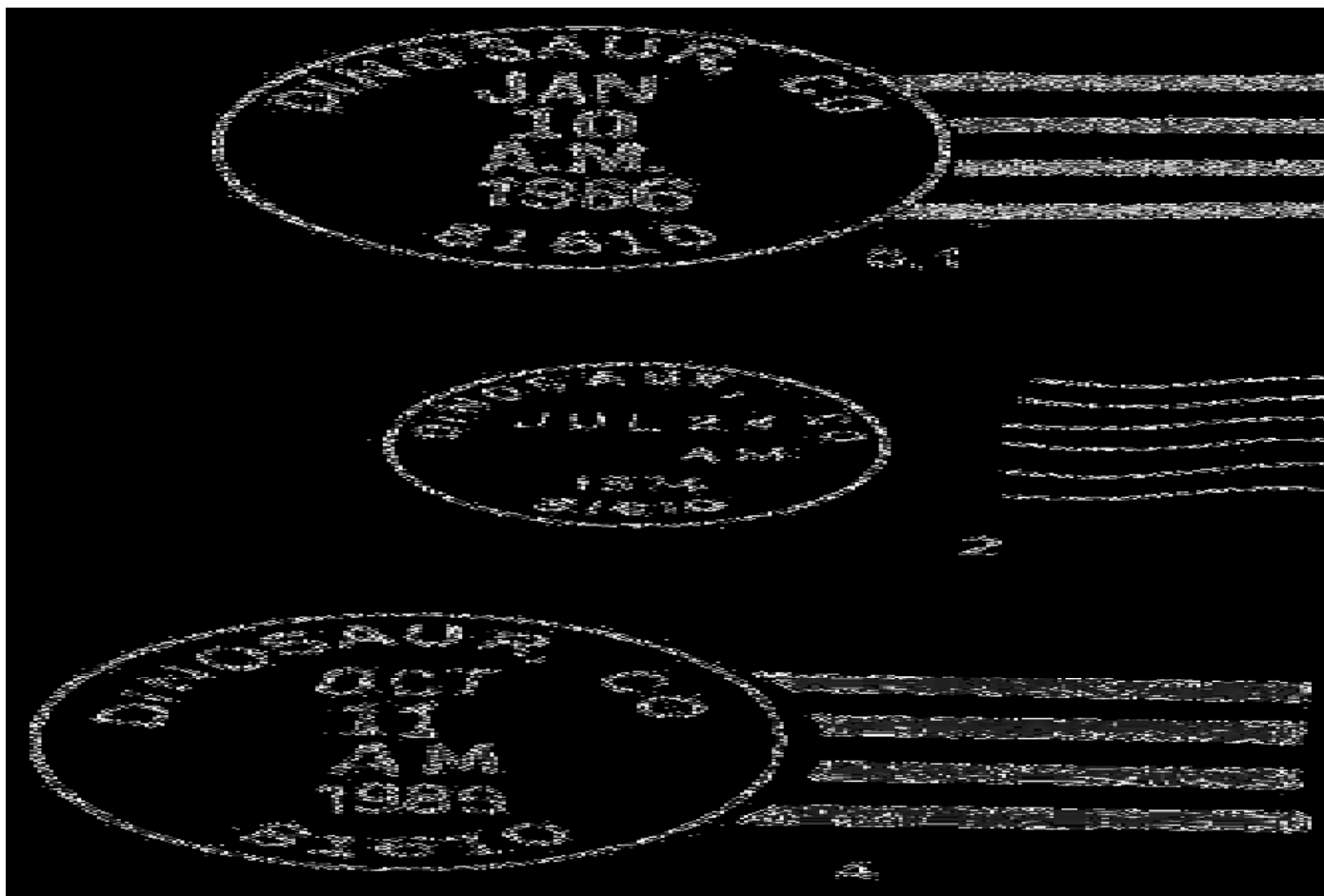
Jan 1 1966	Formerly named Artesia	
Feb 28 1972	Stewart, Mrs. Donna	Officer in charge
Apr 28 1972	Hayes, Mrs. Grace W.	Officer in charge
Jun 24 1972	Hayes, Mrs. Grace W.	Appointed

DINOSAUR – Continued

Jun 24 1972	Hayes, Mrs. Grace W.	Assumed charge
Feb 24 1978	Franklin, Mrs. Phyllis L.	Officer in charge
Jan 13 1979	Westby, Ted E.	Declined appointment
Jun 16 1979	Franklin, Mrs. Phyllis L.	Appointed

Confirmed types of postal markings

0.1	DINOSAUR, CO / 81610 CI 10P 30.0	4bars S-25x20mm	Jan 10 1966
1	DINOSAUR, CO / USPO CI 11P 28.0/18.0	Hstp No killer	May 14 1970 Nov 26 1971
1.1	DINOSAUR, CO / 81610 CI 10P 31.0	4bars S-??x17mm	Nov 6 1967 Nov 26 1971
2	DINOSAUR, CO / 81610 CI 10P 23.0	Mach 7 wavy lines	Jul 24 1974 Mar 20 1987
3	DINOSAUR, CO / 81610 CI 10P 34.0	4bars S-25x20mm	Oct 5 1972 Feb 4 1976
4	DINOSAUR, CO / 81610 CI 10P 34.0	4bars S-25x20mm	May 22 1987 May 26 1993
4.1	DINOSAUR, CO 81610 CI 10P 34.0	4bars S-20x16mm	Apr 8 1988
5	DINOSAUR CO / 81610 CI 10P 33.5	4bars S-25x19mm	Dec 24 1998 Jul 30 2001



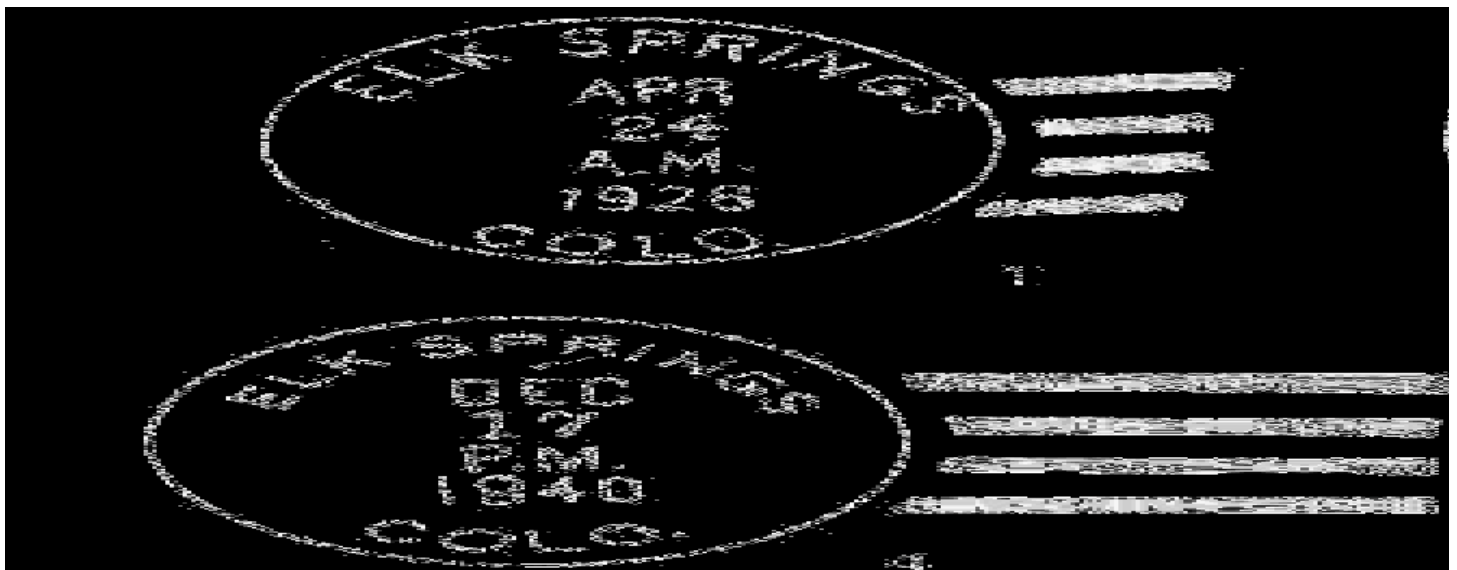
ELK SPRINGS – Continued

Jun 15 1948	Re-established	
Jun 15 1948	Bates, Loran	Acting
Jun 16 1948	Bates, Loran	Assumed charge
May 18 1949	Bates, Loran	Confirmed
Jun 22 1949	Bates, Loran	Commissioned
Dec 12 1949	Herod, Mill Lila Lee	Possession & Acting
Jan 3 1950	Herod, Mill Lila Lee	Acting
Jan 6 1950	Herod, Mill Lila Lee	Appointed
Feb 9 1950	Herod, Mill Lila Lee	Commissioned
Mar 31 1950	Herod, Mill Lila Lee	Possession
Feb 29 1952	Martin, Mrs. Helen Irene	Possession & Acting
Mar 13 1952	Martin, Mrs. Helen Irene	Acting
Aug 18 1952	Martin, Mrs. Helen Irene	Appointed
Nov 3 1952	Martin, Mrs. Helen Irene	Commissioned
Dec 31 1952	Martin, Mrs. Helen Irene	Possession
Dec 17 1965	Johnson, Mrs. Jeri L.	Possession & Acting
May 6 1966	Converted May 6 1966 to a Rural Branch of Craig, later to a Community Post Office	
--- -- 1983	Discontinued	

Confirmed types of postal markings

1	ELK SPRINGS / COLO. 10P 32.0	4bars S-??x18mm	Apr 24 1928
2	ELK SPRINGS / COLO. CI 10P 33.0	4bars S-23x18mm	Oct 15 1932
3	ELK SPRINGS / COLO. CI 10P 33.0	4bars S-23x19mm	Dec 12 1934 Sep 2 1940
4	ELK SPRINGS / COLO. CI 10P 33.0	4bars S-23x18mm	Dec 13 1940 May 10 1943
5	ELK SPRINGS / COLO. CI 10P 33.0	4bars S-24x19mm	Jul 16 1948 Jan 5 1962
6	ELK SPRINGS, CO / 81633 CI 10P 34.0	4bars S-24x20mm	May 6 1966 May 6 1966 Last Day as Independent Post Office

NOTE: There are only minor differences between the pre-Zip code markings of Elk Springs. However, I believe that there were at least five different devices used during that time. The Zip Code device in use on the day of conversion to a Rural Branch, continued in use after the conversion (See Craig).



ELKHEAD

The Elkhead Post Office presents some potential confusion. An office by that name first appeared in 1884 and was closed in 1885. At the time it was in the portion of Routt County that would become Moffat County.

In 1910 the Elkhead Post Office re-opened but at a site within the boundaries of present day Routt County. That office was closed in 1924.

In 1926 the Elkhead Post Office once again re-opened, now at a location in Moffat County and near the original 1884 location.

This site is east of Craig on US 40, about a mile west of the Elkhead River where the highway curves to the southeast. At that point, on the north side of US 40, are a few old buildings and a corral. This appears to be a good choice for the Elkhead location.

The source of the name is the Elkhead River, which originates in the Elkhead Mountains to the northeast of Craig and are primarily in Routt County. Because of its proximity to Craig it is unlikely that this version of Elkhead was more than ranch or roadside post office. It survived for only three years.

Chronology of the Post Office

May 5 1884	---	SE/4 SE/4 Sec 25 T6N R90W 1/2 mile north of the Bear River 1/3 mile east of Elkhead Creek	
Jun 2 1884		Established	
Jun 2 1884		Bennett, Watson P.	
Jan 28 1885		Discontinued Mail to Yampa	
		From 1910 to 1924 the Elkhead Post Office was in Routt County	
Oct 26 1926	---	SW/4 Sec 26 T7N R90W 1 mile north of the Yampa River 1/2 mile west of Elk Head Creek	
Jan 17 1927		Re-established	
Jan 17 1927		Durham, Mrs. Dale	
Sep 1 1928		Crabtree, Margarette	Acting
Sep 6 1928		Crabtree, Margarette	Appointed
Jan 17 1929		Ordered closed	
Jan 31 1929		Discontinued Mail to Craig	

Confirmed types of postal markings

NO POSTAL MARKINGS HAVE BEEN RECORDED FROM ELKHEAD (Moffat County)

ESCALANTE

A persistent search of historical literature has found no reference to an Escalante in Moffat County. The only information is in the Post Office Department records that show it in existence from 1889 to 1893. During this time, only one cover from Escalante has been recorded.

To reach the site from Maybell, drive 14.5 miles northwest on Colorado 318. Turn southwest on Moffat County Road 21-S. This turn is a mile east of the bridge over the Snake River. Three miles on road 21-S will place you in the vicinity reported for Escalante. This is also the vicinity of Oneco which will be discussed later. There is one area with what looks like an old trailer and a large stockpile of hay. This appears reasonable for Escalante, which was 300 yards south of the Little Snake River.

The name Escalante relates to the expedition of Padre Escalante that passed through the area in 1776. It is doubtful that there was a settlement as such. Most likely it was only a ranch that was willing to serve as a local post office in an area lacking an established community.

Chronology of the Post Office

Jun 5 1889	---	SW/4 Sec 1 T7N R98W 300 yards south of the Little Snake River
Sep 18 1889		Established

FORTIFICATION – Continued

Latitude = 40:48:20 North Longitude = 107:32:48 West

Chronology of the Post Office

Dec 18 1882	---	Land has not been sectionized On east side of Fortification Creek
Jan 15 1883		Established
Jan 15 1883		Wallbridge, Joshua
Aug 27 1885		Closed Mail to Dixon, Wyoming
Jan 11 1919	---	NW/4 Sec 19 T9N R90W 200 feet west of Fortification Creek
Apr 18 1919		Re-established
Apr 18 1919		Baker, Charles E.
May 26 1922		Ordered closed
Jun 30 1922		Discontinued Mail to Craig

Confirmed types of postal markings

1	FORTIFICATION, / COLO. CI 10P 32.0	Dec 20 191- 4bars S-??x19mm (poor strike)
---	---------------------------------------	--

**FOUR MILE**

The third and northernmost of the three post office sites on the road from Craig to Baggs, Wyoming was Four Mile. No published historical reference has been found for this place. However, a group of letters posted at Four Mile and at Baggs, Wyoming discusses mining in the area. Thus it seems a reasonable assumption that Four Mile served a short-lived mining district during the late 1890's.

The plotted location for Four Mile is two miles south of the Wyoming State line at the point where a county road from the west intersects Colorado 13. The Colorado Highway Department's Four Mile Shops are here on the east side of the highway. The name is derived from nearby Four Mile Creek, which seems to be four miles south of Baggs.

Chronology of the Post Office

Feb 13 1895	---	SW/4 Sec 20 T12N R91W 4 miles south of the Little Snake River On south side of Four Mile Creek From sketch map, would seem to be just south of a junction of an unnamed creek with Four Mile Creek.
Mar 16 1895		Established
Mar 16 1895		Hinman, Caroline J.
Mar 2 1898		Elias, Harry S.
Jul 24 1899		Discontinued Papers to Baggs, Wyoming

Confirmed types of postal markings

1	FOURMILE / COLO. CI 10P 28.0	May 3 1896 Oct 4 1898 Hstp Target, 3-ring 18mm
---	---------------------------------	---

FOUR MILE – Continued



GREAT DIVIDE

In 1916 Volney Hoggatt, who at the time was the editor of the *Great Divide*, a farm journal published by the Denver Post, initiated the Great Divide Colony. The colony encouraged homesteaders to settle in Moffat and Routt Counties if they had \$1,000 in cash, three graded milch cows and three heavy work horses. Hundreds of settlers were lured to the region to attempt to eke out a living from dry-land farming. The dust-bowl days of the 1930's brought about the failure of the plan, one of the last land booms in the region. Livestock raising is the remaining agricultural activity.

The countryside, as you approach the community from the north on Moffat County Road 7, is rolling hill country, mostly sagebrush covered, some grassland with here and there a lone cottonwood along a water course. A mile to the north of Great Divide is a good overview of the community which today consists of a handful of residences, a few abandoned buildings, a stacked oil rig and a good-sized, freshly painted red building that was likely a store that perhaps held the post office.

The term Great Divide is a reference to the country that lies along the Continental Divide that marks the boundary between Routt and Jackson counties some miles to the east.

The easiest route to Great Divide is northwest from Craig via Moffat County Route 7, on the west side of Craig. It is approximately 26 miles to what remains and after leaving Craig it is the only thing resembling a settlement to be found along Route 7.

Latitude = 40:47:03 North Longitude = 107:50:15 West

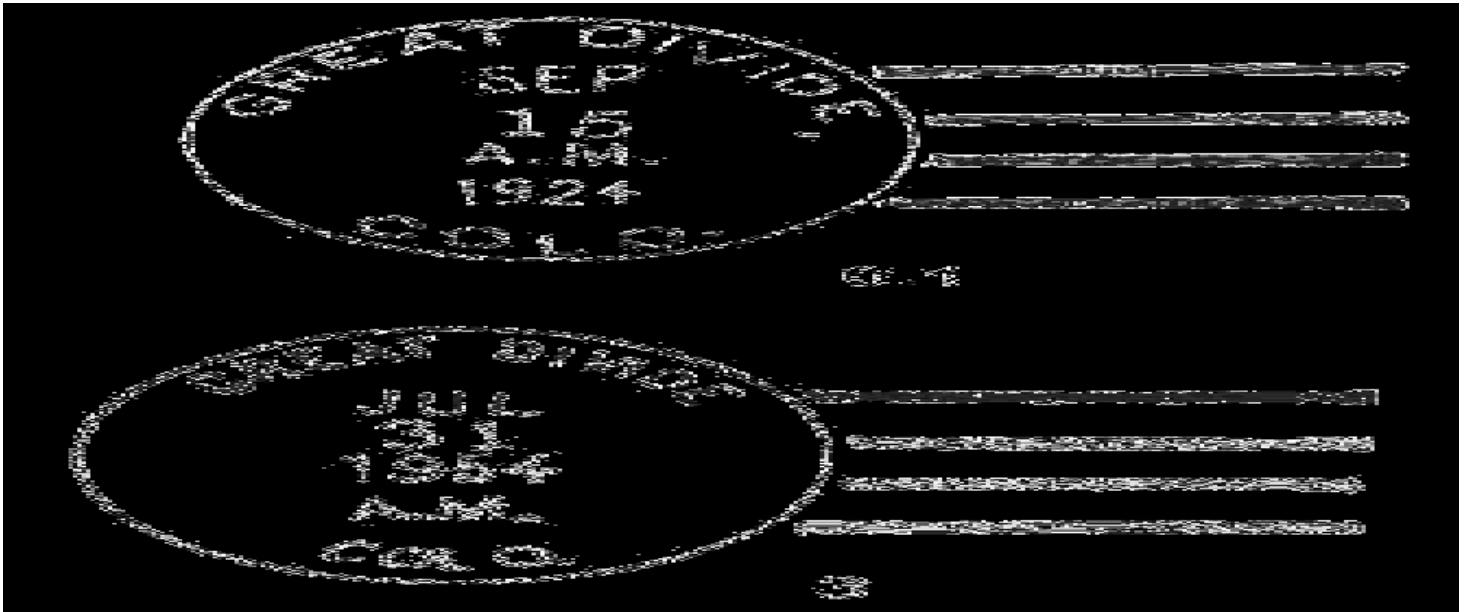
Chronology of the Post Office

Oct 23 1916	---	NW/4 Sec 33 T10N R93W	
Jan 30 1917		Established	
Jan 30 1917		Meyer, Hubert G.	
Nov 6 1917		Harris, Reginald C.	
Aug 31 1918		Crumback, George W.	
Feb 10 1921		Harris, Reginald C.	
Dec 11 1923		Crumback, George W.	Confirmed
Jan 2 1924		Crumback, George W.	Commissioned
Jan 14 1924		Crumback, George W.	Assumed charge
Oct 20 1941	---	NE/4 Sec 33 T10N R93W	
Jul 31 1954		Discontinued	

Confirmed types of postal markings

0.1	GREAT DIVIDE, / COLO. CI 10P 32.0	4bars S-24x19mm	Sep 5 1918	Sep 15 1924
1	GREAT DIVIDE , / COLO. CI 10P 33.0	4bars S-24x20mm	Nov 13 1933	Feb 17 1940
2	GREAT DIVIDE , / COLO. CI 10P 33.0	4bars S-24x20mm, large letters	Jan 3 1941	Jul 29 1949
3	GREAT DIVIDE / COLO. CI 10P 33.0	4bars S-24x19mm, small letters	Feb 29 1952	Jul 31 1954

GREAT DIVIDE – Continued

**GREYSTONE**

Greystone is in the northwestern portion of the county and south of the road from Maybell through Brown Park to Bridgewater, Utah. It is claimed that the first settlement in the area was as early as 1882. However it was not until 1921 that a post office was established and named Greystone by Henry Knealy, the first postmaster. He chose the name for the grey rocks in the vicinity.

During its fifty-four years of existence, the Greystone Post Office was at many distinct locations. From Post Office Department Geographic Site Location Reports I have plotted eight locations in a strip about three miles north-south. The countryside is a mixture of small canyons, timbered ridges and grazing land. There are a number of residences scattered through the area, some inhabited on a permanent basis and others that appear to be summer residences or hunting camps.

I first visited Greystone in 1972 when the post office was still in operation. It was in a small residence on the west side of Moffat County Road 10. When I returned in 1998, all that remained was the slab and the stone chimney on which was nailed a sign Greystone. When I stopped to take pictures, a lady came from a nearby mobile home. She confirmed that the ruins had indeed been the last post office at Greystone and that when the owner moved out, he burned it, much to the disgust of the area residents who considered it to be a community historic site.

To reach Greystone, drive northeast from Maybell on Colorado 318. After crossing the Little Snake River, it is 14.5 miles to Moffat County Road 12. Then six miles to Moffat County Road 10 and finally about two miles south to the stone chimney. Colorado 318 from Maybell also takes you through Sunbeam, past Escalante and Oneco and on to Ladore/Lodore. From that road you can go north to the sites of Sparks and Wallrock near the Wyoming line.

Latitude = 40:36:34 North Longitude = 108:40:24 West

Chronology of the Post Office

Feb 17 1921	---	SW/4 Sec 31 T8N R100W
		Original request as DOUGLAS - Crossed out
Jun 20 1921		Established
Jun 20 1921		Kenealy, Henry T.

GREYSTONE – Continued



Remains of the last post office at Greystone, Colorado
 Photograph by William H. Bauer September 4, 1998

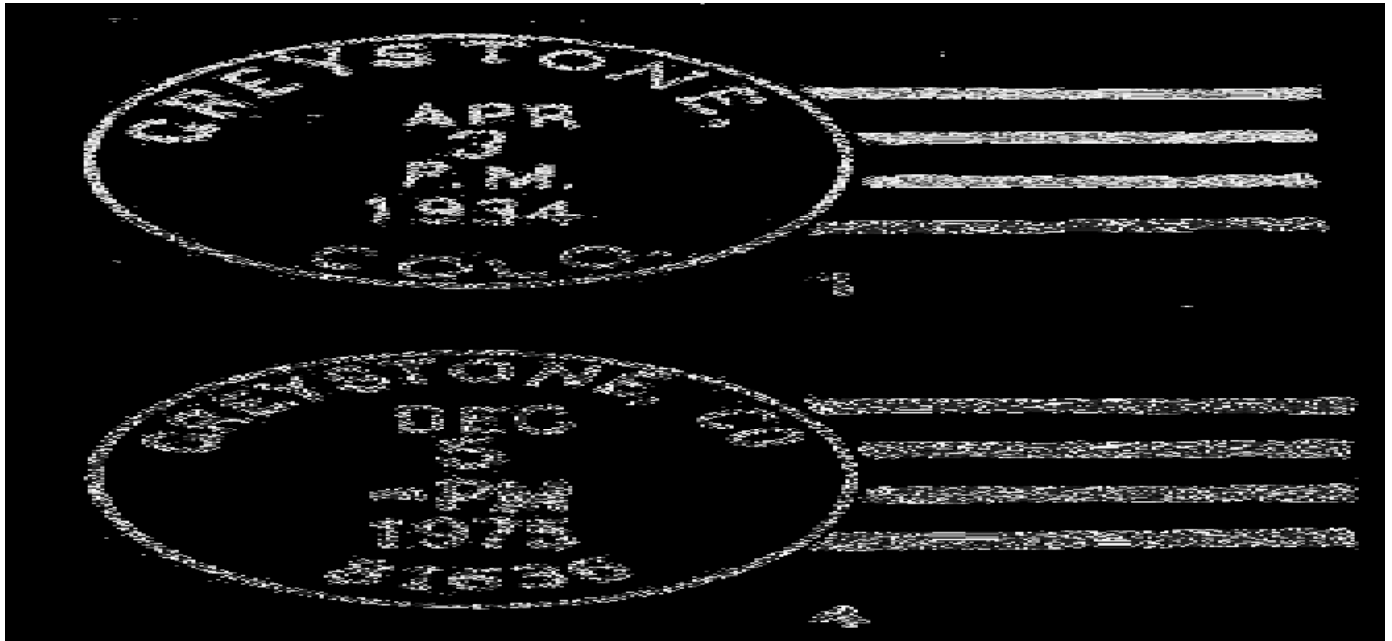
Mar 17 1922	---	NE/4 Sec 6 T7N R100W	
Dec 1 1922		Palmer, George A.	
Jan 19 1924	---	SW/4 NW/4 Sec 5 T7N R100W	Move 3/4 mile east of previous location
Feb 5 1924		Hawkins, Goldie	Possession
Apr 26 1924		Hawkins, Goldie	Acting
Dec 22 1924		Haywood, William F.	
Nov 12 1926	---	NW/4 Sec 24 T8N R100W	(In recent change of site 5 miles north)
Jan 13 1927		Edwards, George H.	
May 31 1927		Edwards, Effie L.	Acting
Dec 28 1927		Edwards, Effie L.	Possession
May 22 1929		Bower, Gladys S.	Acting
May 16 1929		Bower, Gladys S.	Appointed
May 29 1929	---	SW/4 Sec 6 T7N R100W	Move 3 miles south of previous location
Apr 30 1930	---	NE/4 Sec 1 T7N R101W	Move 1/2 mile southwest of previous location
Jul 27 1930		Stone, Mrs. Helen	Possession
Aug 12 1930	---	NE/4 Sec 29 T8N R100W	Move 4-1/2 miles southeast from previous location
Aug 21 1930		Stone, Mrs. Helen	Acting
Nov 12 1930		Stone, Mrs. Helen	Appointed
Jan 27 1931		Stone, Mrs. Helen	Commissioned
May 22 1931	---	E/2 SW/4 Sec 30 T8N R100W	Move 1-1/4 mile south west of previous location
Jul 2 1934		Watson, Mrs. Helen	Name changed by marriage
Jul 2 1935		Holland, George E.	Appointed
Jul 27 1935		Holland, George E.	Commissioned
Aug 2 1935		Holland, George E.	Possession

GREYSTONE – Continued

Nov 10 1935	Holland, George E.	Assumed charge
Nov 20 1935	Holland, George E.	Acting
Oct 20 1941 ---	E/2 SW/4 Sec 30 T8N R100W	
Aug 11 1944	Buffham, Mrs. Helen	Possession
Aug 29 1944	Buffham, Mrs. Helen	Acting
Jan 25 1945	Buffham, Mrs. Helen	Confirmed
Jun 15 1953	Ducey, Mrs. Anna M.	Possession, Acting
Jul 9 1953	Ducey, Mrs. Anna M.	Acting
Jan 22 1954	Ducey, Mrs. Anna M.	Appointed
Mar 29 1954	Ducey, Mrs. Anna M.	Commissioned
Jun 30 1954	Ducey, Mrs. Anna M.	Possession
Oct 9 1975	Ordered closed	
Dec 5 1975	Discontinued Mail to Maybell	

Confirmed types of postal markings

1	GREYSTONE. / COLO. CI 10P 33.0	4bars S-??x19mm	Apr 3 1934 Nov 24 1934
2	GREYSTONE / COLO. CI 10P 33.0	4bars S-23x19mm	Apr 13 1939 Jan 18 1962
3	GREYSTONE / COLO. CI 11P 28.0/18.0	4bars S-25x19mm	Apr 9 1945 Sep 2 1946
4	GREYSTONE, CO / 81636 CI 10P 33.0	4bars S-24x20mm	Aug 19 1969 Dec 5 1975

**HAMILTON**

Hamilton is a small village at the confluence of Mariposa Creek and the Williams Fork River. It was founded in 1885 and named for the early settlers Tom and Riley Hamilton. Ranching and coal mining were the basis of the early economy. The surrounding area is still ranchland with active strip mining for coal and some oil and gas production.

HAMILTON – Continued

Hamilton is thirteen miles south of Craig on Colorado Highway 13, at the junction with Colorado Highway 317 – the road east along the Williams Fork to Pagoda and Pyramid. There is an active post office at Hamilton, a number of residences and a small store. In 1972 the post office was in a store. Now it is a separate building. In the past, the post office was at a location about two miles north on Highway 13 (1911) and in 1914, it appears to have been at a ranch about a mile south of the community on an extension of one of the community streets.

The Colorado Writers Project in *Place Names in Colorado* refers to a post office established October 18, 1884 under the name of Iles Grove. I have a photocopy of a cover bearing a Hamilton postmark and a corner card for the Iles Grove Store / Hamilton, Colorado. It might be that Iles Grove was an early name for what became Hamilton in 1896. There is no official record of an Iles Grove Post Office, however, the Maybell Post Office was established October 14, 1884. Is there a connection or was the Hamilton store a branch of one in Maybell?

Chronology of the Post Office

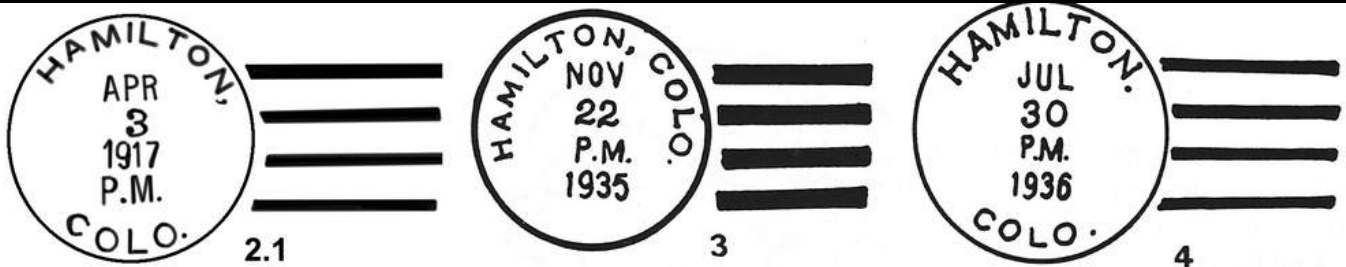
Jun 4 1896	---	SW/4 Sec 21 T5N R91W	
		Proposed postmaster - Joseph B. Johnston	
Jul 7 1896		Established	
Jul 7 1896		Johnston, Joseph B.	
Jun 9 1904		Lawson, George K.	
Dec 24 1906		Hamilton, Antoinette	
Oct 12 1908		Henning, Nona S.	
Feb 27 1911		Pitchford, George	
Apr 19 1911	---	NW/4 Sec 17 T5N R91W	On west side of Williams River
Sep 20 1912	---	From: NW/4 Sec 17 T5N R91W	To: SE/4 Sec 28 T5N R91W
		Move 4 miles southeast of previous location	
Oct 26 1912		Henning, Nona S.	
Apr 24 1914	---	SE/4 Sec 28 T5N R91W	1/2 mile north of Morapos Creek
Jan 19 1917		Wick, Nina D.	
Aug 15 1917		Discontinued Mail to Craig	Closing Order modified to Jul 20 1917
Jun 13 1920	---	SE/4 Sec 21 T5N R91W	About 200 feet west of the Williams Fork
Sep 2 1920		Re-established	
Sep 2 1920		Ottens, Paul	Appointed
Oct 1 1920		Ottens, Paul	Commissioned
Oct 7 1920		Ottens, Paul	Possession
Nov 5 1933		Ottens, Albert	Possession, Acting
Jan 8 1934		Ottens, Albert	Acting
Mar 6 1934		Ottens, Albert	Appointed
Mar 29 1934		Ottens, Albert	Commissioned
Mar 31 1934		Ottens, Albert	Possession
Jan 8 1942	---	Sec 21 T5N R91W	Williams Fork of Bear River 1/8 mile north
Dec 12 1968		Purcell, Mrs. Carol L.	Acting
Jul 17 1971		Purcell, Mrs. Carol L.	Appointed
Jul 17 1971		Purcell, Mrs. Carol L.	Possession

Confirmed types of postal markings

1	HAMILTON / COLO. CI 10P 28.0	Hstp Target	Nov 25 1900 Sep 17 1907
2	HAMILTON / COLO. CI 10P 31.0	4bars S-??x14mm	Sep 30 1910 Dec 10 1910
2.0	HAMILTON, / COLO. CI 10P 31.0	4bars S-??x19mm	Dec 29 1911
2.1	HAMILTON, / COLO. CI 10P 32.5	4bars S-26x19mm	Apr 3 1917

HAMILTON – Continued

3	HAMILTON, / COLO. CI 10P 31.0	4bars P-24x19mm	Mar 27 1931 Nov 22 1935
4	HAMILTON, / COLO. CI 10P 33.0	4bars S-24x19mm	Jul 30 1936 Feb 11 1943
5	HAMILTON / COLO. CI 11P 30.0/19.0	Hstp No killer, slightly distorted	Aug 20 1946 May 21 1955
6	HAMILTON / COLO. CI 10P 33.0	4bars S-24x20mm	Apr 22 1949 Oct 14 1953
7	HAMILTON / COLO. CI 10P 32.0	4bars S-24x20mm	Aug 30 1955 Apr 30 1963
8	HAMILTON, CO / 81638 CI 10P 33.0	4bars S-23x18mm	May 9 1968 Jan 16 1975
9	HAMILTON, CO / 81638 CI 10P 32.0	4bars S-23x18mm	Nov 15 1975 Mar 1 1979
10	HAMILTON, CO / 81638 CI 10P 33.0	4bars S-24x19mm	Jul 24 1992 May 29 1993
11	HAMILTON, CO / 81638 CI 10P 34.0	4bars S-24x19mm	Jul 27 1996



HAMILTON – Continued



HAMILTON STATIONS

HAMILTON - CELEBRATE THE CENTURY STATION

Chronology of the Post Office

Jun 15 2000 Operated as a Special Commemorative Station

Confirmed types of postal markings

- | | | |
|---|---|---|
| 1 | Hamilton, CO 81638 // Celebrate The Century Station | Jun 15 2000 |
| | IR 00R 96.0x34.0 | Pict Text only - CENTENARIAN / -- 100 --
/ The Life of a Century |



HAMILTON - CENTENNIAL STATION

Chronology of the Post Office

Jul 7 1996 Operated as a Special Commemorative Station

Confirmed types of postal markings

- | | | |
|---|---|--|
| 1 | HAMILTON / COLORADO / 81638 :: CENTENNIAL STATION | Jul 7 1996 |
| | IR 00R 95.0x43.0 | Pict Scene - Scroll with livestock and mountains;
Text - 1896 1996 / CENTENNIAL |



JACK RABBIT

The only mention in published literature of this settlement refers to it as being 6 miles north of the modern site of Lay. It is shown on a 1924 map. The Geographic Site Location Reports place it 200 yards west of Lay Creek in the SW/4 Section 21 T-8-N R-93-W. I have visited that location and there is no physical evidence of Jack Rabbit. The site is a small, marshy area along the creek.

You can reach this site by driving 16.5 miles northwest from Craig on Moffat Road 7 (the road to Great Divide) to Moffat Road 17, then about three miles southwest from the intersection.

Chronology of the Post Office

Aug 5 1916	---	SW/4 Sec 21 T8N R93W	200 yards west of Lay Creek
Dec 20 1916		Established	
Dec 20 1916		Blevins, Thomas G.	
Feb 3 1923		Hamontree, Ruby	Acting
May 3 1923		Ordered closed	
May 31 1923		Discontinued	Mail to Lay

Confirmed types of postal markings

1	JACKRABBIT, / COLO.	Dec 23 1921
	CI 10P 30.0	4bars S-??x18mm

**JUNIPER**

This site is located about 8 miles southeast of Maybell, on the flood plain of the Yampa River. In 1906 a post office was established as Juniper; in 1919 the name was changed to Juniper Springs.

Juniper refers to the common juniper, *Juniperus communis* that is indeed a common, indigenous vegetation of the region. The settlement, at the foot of Juniper Mountain, may have first been a ranch but it was also the location of several springs – both hot and cold. With that for an attraction, the nearby river for fishing and the surrounding countryside for hunting, the settlement soon became a resort.

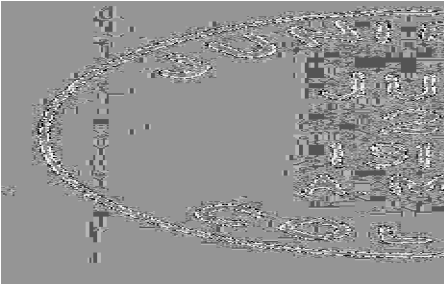
Chronology of the Post Office

Jan 8 1906	---	SW/4 Sec 16 T6N R94W	
Feb 9 1906		Established	
Feb 9 1906		Perkins, Frank L.	
Feb 15 1907		Ranney, Charles A.	
Jul 2 1909	---	SE/4 SW/4 Sec 16 T6N R94W	
Aug 11 1909		McCausland, Catherine M.	
Mar 27 1911		McFarling, Catherine M.	
Apr 28 1911	---	SE/4 SW/4 Sec 16 T6N R94W	On south bank of Bear River
Sep 4 1919		Name changed to Juniper Springs	

Confirmed types of postal markings

1	JUNIPER, / COLO.	Jul 2 1910 Dec 8 1914
	CI 10P 31.0	4bars S-23x13mm

JUNIPER – Continued



JUNIPER SPRINGS

Originally established as Juniper, the name of the resort was changed to Juniper Springs in 1919. See Juniper for the history.

I visited Juniper Springs in September 1998. The main buildings, some guest cabins and the swimming pool are still there, however, they are in growing disrepair.

To reach Juniper Springs from Maybell, go east on US 40. Eight-tenths of a mile east of the Yampa River bridge, turn southeast on Moffat County Road 74 for a distance of four miles to Moffat County Road 53, which crosses the Yampa River to Juniper Springs. If after visiting Juniper Springs, you return to Road 74 and continue east to Road 17 and then down a hill and again cross the river, you will be in the vicinity of the Routt Post Office.

Latitude = 40:28:02 North Longitude = 107:57:11 West



JUNIPER SPRINGS, / COLO.

October 6, 1932

JUNIPER SPRINGS – Continued



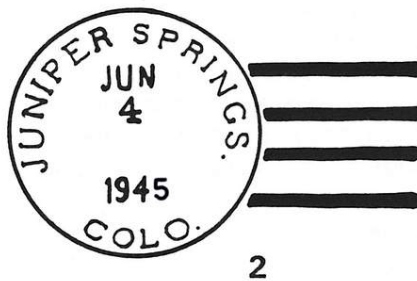
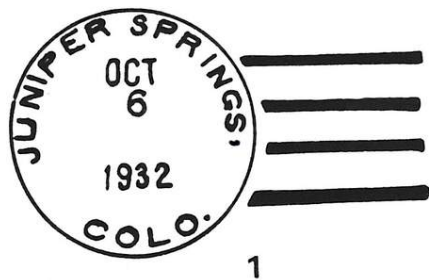
The abandoned motel and its swimming pool at Juniper Springs, Colorado
Photograph by William H. Bauer September 2, 1998

Chronology of the Post Office

Sep 4 1919	Formerly named Juniper	
Sep 4 1919	McFarling, Catherine M.	Confirmed
Jan 23 1920	--- Sec 16 T6N R94W 400 yards south of Yampa or Bear River	
Feb 1 1940	Smalley, Thomas C.	Assumed change
Feb 8 1940	Smalley, Thomas C.	Acting
Jun 5 1940	Smalley, Thomas C.	Confirmed
Jun 29 1940	Smalley, Thomas C.	Commissioned
Oct 31 1941	--- SE/4 Sec 16 T6N R94W Bear or Yampa River north 500 feet	
Sep 30 1946	Discontinued	

Confirmed types of postal markings

1	JUNIPER SPRINGS, / COLO. CI 10P 32.0	4bars S-23x19mm	Sep 18 1922 May 11 1937
2	JUNIPER SPRINGS, / COLO. CI 10P 33.0	4bars S-24x19mm	Sep 24 1940 Jun 4 1945



LADORE

This was the post office for the Brown's Park area. As such it has moved several times, survived a change in spelling (to Lodore) and was finally moved to Utah. Brown's Park is a wide (2-4 miles) valley in which flows the Green River on its curve from Utah through western Moffat County. Much of the park is now a part of the Brown's Park National Wildlife Refuge, which at its southern edge joins Dinosaur National Monument.

Settlement began with cattle ranches and because of the remote location, the area achieved notoriety as a hideout for outlaws and rustlers. Butch Cassidy is reputed to have holed up here. Today there are still cattle ranches in the park but tourism has become an important industry to the area.

From the Post Office Department records, I have plotted four locations for the post office and a fifth location from a map of the area. During my September 1998 visit to Brown's Park, I believe that I identified three of these locations.

To reach Browns Park and the Ladore sites from Maybell, take Colorado 318 northwest for about 45 miles. That will bring you down to the floor of the valley. Continue northwest in the valley to where Moffat County 164 goes south into the Wildlife Refuge. To the north of this intersection and north of the main highway, there is a large, active ranch complex. I believe this to have been the initial site of Ladore in 1888. Two miles east of the intersection another side road leads south, about a mile, to Lodore Hall and the Lodore Cemetery. The hall is well maintained and is on the State Historic Register. In the cemetery is a monument to the fur trade era Fort Davy Crockett. It is quite possible that at some time the Ladore Post Office was located nearby. One and half miles east of the road to Lodore Hall, is a side road north to the Brown's Park Store and campground. In Moffat County this may be the only gas station outside of Craig and north of US 40. A few hundred yards further and beyond the store is another ranch complex that I believe was the site of Ladore in 1915

Back on Colorado 318 and again driving east for another 1.5 miles will bring you to yet another ranch on the north side of the highway and close to the road. This agrees with the plotted site for Ladore in 1922 and would still have been the site in 1924 when the spelling was changed from Ladore to Lodore. Nine years later the Lodore Post Office was moved to Daggett County, Utah.

There has always been confusion in the spelling with Ladore and Lodore having been used interchangeably. The name is derived from the Canyon of Lodore where the Green River turns south from Brown's Park into Dinosaur National Monument. Major John Wesley Powell suggested the name for Robert Southey's poem *How the Water Comes Down at Lodore*. Regardless of how you spell it, this is beautiful country and well worth the long drive from Maybell. Three miles east of the 1922 site is Moffat County Road 10 that will take you north through Irish Canyon and on to Sparks and Wallrock.

Chronology of the Post Office

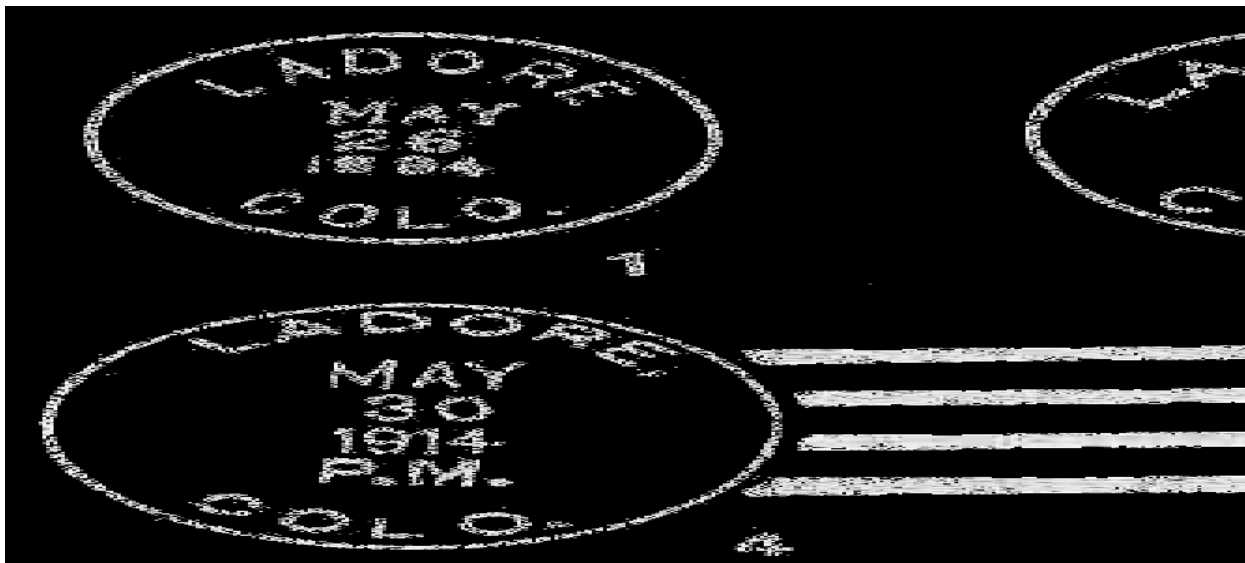
Jun 3 1889	Established
Jun 3 1889	Sears, Charles B.
Jan 8 1890	Bassett, Amos H.
Aug 4 1900	Blair, Elizabeth A.
Mar 24 1904	Bassett, Elbert H.
Oct 17 1904	Miles, Addie
Apr 30 1908 ---	SE/4 Sec 18 T10N R102W On Cove Creek 2 miles north of Green River
	Proposed postmaster - Charles B. Sears
Mar 3 1910	Chew, John H.
Jul 26 1912	Bassett, Elbert
Apr 14 1914	McClure, Willa P.
Jan 30 1915	Willis, Francis M.
Dec 30 1915 ---	NW/4 Sec 34 T10N R102W 1 mile north of Vermillion Creek
	Applicant for postmaster - Willa B. McClure
Feb 26 1916	McClure, Willa B.

LADORE – Continued

Jul 3 1920	Eccles, Mrs. Willa B.	
May 25 1922 ---	NE/4 SW/4 Sec 2 T9N R102W	Move 2 miles east of previous location 1/2 mile north of Vermillion Creek
Jun 7 1922	Cox, Edward C.	Acting
Jul 15 1922	Cox, Edward C.	Appointed
Dec 5 1922 ---	NE/4 Sec 17 T10N R102W	1-1/2 miles north of the Green River 2 miles northwest of Vermillion Creek
Mar 25 1924	Spelling changed to Lodore	Office not listed in 1916 postal guide

Confirmed types of postal markings

1	LADORE / COLO. CI 10P 27.0	Hstp Target, 4-ring 17mm	Apr 21 1894 Apr 6 1897
2	LADORE, / COLO. CI 10P 28.0	Doane Type 2 with 1 S-24x14mm	Mar 29 1906 Mar 21 1909
3	LADORE, / COLO. CI 10P 32.0	4bars S-24x14mm	Dec 30 1910 Nov 6 1911
4	LADORE, / COLO. CI 10P 32.0	4bars S-25x19mm	May 30 1914 Dec 24 1923

**LAY**

In 1880, following the 1879 Meeker Massacre and in order to protect supply trains, soldiers were stationed at various points along the road from Rawlins, Wyoming to Meeker. A Lieutenant McCulloch (or McCullough) gave the name Camp Lay to one such post, supposedly honoring his sweetheart in Chicago, whom he is said to have later married.

After the Ute Indians were moved from Colorado to Utah, the army post at Lay was abandoned. Mary A. Farnham, a spunky widow, obtained the army buildings. One source claims that she operated a post office but her name does not appear in the records of postmaster appointments. After a brief closure in 1892 the office reopened with Allen G. Wallihan as postmaster. He was a noted Colorado wildlife photographer and held the office of postmaster for almost a half century.

The Lay Post Office was another portable one, apparently moving from one building to another. In 1998 the building that was the last site of the post office still stands on the south side of US 40, with the name Lay worked into the shingles of the roof. Lay is 17 miles west of Craig on US 40 and is a small active community with several residences. The surrounding countryside is semi-arid, hilly ranchland.

LAY – Continued

Chronology of the Post Office

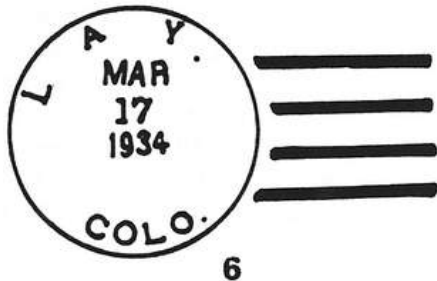
Jul 9 1881	---	Unsurveyed On the east side of Lay Creek 8 miles north of the Bear River The sketch map indicates it to be in the SW/4 Sec 19 T7N R93W	
Aug 1 1881		Established	
Aug 1 1881		Gregory, Albert J.	
Apr 14 1883	---	SW/4 SW/4 Sec 19 T7N R93W On the east side of Lay Creek	
Aug 11 1884		Haley, Ora	
Dec 17 1885		Walliham, A. G.	
Jun 22 1891		Stearly, John	
Jan 7 1892		Discontinued Mail to Craig	
Sep 29 1892		Re-established	
Sep 29 1892		Walliham, Allen G.	Confirmed
Dec 8 1892	---	NE/4 Sec 25 T7N R94W 1/4 mile west of Lay Creek	
Dec 21 1892		Board, John	Order of appointment rescinded Jun 20 1895
Sep 29 1892		Walliham, Allen G.	
Apr 27 1914	---	SW/4 Sec 30 T7N R93W 800 feet west of Lay Creek	
Jan 5 1936		Wilson, Ora L.	Assumed charge
Jan 17 1936		Wilson, Ora L.	Acting
Mar 7 1936		Wilson, Ora L.	Confirmed
Mar 18 1936		Wilson, Ora L.	Commissioned
Oct 25 1941	---	NE/4 Sec 30 T7N R93W 15 feet south of US 40	
Mar 31 1951		Maudlin, Mrs. Anna E.	Assumed charge
Apr 11 1951		Maudlin, Mrs. Anna E.	Acting
May 15 1951		Maudlin, Mrs. Anna E.	Confirmed
Jul 10 1951		Maudlin, Mrs. Anna E.	Commissioned
Aug 3 1962		Converted to a Rural Station of Craig	
Jun 30 1976		Discontinued	

Confirmed types of postal markings

0.1	LAY / COLO. CI 10P 27.0	Hstp Target, 4-ring	Jul 11 1887 Feb 28 1888 Letters wide spaced
1	LAY / COLO. CI 10P 27.0	Hstp Target	Oct 8 1894 Feb 7 1898
2	LAY, / COLO. CI 10P 28.0	Doane Type 2 with 1, S-24x14	Jun 26 1906 May 20 1910
3	LAY, / COLO. CI 10P 32.0	4bars S-23x19mm	May 17 1915 Dec 5 1916
4	LAY. / COLO. CI 10P 32.0	4bars S-23x20mm	Apr 9 1925
5	LAY. / COLO. CI 10P 32.0	4bars S-??x??mm	Jan 3 1929 Jan 31 1931
6	LAY. / COLO. CI 10P 33.0	4bars S-25x20mm (Wide spaced, off-center lettering)	Mar 17 1934 Dec 10 1942
7	LAY / COLO. CI 10P 32.0	4bars S-26x19mm	Jul 12 1948 Oct 30 1959
8	LAY / COLO. CI 10P 31.0	4bars S-23x18mm	May 15 1961 Aug 3 1962
9	LAY / COLO. CI 11P 29.0/19.0	Hstp No Killer	Aug 3 1962



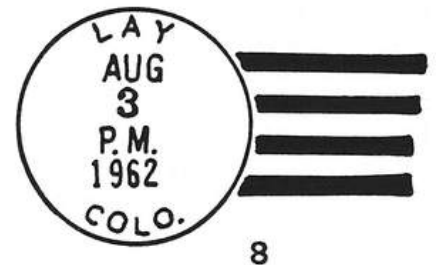
LAY – Continued



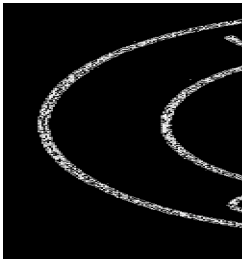
6



7



8



LILY

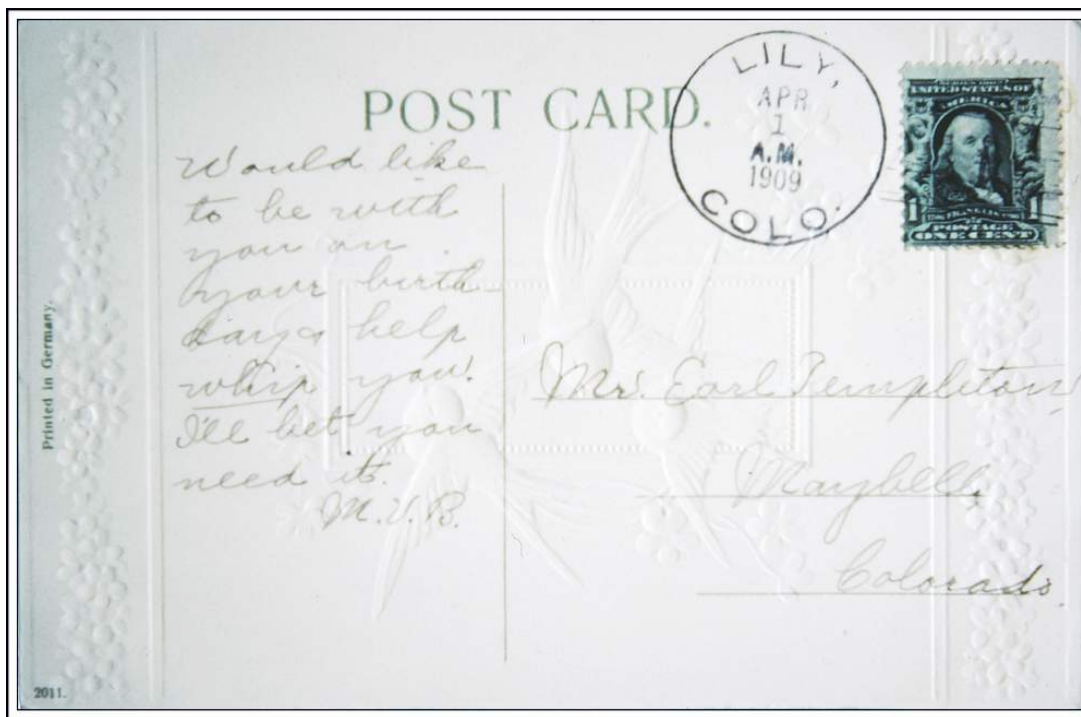
The Colorado Writer's Project attributes the settlement of Lily, or Lily Park as it was first called, to A. G. Wallihan, Mary Farnham and Doc Higgins in 1884. Wallihan's involvement was either short or of minor importance, because by December of 1885 he was the postmaster at Lay where he would live for more than half a century. John W. Lowell, a rancher and the first postmaster, chose the name Lily for the Mariposa Lilies that bloom in the park and on the surrounding hills.

Lily was a farming and ranching community and those remain the principal activities. Like many rural Colorado post offices, the Lily Post Office was at several locations in the Lily Park area. There are scattered ranches in the area but only the 1914 site is still an active operation.

Until recently there was a road almost due north from Elk Springs to Lily Park and the Yampa River. The original (1889) site of Lily plots near the north end of this road and a short distance south of the Yampa River. In 1903 it had moved to a location a short distance north and east of the 1889 site. By 1911 the post office was north of the Yampa (or Bear) River; however, the stated location – Section 28 – must be in error as this is at least a mile south of the river. Perhaps this should be Section 20. By 1914 the office was in Section 17, also north of the river and at or near the ranch still known as Lily Park.

The road from Elk Springs has been closed, probably because it crosses Dinosaur National Monument. Some seven miles east of Elk Springs at mile post 44, on US 40, a paved road goes north 6.5 miles to an intersection with a road that crosses the Yampa River to Lily Park on the north side of the river. The early sites of Lily were about a mile and a half west of the intersection. With a good map that road could take you north to Escalante or northwest to Greystone.

LILY – Continued



LILY, / COLO.

April 1, 1909

Chronology of the Post Office

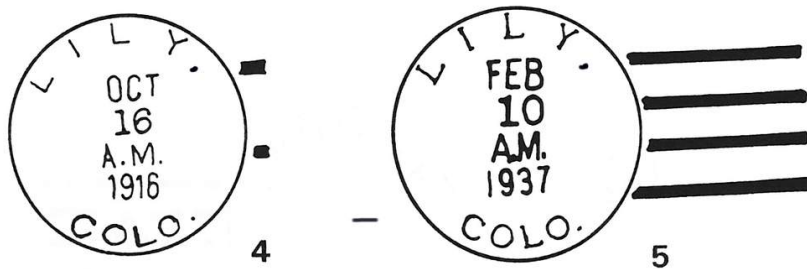
- Jul 10 1889 --- NW/ Sec 31 T6N R98W 40 rods south of the Yampa River
1-1/4 mile south of the Snake River
- Sep 17 1889 Established
- Sep 17 1889 Lowell, John W.
- Dec 8 1892 Brown, James A.
- Jun 12 1895 Lowell, John W. Jr.
- Aug 22 1898 Discontinued Papers to Maybell
- Apr 15 1903 --- NW/4 Sec 30 T6N R98W Within 200 feet of the Bear River, south side
Proposed postmaster - Frank C. Barnes
- Aug 3 1903 Re-established
- Aug 3 1903 Barnes, Frank
- Apr 15 1911 --- SW/4 Sec 28 T6N R98W 1/4 mile north of Bear River 1/4 mile east of Snake River
- Apr 25 1914 --- SW/4 Sec 17 T6N R98W 1/4 mile north of the Bear River
3/4 mile east of the Snake River
- May 7 1937 Ordered closed
- May 15 1937 Discontinued Mail to Cross Mountain

Confirmed types of postal markings

- | | | |
|---|------------------------------|---|
| 1 | LILY / COLO.
CI 10P 27.0 | Sep 7 1894
Hstp Target, 4-ring 15mm |
| 2 | LILY, / COLO.
CI 10P 28.0 | Apr 14 1907 Jun 17 1909
Doane Type 2 with 1, S-24x14 |
| 3 | LILY, / COLO.
CI 10P 32.0 | Dec 22 1912 Nov 12 1914
4bars S-25x14mm |

LILY – Continued

- | | | | |
|---|------------------------------|-----------------|------------------------|
| 4 | LILY, / COLO.
CI 10P 31.5 | 4bars S-??x19mm | Oct 16 1916 |
| 5 | LILY, / COLO.
CI 10P 33.0 | 4bars S-25x20mm | Jan 1 1934 Feb 10 1937 |



LODORE

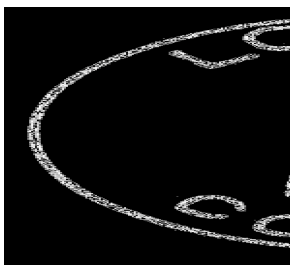
Please refer to Ladore for the history and description of this post office.

Chronology of the Post Office

- | | | |
|-----------------|---|--------------|
| Mar 25 1924 | Formerly spelled Ladore | |
| Jul 7 1922 | Cox, Edward C. | |
| Apr 1 1926 | Grounds, Robert I. | Acting |
| May 3 1926 | Grounds, Robert I. | Appointed |
| Jan 15 1927 | Cox, Edward C. | |
| Aug 8 1928 | Trevenen, Florence | Acting |
| Sep 27 1928 | Trevenen, Florence | Appointed |
| Sep 17 1929 | Callaway, Mrs. Fannie | Acting |
| Oct 19 1929 | Callaway, Mrs. Margaret F. | Confirmed |
| Dec 4 1929 | Callaway, Mrs. Margaret F. | Commissioned |
| Nov 7 1933 | Ordered closed Effective date Nov 30 1933 | |
| May 18 1933[??] | Site moved 10 miles northwest into Daggett County, Utah | |

Confirmed types of postal markings

- | | | | |
|---|--------------------------------|-----------------|-------------|
| 1 | LODORE, / COLO.
CI 10P 32.0 | 4bars S-22x14mm | Nov 13 1924 |
|---|--------------------------------|-----------------|-------------|



LOYD

The Stanolind Oil and Gas Company established Loyd in 1925 to house oil field employees working nearby. The area south of Loyd still produces oil. The community was named for John Loyd, a farmer who originally owned the land.

To reach the site of Loyd, go south from Craig on Colorado 13 and through Hamilton five miles to Moffat County Road 49. According to Post Office Department records the original (1928) site of Loyd was 2.5 miles south on this road. At that distance, there are oil field installations but no residence buildings. In 1936 the post office moved 2-2/3 miles north to a point where Highway 13 crosses Stinking Gulch. The survey descriptions from the records do not fit the physical descriptions for this location; a later (1941) location also seems to be in error. On the north side of the highway there is a grove of cottonwood trees and what appears to be a private picnic ground. Other than the oil field operations there is no other current activity in the immediate area.

Latitude = 40:18:13 North Longitude = 107:42:15 West

Chronology of the Post Office

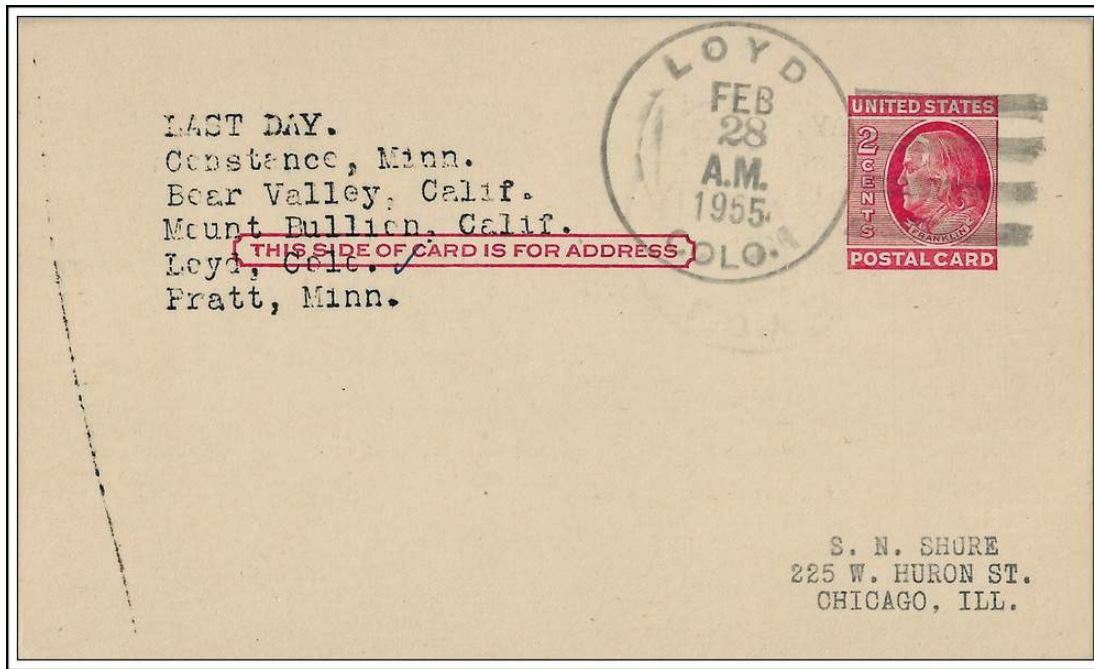
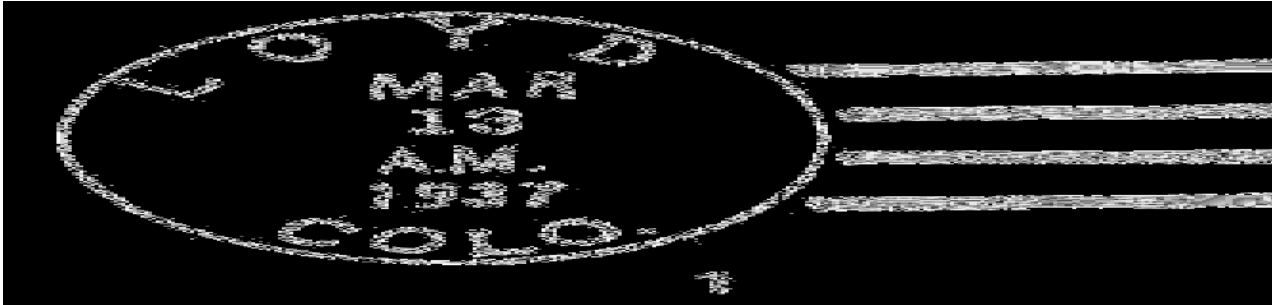
Dec 14 1928	---	SE/4 Sec 21 T4N R92W Applicant for postmaster - Sam Comloy [SRM: Last name is in question. His signature on request for Post Office Site Report seems to be Comloy. In transcription of <i>Appointments of U. S. Postmasters</i> his name is rendered as Comboy]	
Feb 12 1929		Established	
Feb 12 1929		Comboy, Sam	Confirmed
Feb 22 1929		Comboy, Sam	Commissioned
Apr 1 1929		Comloy, Sam	Assumed charge
Dec 18 1935		Spence, Mrs. Lois	Assumed charge
Dec 27 1935		Spence, Mrs. Lois	Acting
May 22 1936		Spence, Mrs. Lois	Confirmed
Jun 4 1936		Spence, Mrs. Lois	Commissioned
Dec 20 1936		Anderson, John Louis Jr.	Confirmed
Jan 15 1936	---	L3, Sec 11 T4N R92W Move 2-2/3 miles northeast of previous location 150 yards north of Stinking Gulch Sketch map shows it where Highway 13 crosses Stinking Gulch. Old site was on Highway 13 in sec 26 SW/4 T3N R93W	
Jan 16 1937		Anderson, John Louis Jr.	Commissioned
Jan 23 1937		Anderson, John Louis Jr.	Assumed charge
Jan 23 1940		Anderson, Mrs. Rose C.	Assumed charge
Feb 1 1940		Anderson, Mrs. Rose C.	Acting
Mar 4 1940		Anderson, Mrs. Rose C.	Confirmed
Apr 8 1940		Anderson, Mrs. Rose C.	Commissioned
Oct 21 1941	---	Sec 16 T4N R92W	
Nov 12 1942		Anderson, Mrs. Sara E.	Assumed charge
Dec 16 1942		Anderson, Mrs. Sara E.	Acting
Dec 3 1943		Anderson, Mrs. Sara E.	Confirmed
Mar 5 1943		Anderson, Mrs. Sara E.	Commissioned
Nov 20 1951		Adams, Mrs. Wilhelmina M.	Assumed charge
Dec 3 1951		Adams, Mrs. Wilhelmina M.	Acting
Jan 5 1952		Adams, Mrs. Wilhelmina M.	Confirmed
Jan 23 1952		Adams, Mrs. Wilhelmina M.	Commissioned
Jan 14 1955		Ordered closed	
Feb 28 1955		Discontinued Mail to Hamilton	

Confirmed types of postal markings

1 LOYD / COLO. Nov 23 1934 Mar 29 1944
 CI 10P 33.0 4bars S-24x19mm

LOYD – Continued

- | | | | |
|---|----------------------------------|-----------------|------------------------|
| 2 | LOYD / COLO.
CI 10P 32.5 | 4bars S-25x18mm | Feb 2 1946 Feb 28 1955 |
| 3 | LOYD / COLO.
CI 11P 30.0/19.0 | Hstp No Killer | Feb 28 1955 |



LOYD / COLO. February 28, 1955 Last Day of Operation postmark

MASSADONA

The only published information on Massadona refers to its presence on maps from at least 1922 to the present. I have no information as to the source of the name.

The site of Massadona is about 19 miles east of Dinosaur, on US 40. There is an operational campground-tavern-store on the south side of the highway.

Chronology of the Post Office

- | | |
|-----------------|--|
| Mar 20 1917 --- | SW/4 NE/4 Sec 8 T3N R100W 300 feet west of Box Elder Creek |
| Jul 10 1917 | Established |
| Jul 10 1917 | Berry, Margaret Cook |
| Oct 15 1932 | Discontinued |

MASSADONA – Continued

Confirmed types of postal markings

1 MASSADONA. / COLO.
CI 10P 32.0

Oct 15 1932

4bars S-25x19mm



MAYBELL

Maybell was the earliest post office in this area of what is now Moffat County. It was established in 1884 at the Bell and Banks Ranch and the name honored May Bell. The 1884 location for Maybell raises some questions, as it is slightly more than ten miles west of present day Maybell which is on US 40. An 1885 map does support this location. To reach this location, from US 40 and the Cross Mountain site I drove 7.5 miles north on Moffat County Road 95, then turned west on a side road one mile to a closed gate. I went through the gate a short distance to a bluff from where I could look down on a large, occupied ranch that appears to be at the proper location. After taking pictures I returned to Road 95 and continued north to Colorado 318 a short distance east of Sunbeam. From Sunbeam it is five miles to present day Maybell.

There is no indication as to why the office moved east to the present location. Most probably it was to be on a more heavily used transportation route.

Between Craig and Dinosaur, Maybell is the largest community along US 40. It has a school, a church, a number of residences and a few small businesses. The post office is north of US 40 on the east side of the park. Maybell was a supply center and is still a modest one for the surrounding ranches; however, I suspect that most trade now goes to Craig. During the early 1950's there was a uranium boom in the area and several strip mines were developed. The mines were not profitable and by 1960 they had been abandoned.

Latitude = 40:31:04 North Longitude = 108:05:11 West

Chronology of the Post Office

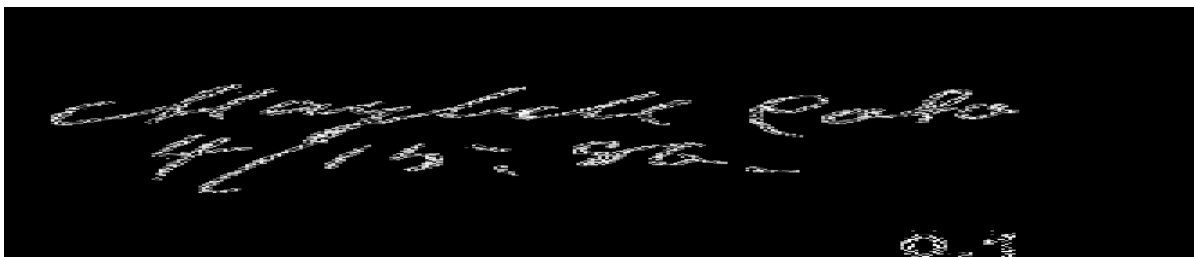
Sep 30 1884	---	NE/4 Sec 4 T6N R97W 1 mile south of Yampa River Sketch map places it in the NE/4 SE/4 Sec 4
Oct 14 1884		Established
Oct 14 1884		Banks, Wilson H.
Sep 21 1888		Templeton, Nellie
Oct 25 1894		Barber, James
Aug 30 1899		Wilcox, Floyd M.
Jun 27 1903		Wagner, Emma E.
Aug 23 1905	---	NW/4 Sec 32 T7N R95W 1-1/4 mile west of Deception Creek
Jun 30 1913	---	NW/4 Sec 32 T7N R95W 1-1/4 mile west of Deception Creek
Nov 11 1913		DeLand, Lewis E.
Apr 25 1914	---	Center Sec 32 T7N R95W (6N crossed out)
Jan 21 1915		Hunt, Muriel L.
Oct 9 1916		DeuPree, Mary A.
Nov 25 1921		Pleasant, Hugh B. Acting

MAYBELL – Continued

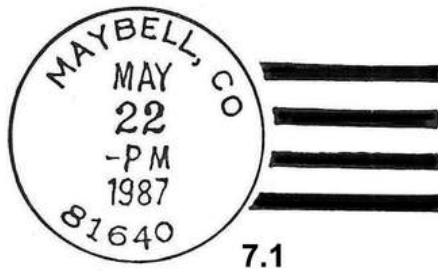
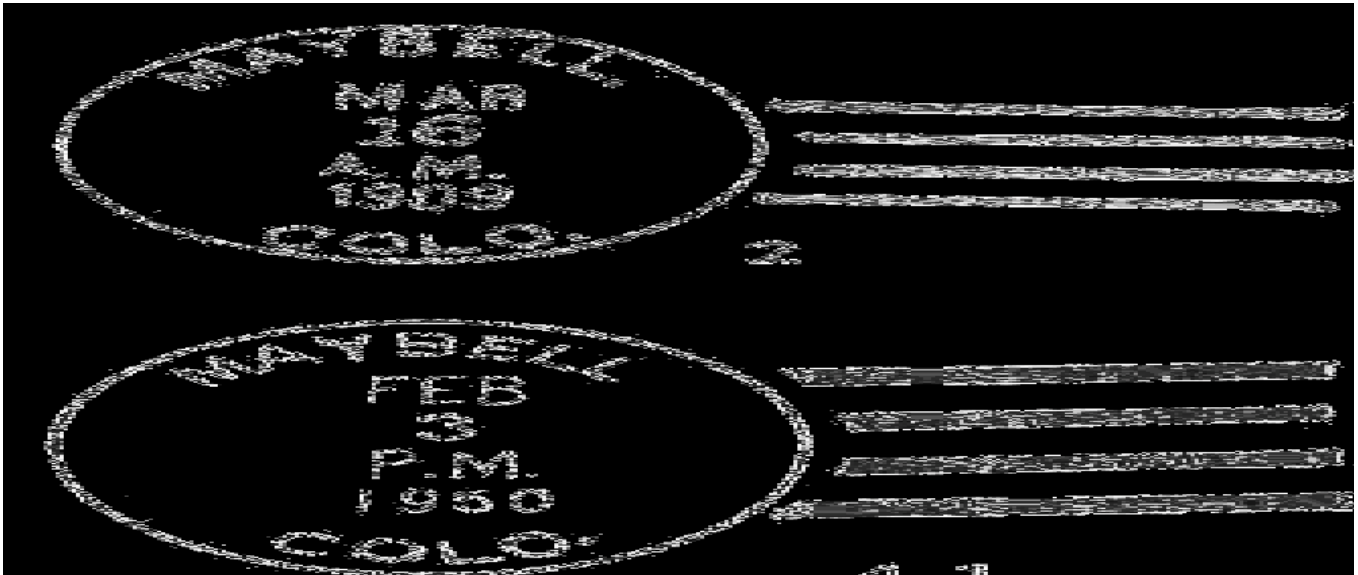
Jan 14 1922	Pleasant, Hugh B.	Appointed
Mar 14 1924	Templeton, Grace W.	Confirmed
Apr 30 1924	Templeton, Grace W.	Commissioned
Oct 20 1941 ---	NW/4 Sec 32 T7N R95W 1 mile north of Yampa River 1-1/2 miles west of Deception Creek	
Sep 15 1945	Buffham, Mrs. Opal M.	Assumed charge
May 24 1946	Corbin, Mrs. Edna Elsie	Assumed charge
Sep 13 1946	Corbin, Mrs. Edna Elsie	Appointed
Oct 14 1946	Corbin, Mrs. Edna Elsie	Commissioned
Oct 23 1946	Corbin, Mrs. Edna Elsie	Possession
Jan 15 1947	Bohrer, Mrs. Mary Matilda	Possession & Acting
Jan 30 1947	Bohrer, Mrs. Mary Matilda	Acting
Mar 22 1948	Bohrer, Mrs. Mary Matilda	Appointed
May 18 1948	Bohrer, Mrs. Mary Matilda	Commissioned
May 24 1948	Bohrer, Mrs. Mary Matilda	Possession
Jul 1 1959		Office advanced
Jul 1 1964		Office relegated
Jul 1 1965		Office made Presidential
Jul 1 1966		Office relegated
Dec 30 1966	Hoth, Mrs. Jayne W.	Possession, Acting
Sep 5 1967	Hoth, Mrs. Jayne W.	Appointed
Sep 8 1967	Hoth, Mrs. Jayne W.	Possession

Confirmed types of postal markings

0.1	MAYBELL COLO MS	Mscp pen cncl	Apr 15 1886
1	MAYBELL / COLO. CI 10P 27.0	Hstp Target, 4-ring	Feb 12 1894 Aug 17 1901 17mm
1.1	MAYBELL / COLO. CI 10P 28.0	Hstp Not present	Mar 12 1900
2	MAYBELL, / COLO. CI 10P 31.0	4bars S-24x14mm	Mar 24 1905 Apr 14 1911
3	MAYBELL / COLO. CI 10P 32.0	4bars S-??x19mm	Apr 22 1912 Apr 8 1920
4	MAYBELL. / COLO. CI 10P 33.0	4bars S-24x20mm	Jan 28 1936 Aug 1 1949
4.1	MAYBELL / COLO. CI 10P 33.0	4bars S-25x20mm	Feb 3 1950 Jul 3 1952
5	MAYBELL / COLO. CI 10P 32.5	4bars S-25x20mm	Apr 8 1959 Oct 15 1962
6	MAYBELL / COLO. CI 10P 33.0	4bars S-25x20mm	Aug 14 1963 Jan 6 1965
7	MAYBELL, CO / 81640 CI 10P 32.0	4bars S-??x20mm	Dec 20 1966 Aug 11 1982
7.1	MAYBELL, CO / 81640 CI 10P 33.0	4bars S-26x19mm	Oct 17 1985 Dec 12 1991
8	MAYBELL CO / 81640 CI 10P 31.0	4bars S-23x17mm	Apr 14 1995 Sep 3 1998
9	MAYBELL CO 81640 / USPS CI 11P 31.0	Hstp No killer	Sep 3 1998 Apr 17 2003



MAYBELL – Continued



MAYBELL STATIONS

BROWNS PARK NATIONAL WILDLIFE REFUGE

Chronology of the Post Office

Mar 15 2003 Operated as a Special Commemorative Station

Confirmed types of postal markings

- 1 Maybell, CO 81640 :: Browns Park National Wildlife Refuge Station Mar 15 2003
CI 10P 20.0 Pict Text only - CELEBRATING A / CENTURY / of
CONSERVATION; with 10 short wavy lines at right

MOBLEY – Continued

Mar 17 1906	Mobley, John C.
Mar 31 1906	Mobley, Julia D.
Dec 3 1906	Ordered closed
Jan 2 1907	Discontinued Mail to Angora

Confirmed types of postal markings

NO POSTMARKS HAVE BEEN RECORDED FROM MOBLEY

MORAPOS

Morapos was an agricultural community along Morapos Creek, for which it was named. One story claims that Morapos is a corruption of Moor Rapids so named by T. H. Iles because the landscape reminded him of the Scottish moors. Another, more likely version, traces the root to the Ute word *murapach* interpreted to mean something big.

Morapos was a community rather than a town; the post office was at several locations, one being south of the line and in Rio Blanco County. To reach this community from Craig, go south on Colorado 13 two miles beyond Hamilton to Moffat County Road 41, the Morapos Creek Road. About six miles from Colorado 13 you will reach the northern edge of the community that spreads south for about three miles and into Rio Blanco County. There are a number of residences and small ranches in the area.

Chronology of the Post Office

No document found in the Moffat County Geographic Site Location Reports

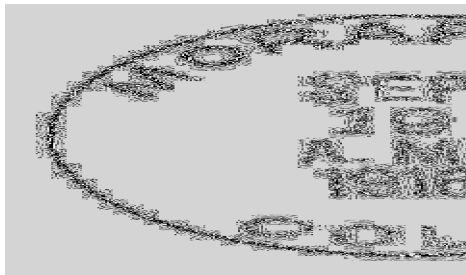
The following locations are from documents filed under Rio Blanco County.

[SRM: A partial reconstruction of the chronology]

Jul 1 1912	---	From: Sec 17 T5N R91W To: SE/4 Sec 4 T3N R91W
Oct 14 1912		E.B. Hilton
Apr 29 1914	---	SE/4 SE/4 Sec 4 T3N R91W 100 feet north of Morapos Creek
Feb 26 1917	---	SW/4 Sec 15 T3N R91W A move 1-1/2 miles south of previous location 200 feet south of Morapos Creek
Mar 10 1917		Blanche Hall
Apr 5 1918		Bertha K. Hadden
Oct 20 1920	---	NW/4 Sec 23 T3N R91W

Confirmed types of postal markings

1	MORAPOS, / COLO.	Dec 16 1913 Sep 19 1916
	CI 10P 32.0	4bars S-25x20mm



MOUNT STREETER

This was a small mining community on Colorado 13 three miles north of the Rio Blanco County line, one mile south of the site of Axial. No structures remain and the Colowyo Coal Mining Company has environmentally reclaimed the area. There are some small settling ponds on the west side of the highway.

I have not found any information on the origin of the name.

MOUNT STREETER – Continued**Chronology of the Post Office**

Aug 20 1919	---	NE/4 Sec 2 T3N R93W 75 yards west of Good Spring Creek	
Dec 26 1919		Established	
Dec 26 1919		Early, Martin	Declined
Mar 9 1920		Fancher, W. Norman	
Nov 15 1921		Discontinued Mail to Axial	

Confirmed types of postal markings

1	MOUNT STREETER / COLO.	Jul 19 1920
	CI 10P 32.0	4bars S-??x19mm

**ONECO**

This was a turn of the century ranch post office on the Little Snake River near the earlier site of Escalante. I have found no information about Oneco other than in the Post Office Department records.

To reach the site, from Maybell drive 14.5 miles northwest on Colorado 318. Turn southwest on Moffat County Road 21S. This turn is a mile east of the bridge over the Little Snake River. Three miles on road 21S will place you in the vicinity reported for Escalante. Oneco was about a half-mile further southwest and 3/4 mile east of the river. That description would place it near the road but there is nothing left to better identify the site.

Chronology of the Post Office

Jun 25 1900	---	NW/4 NE/4 Sec 11 T7N R98W 3/4 mile east of the Little Snake River	
Jul 12 1900		Established	
Jul 12 1900		Trevenen, Flora V.	
Aug 22 1901		Templeton, J. Henry	Not commissioned
Nov 21 1901		Order closed	
Dec 14 1901		Discontinued Papers to Maybell	

Confirmed types of postal markings

NO POSTMARKS HAVE BEEN RECORDED FROM ONECO

PRICE CREEK

The community was named for the small, nearby stream, Price Creek, a tributary of Deep Channel Creek. In turn, Price Creek was named for Benjamin Price, a cattleman who settled here in 1892. In 1998 there was still an occupied ranch at the location and according to the resident, the post office was in a small store which once stood a hundred yards north of the ranch and near the road.

To reach Price Creek, go 28 miles west from Craig on US 40. A mile west of the Yampa River and almost to Maybell, turn south on Moffat County Road 57. It is 19 miles to the site of Price Creek. The Rio Blanco County line is another four miles to the south.

PRICE CREEK – Continued

Latitude = 40:16:38 North Longitude = 108:05:46 West

Chronology of the Post Office

Dec 9 1912	---	SE/4 SW/4 Sec 30 T4N R95W	
May 28 1912		Established	
May 28 1912		Wells, Buck P.	
Mar 2 1914	---	NW/4 Sec 31 T4N R95W 300 feet north of Price Creek	
Jan 3 1916		Van Swearingen, Joseph M.	
Nov 3 1917		Lybyer, Benjamin H.	
Apr 9 1921		Dalrymple, Nellie	
Oct 9 1924		Deming, Grace Q.	Acting
Dec 3 1924		Deming, Grace Q.	Confirmed
Feb 17 1925	---	NW/4 Sec 31 T4N R95W 150 feet south of Price Creek	
Jan 5 1925		Deming, Grace Q.	Commissioned
Mar 31 1925		Deming, Grace Q.	Assumed charge
Jun 26 1937		Hufford, Ross	Assumed charge
Jul 9 1937		Fickle, Mrs. Hilda M.	Assumed charge
Jul 17 1937		Hufford, Ross	Acting
Jul 20 1937		Fickle, Mrs. Hilda M.	Acting
Sep 20 1937		Fickle, Mrs. Hilda M.	Confirmed
Sep 30 1937	---	NW/4 Sec 30 T4N R95W 1-1/2 miles north of Price Creek	
Oct 18 1937		Fickle, Mrs. Hilda M.	Commissioned
Nov 13 1941	---	NW/4 Sec 30 T4N R95W	
Jun 10 1942		Ordered closed	
Jun 30 1942		Discontinued Mail to Meeker	

Confirmed types of postal markings

0.1	PRICE CREEK, / COLO.		Aug 29 1914
	CI 10P 32.0	4bars S-24x19mm	
1	PRICE CREEK / COLO.		Sep 28 1922 Dec 1 1934
	CI 10P 32.0	4bars S-25x19mm	
2	PRICE CREEK / COLO.		Mar 2 1939 Jun 30 1942
	CI 10P 32.0	4bars S-24x19mm	



RIVAS

If it were not for the existence of a single cover, it would be hard to believe that this post office ever existed. As with too many Moffat County communities it has escaped the attention of the students of Moffat County history.

The Post Office Department records do provide a site location. To reach that site, follow the directions to Great Divide and continue north more than 15 miles to the intersection with Moffat County Road 4. Turn east for a little less than 4 miles to Moffat County Road 111, a turn south. The road is little

RIVAS – Continued

more than a bladed track running up the hill. A mile south of Road 4 there is a sharp turn right and a steep drop into an arroyo (no bridge). According to the specifications Rivas was in this area. Other than a couple small scars, nothing that resembles a sign of habitation can be seen; it does not seem a likely place for a ranch. I remain suspicious that it was on the north side of Road 4 and closer to the Little Snake River.

Chronology of the Post Office

Apr 4 1924	---	NW/4 Sec 12 T11N R95W 3/4 mile south of the Little snake River 2 miles south of Powder Wash
Jul 26 1924		Established
Jul 26 1924		Lemmon, Mrs. Ruby E.
Sep 10 1925		Ordered closed
Sep 30 1925		Discontinued Mail to Great Divide

Confirmed types of postal markings

1	RIVAS / COLO. CI 10P 33.0	Sep 25 1925 4bars S-24x19mm
---	------------------------------	--------------------------------

**ROUTT**

This small agricultural community on the Yampa River was named in honor of John L. Routt (1826-1907) who was the final territorial governor and the first state governor of Colorado. There are still several active ranches in the area. The river provides water for irrigation to support hay fields and cattle.

There are two routes by which you can reach the site of Routt. One route has been described under Juniper/Juniper Springs. After visiting Juniper Springs you return to Road 74 and continue east to Road 17. Then drive down a hill, cross the river again and you will be in the vicinity of the Routt Post Office. The second route is to drive south from Lay on Moffat County Road 17 some five miles to the bridge across the Yampa River. One site of Routt plots north of the river and two others plot on the south side of the river. At the time I was there in 1998, the bridge was closed for repairs so I could not get to the southern sites. The northern site appears to be where there is a residence on a bluff above the river.

Chronology of the Post Office

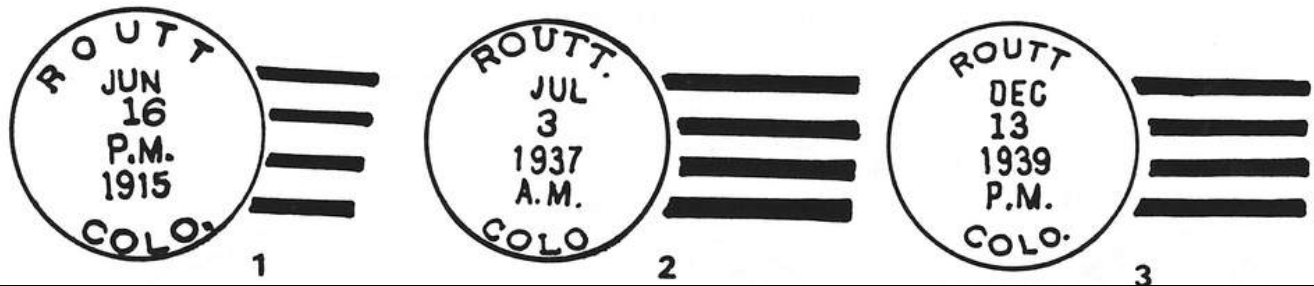
Sep 18 1884	---	SE/4 Sec 25 T6N R94W 1/? mile south of Yampa River SRM: All site reports filed in Routt County
Oct 3 1884		Established
Oct 3 1884		Phalon, John A.
Apr 9 1886		Bennett, W. S.
Jan 11 1887		Discontinued Papers to Axial
Mar 26 1888	---	SE/4 Sec 26 T6N R94W 1/4 mile south of Yampa River
Apr 23 1888		Re-established
Apr 23 1888		Bennett, Elisha

ROUTT – Continued

Sep 11 1889 Discontinued Papers to Lay
 Oct 13 1890 --- SW/4 Sec 23 T6N R94W 1/4 mile north of Yampa River
 Nov 25 1890 Re-established
 Nov 25 1890 Toney, Mary E.
 Mar 22 1892 Discontinued Mail to Axial

Confirmed types of postal markings

- | | | | |
|---|------------------------------------|-----------------|-------------------------|
| 1 | ROUTT / COLO.
CI 10P 33.0 | 4bars S-??x20mm | Jun 16 1915 |
| 2 | ROUTT. / COLO.
CI 10P 32.0 | 4bars S-24x19mm | Apr 27 1932 Jul 3 1937 |
| 3 | ROUTT / COLO.
CI 10P 33.0 | 4bars S-23x18mm | Mar 25 1939 Jul 19 1949 |
| 4 | ROUTT / COLO.
CI 10P 34.0 4bars | S-25x19mm | Apr 25 1951 Mar 31 1953 |



SKULL CREEK

Legend has it that a human skull was found in a nearby creek and that incident gave a name to the creek and later to a small settlement along what became US 40. The community was begun in 1919 by W. T. East; although it helped supply nearby ranchers, it was more of a resort for big game hunters in northwestern Colorado.

Skull Creek was two miles west of Massadona on US 40. Unfortunately, recent reconstruction of the highway has removed all signs. I have a vague recollection that here in 1972 there were still the remains of a building that had burned.

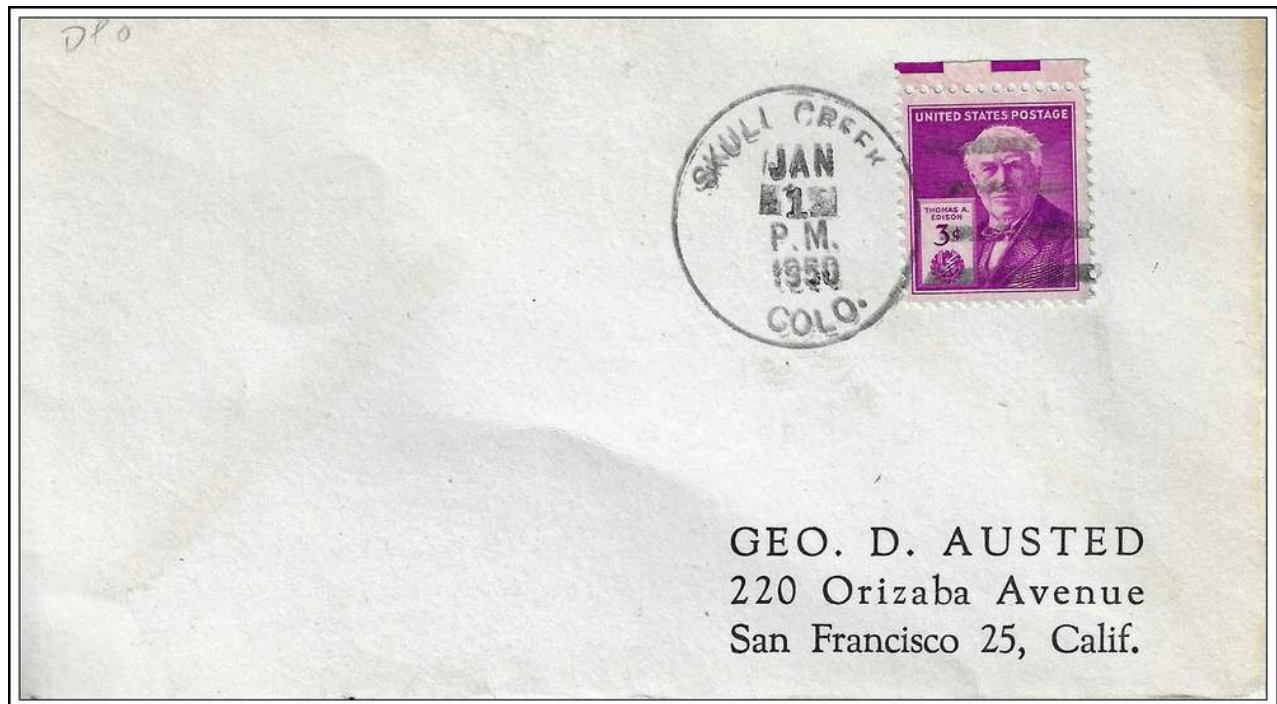
Latitude = 40:15:58 North Longitude = 108:40:20 West

Chronology of the Post Office

Dec 28 1928 ---	Lot 1 Sec 1 T3N R101W 1/4 mile east of Skull Creek	
Feb 8 1929	Established	
Feb 8 1929	East, William T.	Confirmed
Apr 5 1929	East, William T.	Commissioned

SKULL CREEK – Continued

Apr 19 1929	East, William T.	Assumed charge
Jan 25 1937 ---	SW/4 Sec 5 T3N R100W A move 1-1/4 miles southeast 300 yards west of Box Elder Creek	
Feb 2 1937	Kitchens, George T.	Acting
Feb 5 1937	Kitchens, George T.	Assumed charge
Apr 8 1937	Kitchens, Mrs. Mary	Assumed charge
Apr 13 1937	Kitchens, Mrs. Mary	Acting
May 1 1937	Kitchens, Mrs. Mary	Confirmed
May 14 1937	Kitchens, Mrs. Mary	Commissioned
Apr 9 1942	Steele, Mrs. Violet G.	Assumed charge
Apr 18 1942	Steele, Mrs. Violet G.	Acting
Dec 19 1942	Steele, Mrs. Violet G.	Confirmed
Jan 9 1943	Steele, Mrs. Violet G.	Commissioned
Sep 6 1944	Kitchens, Mrs. Mary	Assumed charge
Sep 22 1944	Kitchens, Mrs. Mary	Acting
Jun 4 1945	Kitchens, Mrs. Mary	Confirmed
Aug 3 1945	Kitchens, Mrs. Mary	Commissioned
Dec 22 1945	Morgan, Mrs. Sue	Assumed charge
Mar 4 1946 ---	NE/4 Sec 1 T3N R101W A move 2 miles west of previous location	
May 8 1946	Morgan, Mrs. Sue	Confirmed
Jun 11 1946	Morgan, Mrs. Sue	Commissioned
Jun 30 1948 ---	NE/4 Sec 8 T3N R102W US 40 1000 feet north State 387 50 feet east A move of post office 10.6 miles west of old site	
Jul 1 1948	Warner, James S.	Assumed charge
Sep 24 1948 ---	NE/4 Sec 8 T3N R102W Corner of Gallup and Elm Locality known as Blue Mountain	
Mar 4 1949	Warner, James S.	Confirmed
Mar 28 1949	Warner, James S.	Commissioned
Sep 1 1949	Name changed to Blue Mountain	

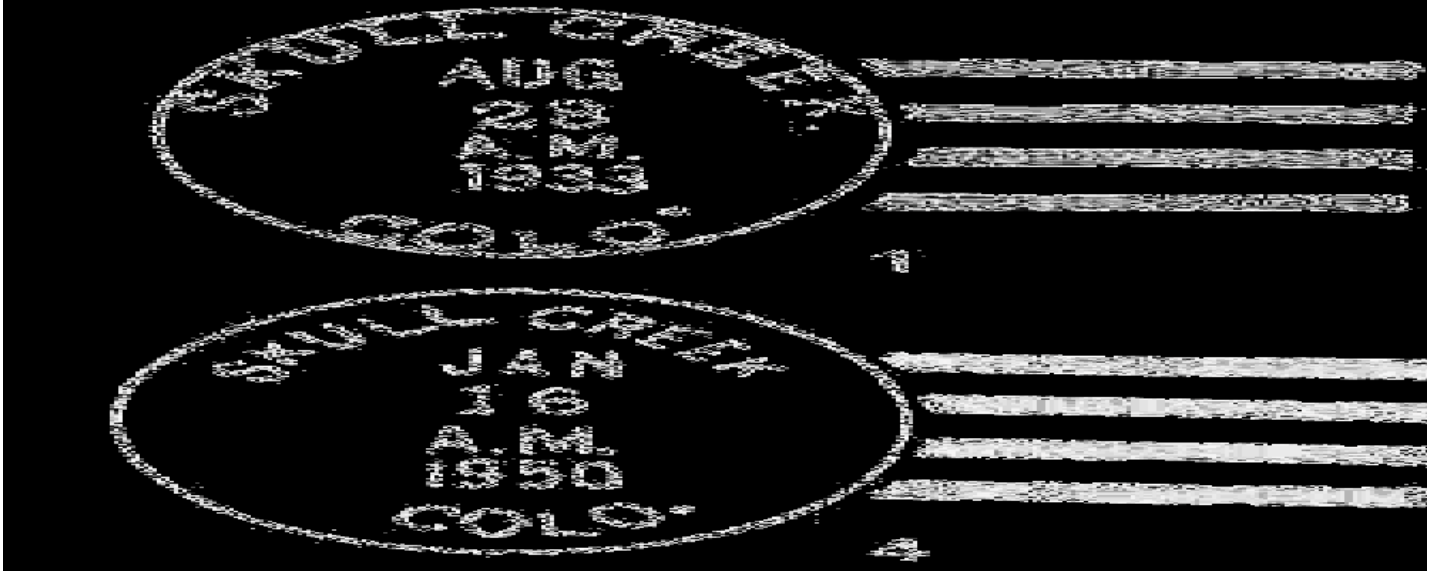


SKULL CREEK / COLO. January 16, 1950 Last Day of this post office name

SKULL CREEK – Continued

Confirmed types of postal markings

1	SKULL CREEK, / COLO. CI 10P 32.0	4bars S-24x19mm	Aug 28 1933 Mar 1 1937
2	SKULL CREEK / COLO. CI 10P 33.0	4bars S-??x??mm (Broad letters)	May 18 1938 Jan 2 1946
3	SKULL CREEK / COLO. CI 10P 33.0	4bars S-23x19mm (Short, narrow letters)	Feb 15 1947
4	SKULL CREEK, / COLO. CI 10P 34.0	4bars S-23x19mm, (taller narrow letters)	Jan 16 1950 Jan 16 1950



SLATER

Bill Slater with Bob Dixon and Bibleback Brown first explored the area in the early 1860’s. He did not stay long in the area but gave his name to Slater Creek and later to the community of Slater. Other reports claim that Bill Slater was a trapper who settled there in 1876. The settlement has served a large ranching area as a supply center. There was also some mining in the vicinity, principally lead and silver with some copper and gold.

The post office was established in Wyoming but in 1888 moved a very short distance south into Colorado to the general store run by Robert McIntosh. McIntosh became the postmaster and served until his death in 1918 when his daughter took over. She was postmaster until 1952, thus the family served Slater for 64 years.

To reach Slater, drive north from Craig on Colorado 13 to Baggs Wyoming. From Baggs, drive east on Wyoming Route 70 to Slater. Another route is to drive north from Steamboat Springs through Clark, Hahns Peak and Columbine and down to the Little Snake River, following it west to Slater. A variant on this is a loop west from Steamboat Springs to Craig then north and back through Hahns Peak to Steamboat Springs. This makes an interesting day trip with a number of other post office sites along the way on US 40, Colorado 13 and to the east of Slater.

Chronology of the Post Office

Jan 5 1886 --- NE/4 Sec 16 T12N R89W 1/4 mile north of the Snake River
1/2 mile north of Slater Creek This was a move south, from
Wyoming into Colorado From: SW/4 Sec 9 T13N R89W To: NE/4 Sec 16 T12N R89W
Note: The distance to move the P.O. is 1/4 of a mile
In Wyoming, the township does not correspond with Colorado.

SLATER – Continued

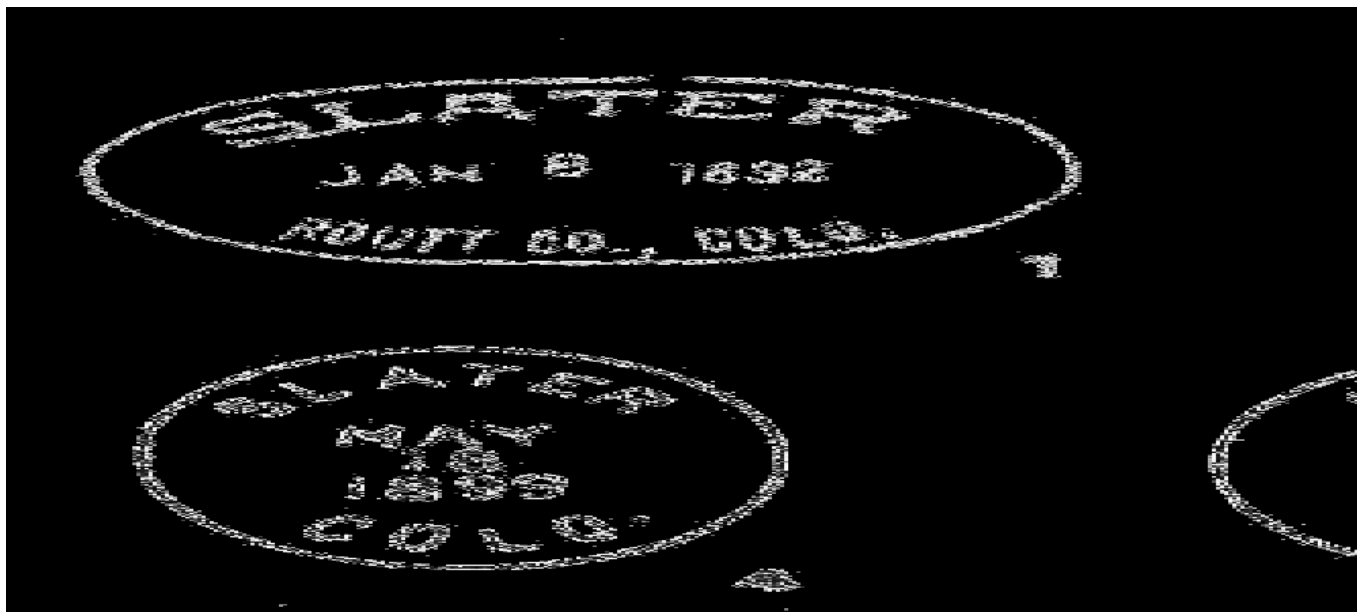
Dec 24 1888	Transferred to Colorado	
Dec 24 1888	McIntosh, Robert	
May 22 1913 ---	NE/4 Sec 16 T12N R89W 1/3 mile north of Little Snake River	
Apr 24 1914 ---	NE/4 Sec 16 T12N R89W 1/8 mile north of Little Snake River	
Jul 8 1915	Malmberg, Ernest P.	
Feb 9 1920	Toole, Arthur W.	
Mar 22 1923	McIntosh, Mildred	Possession & Acting
Mar 28 1923	McIntosh, Mildred	Acting
Dec 18 1935	Kessler, Homer	Acting
Dec 21 1935	Kessler, Homer	Assumed charge
Feb 20 1936 ---	NW/ Sec 16 T12N R89W Move 3/8 mile west of previous site	
Jul 1 1936	Kessler, Homer	Confirmed
Sep 8 1936	Kessler, Homer	Commissioned
Apr 13 1937	Kessler, Mrs. Etta	Assumed charge
Apr 20 1937	Kessler, Mrs. Etta	Acting
Nov 30 1937	Kessler, Mrs. Etta	Commissioned
Oct 14 1939	Murphy, Louis H.	Assumed charge
Oct 27 1939	Murphy, Louis H.	Acting
Nov 7 1939	Murphy, Louis H.	Confirmed
Nov 29 1939	Murphy, Louis H.	Commissioned
Nov 20 1941 ---	T16N R89W Little Snake River 1/2 mile south of office Sketch map shows it to be in the SE/4 NW/4 Sec 16 T12N R89W	
Jan 31 1948 ---	T12N R89W A move 1/2 mile east of previous site Little Snake River 1/2 mile south	
Jan 31 1948	McIntosh, Miss Mildred	Assumed charge
Jul 29 1949	McIntosh, Miss Mildred	Confirmed
Sep 23 1949	McIntosh, Miss Mildred	Commissioned
Apr 15 1952	Humphrey, Mrs. Ollie Mae	Assumed charge
Jun 18 1952	Humphrey, Mrs. Ollie Mae	Acting
Aug 15 1952	Golden, Mrs. Eva E.	Assumed charge
Aug 28 1952	Golden, Mrs. Eva E.	Acting
Dec 31 1952	Golden, Mrs. Eva E.	Confirmed
Jul 30 1953	Golden, Mrs. Eva E.	Commissioned
Sep 30 1953	Golden, Mrs. Eva E.	Possession
Dec 11 1959	Williams, Mrs. Eva E.	Assumed charge
Jul 28 1960	Williams, Mrs. Eva E.	Commissioned
Aug 5 1960	Williams, Mrs. Eva E.	Possession
Sep 28 1973	Gallenbeck, Mrs. Elizabeth L.	Officer in charge
Jan 26 1974	Gallenbeck, Mrs. Elizabeth L.	Appointed

Confirmed types of postal markings

1	SLATER / ROUTT CO., COLO. OV 10P 44.0x25.0	Hstp Target, 4-ring 17mm	Jan 8 1892 Jul 21 1898
2	SLATER / COLO. CI 10P 28.0	Hstp Target, 4-ring	Jun -1 1888
3	SLATER, / ROUTT CO., COLO. CI 10P 32.5	Hstp Target, 4-ring in black	Mar 25 1895 Mar 24 1905
4	SLATER / COLO. CI 10P 28.0	Hstp Target, 4-ring	Nov 22 1898 May 18 1899
5	SLATER / COLO. CI 10P 30.0	Dplx Grid, 9-bar oval	Mar 11 1910
6	SLATER, / COLO. CI 10P 33.0	4bars S-25x20mm	Sep 24 1914 Dec 20 1927
6.1	SLATER, / COLO. CI 10P 33.0	4bars S-25x20mm	Aug 17 1916

SLATER – Continued

7	SLATER, COLO. CI 10P 31.0	4bars P-23x20mm	Oct 12 1931 Sep 28 1951
7.1	SLATER, COLO CI 11P 28.0/18.0	Hstp, No killer	Feb 2 1947
8	SLATER / COLO. CI 10P 33.0	4bars S-23x20mm	Apr 6 1959 Jan 6 1963
8.1	SLATER, CO / 81653 CI 10P 34.0	4bars S-24x20mm	Jul 26 1969
9	SLATER, CO / 81653 CI 10P 32.0	4bars S-25x20mm	Oct 6 1972 Jun 30 1977
10	SLATER, CO / 81653 CI 10P 32.0	4bars S-25x20mm	Sep 12 1973 Apr 4 1990
10.1	SLATER, CO / USPO CI 11P 29.0/19.0	Hstp No Killer	Apr 4 1990 Distorted oval
11	SLATER CO / USPS CI 11P 29.5/18.0	Hstp No killer	Jun 7 1996 Jun 29, 2000
12	SLATER CO / 81653 CI 10P 32.0	4bars S-25x19mm	Jun 7 1996



SLATER – Continued



SPARKS

Sparks has been described as a small community north of Dinosaur Monument and south of Diamond Peak.

In September 1998, after visiting Browns Park, I drove north, from Colorado 318, twenty-two miles on Moffat County Road 10 to Moffat County Road 94 then turned west up a small valley on this dead end road. The valley is about a half mile wide and irrigated; the road quickly deteriorated and I soon wondered if there would be anything to be seen when I reached the end. At three miles from Road 10 I rounded a bluff and received a shock. Ahead of me were a well-kept large two-story building and a big barn and a modern home. This is, or was Sparks. It appears to have been, and to still be, a summer guest ranch probably also serving as a hunting lodge in the fall season.

Chronology of the Post Office

Aug 15 1913	---	NW/4 SW/4 Sec 12 T11N R102W 1/2 mile north of Talamantis Creek Applicant for postmaster - Mrs. Eva M. Sparks
Nov 26 1913		Established
Nov 26 1913		Sparks, Eva M.
May 18 1914	---	NW/cnrs of NE/4 SW/4 Sec 12 T11N R102W 150 yards north of Talamantis Creek
Aug 15 1914		Discontinued Mail to Rock Springs, Wyoming

Confirmed types of postal markings

NO POSTMARKS HAVE BEEN RECORDED FROM SPARKS

SUNBEAM

The commonly accepted story attributes the name of Sunbeam to a farmer, N.C. Bonivee who claimed that the sun shone more brightly on this particular spot than anywhere else in the valley. Sunbeam was a small village that served ranchers and farmers in an area along the Yampa River. It is still a community with a number of homes and a few older buildings but no active businesses.

Sunbeam is six miles northwest of Maybell on Colorado 318. It is marked and easy to find.

Latitude = 40:33:03 North Longitude = 108:11:43 West

SUNBEAM – Continued

Chronology of the Post Office

Oct 1 1912	Established	
Oct 1 1912	Showers, Lewis O.	
Dec 30 1912	-- NW/4 NE/4 Sec 20 T7N R96W	
Mar 26 1914	Gram, Jeanette T.	
Apr 25 1914	--- SE/4 Sec 17 T7N R96W	250 feet north of Yampa River
Mar 31 1915	White, Louise F.	
Jul 1 1915	Chase, Williston G.	
Nov 3 1917	Campbell, Roy N.	Declined
Mar 9 1918	Chase, Warren B.	
Jun 16 1919	Morea, Carl O.	
Nov 3 1920	Handyside, Beatrice	
--- -- ----	Townsend, Mrs. B. H.	Name changed by marriage
Mar 6 1924	Sellers, Albert	Acting
Mar 12 1924	--- NE/4 NW/4 Sec 20 T7N R96W	A move 200 feet east of previous location 200 yards north of Yampa or Bear River
Jun 12 1924	Sellers, Albert	Appointed
Apr 18 1926	Cox, Edward C.	
Sep 27 1926	Townsend, Beatrice H.	Confirmed
Oct 12 1926	Townsend, Beatrice H.	Commissioned
Oct 20 1926	Townsend, Beatrice H.	Assumed charge
Oct 21 1941	--- NE/4 Sec 20 T7N R96W	Yampa River 200 feet south
Feb 10 1942	Callaway, Mrs. Margaret F.	Assumed charge
Feb 21 1942	Callaway, Mrs. Margaret F.	Acting
Jun 9 1942	Ordered closed	
Jun 15 1942	Discontinued	Mail to Maybell

Confirmed types of postal markings

1	SUNBEAM, / COLO. CI 10P 32.0	4bars S-24x18mm	Feb 8 1916 May 20 1920
2	SUNBEAM / COLO. CI 10P 31.5	4bars S-25x18mm	Dec 24 1925 Aug 15 1927
3	SUNBEAM, / COLO. CI 10P 33.0	4bars S-24x20mm	Jun 25 1934 Jul 19 1940



WALLROCK

Prior to July 29, 1902 the Wallrock Post Office was located in Sweetwater County, Wyoming. It was moved south 2-1/2 miles into Colorado to a location on Fonce Wash. The area is semi-arid, sagebrush-covered hills climbing higher to mountains in the west. There is no evidence that this was anything more than a ranch post office to serve a few nearby ranches. Today the area is virtually deserted. The name apparently refers to a geological formation near the original site in Wyoming.

WALLROCK – Continued

To reach the site, continue north from the road (94) to Sparks an additional five miles to Moffat County Road 167. Turn west. At 2-1/2 miles you reach a fork in the road. Go left down the hill and continue to the end of the road. At this point there is a small, artificial pond and at the north end of the dam, a spring and a few remnants of a building of some sort. As best I can determine this was the site of Wallrock.

Chronology of the Post Office

Jul 29 1902	Transferred to Colorado
Jul 29 1902	Nevin, Christopher
Aug 25 1902 ---	SE/4 Sec 26 T12N R102W
Jun 5 1903	Ordered closed
Jun 30 1903	Discontinued Papers to Ladore

Confirmed types of postal markings

NO POSTMARKS HAVE BEEN RECORDED FROM WALLROCK

WINDSOR

On 1887 maps, Windsor is shown to be at the location of what became Craig. However, the Post Office Department Site Location Reports place it south of Craig on the north side of the Yampa River. To reach the site, drive south out of Craig on Colorado 394. Just north of the river there is a large, old ranch on the east side of the road that seems to be the most logical site for Windsor.

The Windsor Post Office was the first in this area, lasting from 1877 until 1880. It was one of the initial settlements in the Craig area but no description of it has been recorded. The only thing certain is that the area was prime agricultural land that would grow and prosper.

Chronology of the Post Office

Apr 5 1877 ---	Unsurveyed 1/4 mile north of the Bear River 80 rods east of Fortification Creek
Apr 26 1877	Established
Apr 26 1877	Clements, Richard T.
Jun 28 1878	Peck, Hannibal E.
Jul 19 1880	Closed

Confirmed types of postal markings

1 WINDSOR / COL.
CI 21P 33.0/30.0/19.0

Aug 20 1878 Oct 7 1879
Hstp Fancy Star-in-circle

**YAMPA**

Published descriptions place this settlement at the junction of Fortification Creek with the Yampa River. The Post Office Department Site Location Report places it a mile east of Fortification Creek. This

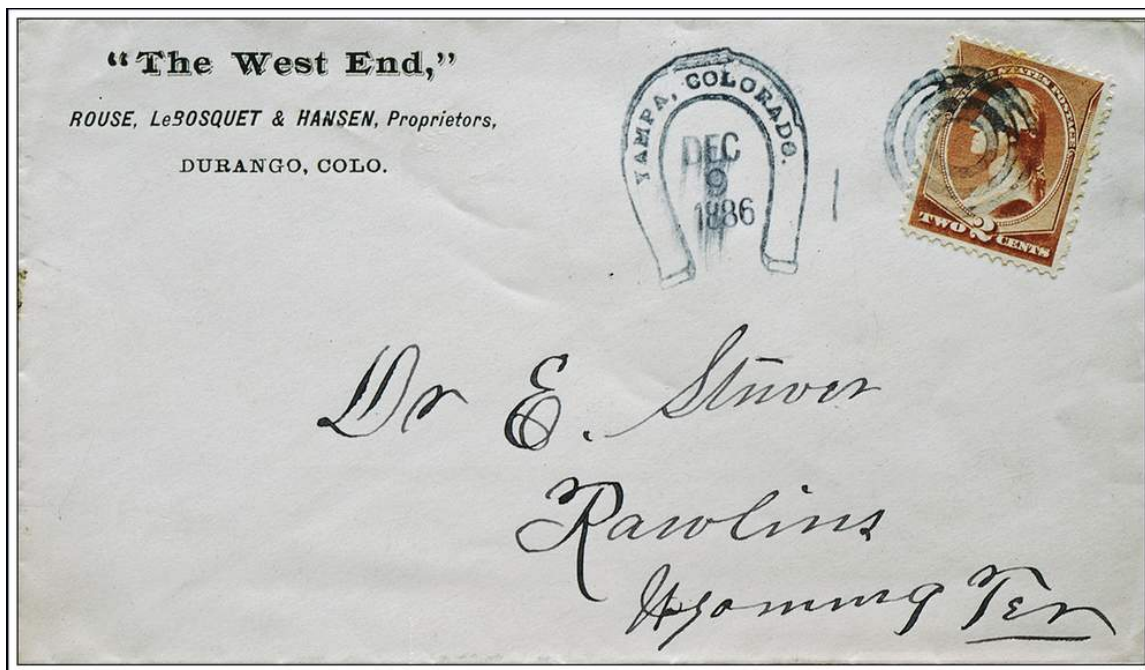
YAMPA – Continued

agrees with another report that places the post office in the house of J. H. Cheney(sic), a mile east of Fortification Creek. That spot is now between the railroad and the river and is occupied by a large sand and gravel supply business. Two and a half years after the Windsor Post Office closed, the Yampa office was established. It lasted seven years at which time the name was changed to Craig. More likely there was a move of a short distance into the new, platted village of Craig.

During its existence, Yampa served a cluster of farms and ranches in the area. Yampa is derived from the Ute Indian word for a plant (also known as squaw root) that had an edible root and resembled parsnips.

Chronology of the Post Office

- Dec 5 1882 --- SW/4 Sec 5 T6N R90W 1/2 mile north of Bear River
 One mile east of Fortification Creek
 Proposed postmaster - Joshua Heath Cheney
- Jan 12 1883 Established
- Jan 12 1883 Chesney, Joshua H.
- Apr 28 1883 --- NE/4 SE/4 NW/4 Sec 5 T6N R90W 1/4 mile north of the North Branch of the Bear River
 1-1/2 miles east of Fortification Creek
- Feb 11 1885 Laimdon, Carl D.
- Dec 11 1885 Mccashin, Oliver W.
- Aug 10 1887 Haughey, Francis M.
- Apr 27 1889 Murray, Tena
- Aug 28 1889 Name changed to Craig



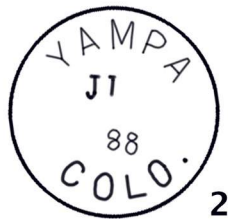
The YAMPA, COLORADO. Horseshoe postmark

December 9, 1886

Confirmed types of postal markings

- | | |
|---|--|
| <ul style="list-style-type: none"> 1 YAMPA, COLORADO.
IR 00R 25.0x31.0 2 YAMPA/ COLO.
CI 10P 27.0 | <ul style="list-style-type: none"> Apr 21 1884 Feb 7 1888 Hstp Target, 3-ring 20mm; device is a horseshoe Ju- -- 1888 A-- -3 (188-) Hstp No killer |
|---|--|

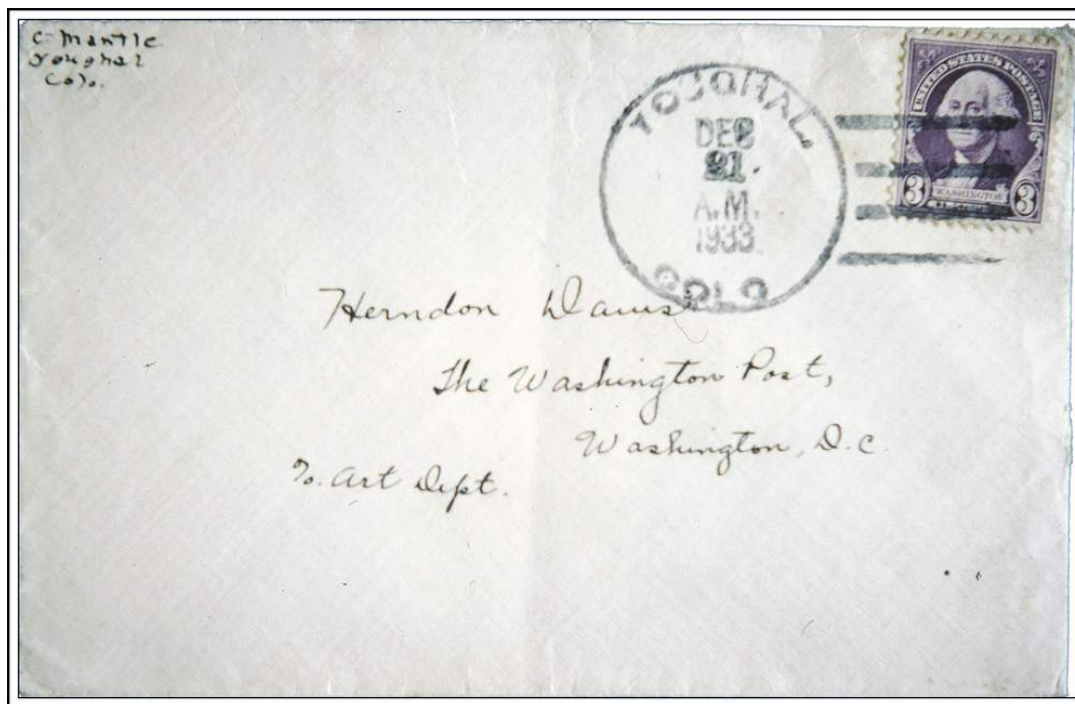
YAMPA – Continued



YOUGHAL

Younghall and Youghall are variant spelling for this post office. After a false start (see Mobley), I turned north from US 40 on Moffat County 16 (or perhaps it was Moffat 157). In any event it is fifteen wandering miles west and north to an intersection with Moffat County Road 14. Then due west on Road 14 three miles to the site of Youghal. At this point, on the north side of the road is an old log cabin. Attached to the cabin is a placard reading: “The cabin here was built in 1925 by Mike Ruppe.” This site agrees with the 1921 location. In 1931 Post Office records locate the Youghal Post Office a mile east of this cabin; however, there is nothing at that location.

The road to Youghal is passable but very lonely. I decided to take another route back to US 40. From the intersection of roads 14 and 16(?), instead of backtracking, I continued straight. From the intersection it is 17 miles to Elk Springs on a rough road through wooded tablelands and a few canyons. A pretty drive but like the earlier stretch going to Youghal, I saw no sign of habitation until I neared Elk Springs. It would not be a good place to have car trouble!



YOUGHAL, / COLO.

December 21, 1933

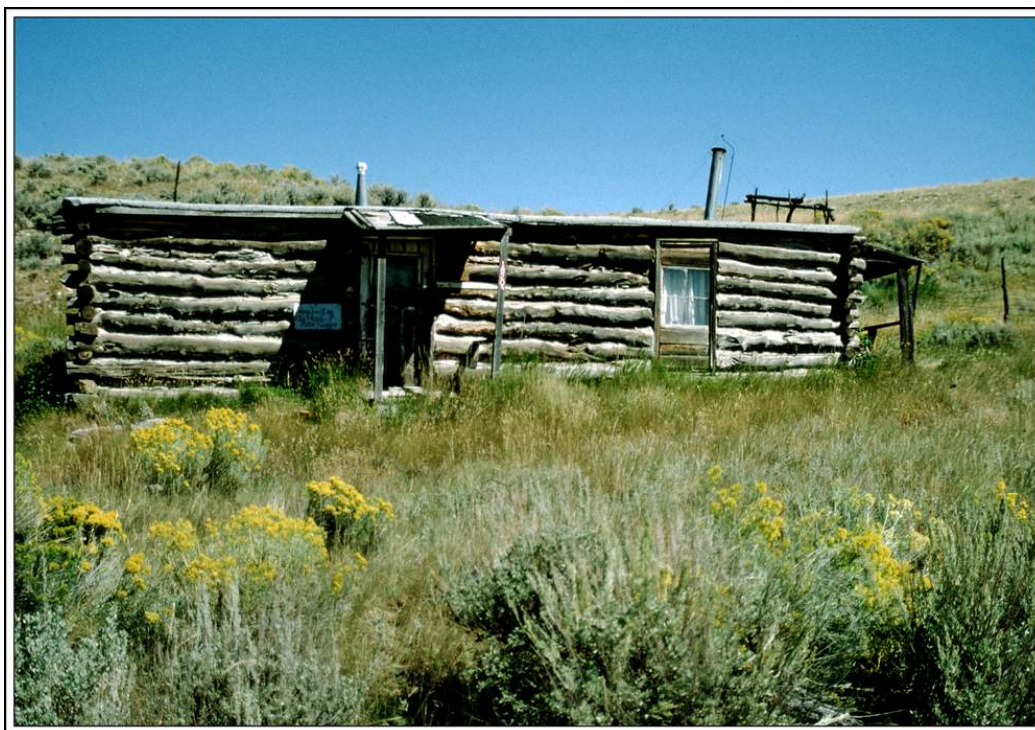
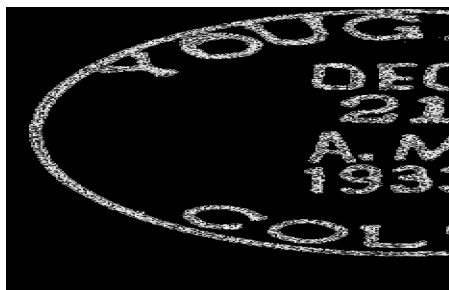
YOUGHAL – Continued

Chronology of the Post Office

Dec 12 1912	---	SE/4 NE/4 Sec 3 T5N R101W	
Mar 10 1914	---	SE/4 Sec 34 T6N R101W	Original request was for MORRIS
			Applicant for postmaster - Robert E. Morris
Jul 16 1919		Established	
Jul 16 1919		Morris, Robert E.	
May 4 1922		Faulkner, William H.	
Jun 1 1933	---	NE/4 NW/4 Sec 1 T5N R101W	Move office 1-1/2 mile northeast of previous location
			Note: "Want at my home to combine any work"
Jun 1 1933		Carver, Mrs. Jessie	Assumed charge
Jun 30 1933		Carver, Mrs. Jessie	Acting
Aug 29 1933		Carver, Mrs. Jessie	Confirmed
Nov 6 1933		Carver, Mrs. Jessie	Commissioned
Dec 18 1933		Ordered closed	
Jan 15 1934		Discontinued	Mail to Elk Springs

Confirmed types of postal markings

1 YOUGHAL, / COLO Dec 21 1933 Jan 15 1934
 CI 10P 32.0 4bars S-24x20mm



The 1925 Ruppe cabin at, or near the 1921 site of Youghal, Colorado
 Photograph by William H. Bauer September 3, 1998

BIBLIOGRAPY MOFFAT COUNTY

REFERENCES – BOOKS

- ATHEARN, Frederic J. *An Isolated Empire - A History of Northwestern Colorado*; 1982; Bureau of Land Management; Cultural Resources Series; Number Two; 134pp; illus.
- BENSON, Maxine *1001 Colorado Place Names*; 1994; University Press of Kansas; Lawrence, Kansas; 237pp; sketches
- BOYD, Leanne C. and CARSON, Glenn *Atlas of Colorado Ghost Towns, Volume II*; 1984; Carson Enterprises; Deming, New Mexico; 185pp; illus.; maps 1001
- CROFUTT, George A. *Croffutt's Gripsack Guide of Colorado*, 1885; Overland Publishing Co.; Omaha, Nebraska; Reprint: Cubar Associates; 1966; Golden, Colorado; 266pp; illus.; maps
- DAWSON, J. Frank *Place Names in Colorado*; 1954; J. Frank Dawson Publishing Co.; Denver, Colorado; 52pp
- EICHLER, George R. *Colorado Place Names*; 1977; Johnson Publishing Co.; Boulder, Colorado; 109pp; illus.
- JESSEN, Kenneth *Ghost Towns Colorado Style - Volume One - Northern Region*; 1998; J. V. Publications; Loveland, Colorado; 508pp; illus.; maps
- MURRAY, Robert B. *Colorado Ghost Town and Mining Camp Guide*; 1976; Colorado Recreation Guides, Inc.; Commerce City, Colorado; 112pp; illus.; maps
- STANKO, J., TOWLER, S., & SELIGSON, J. *The Historical Guide to Routt County*; 1979; Routt County Board of County Commissioners; Steamboat Springs, Colo.; 148 pp; illus. maps

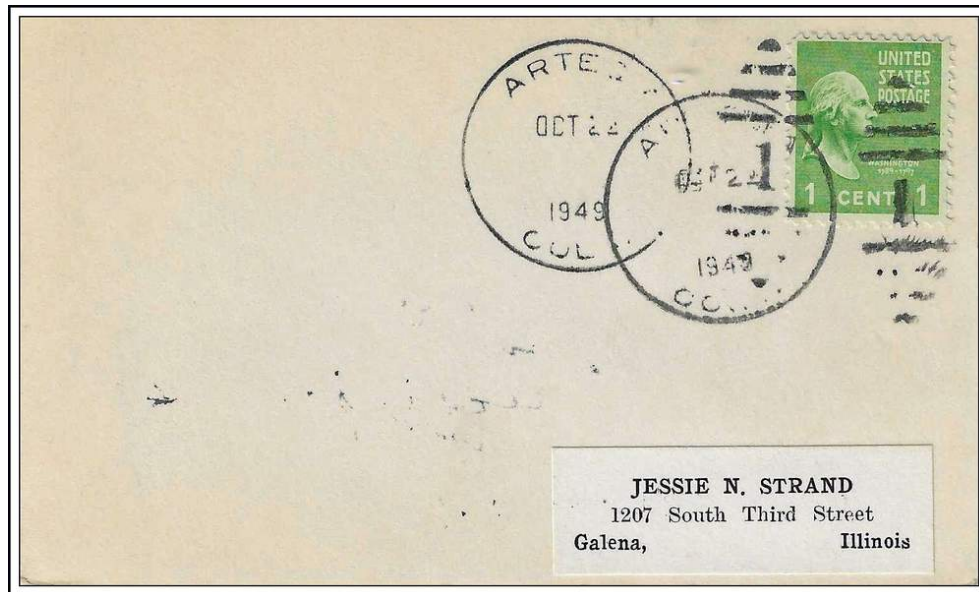
REFERENCES – COLORADO MAGAZINE

- HAFEN, LeRoy *Colorado Cities - Their Founding and the Origin of Their Names*; September 1932, Vol. 9, No. 5, pp 170-183
- PIERCE, Elladean *Early Days of Craig, Colorado*; August 1928, Vol. 5, No. 4, pp152-158
- PRITCHETT, Lulita Crawford *Tilford Stallings, Pioneer Mail Carrier to Brown's Park*; October 1957, Vol. 34, No. 4, pp268-273
- TAYLOR, David *To The Bear River Country in 1883*; April 1954, Vol. 31, No. 2, pp119-128
Place Names in Colorado [Alternate Title: *The Names of Colorado Towns*]
Prepared by the Colorado Writers Project; *Colorado Magazine*; Serialized in Volumes 17-20

GEOGRAPHIC SITE LOCATION REPORTS OF THE POST OFFICE DEPARTMENT

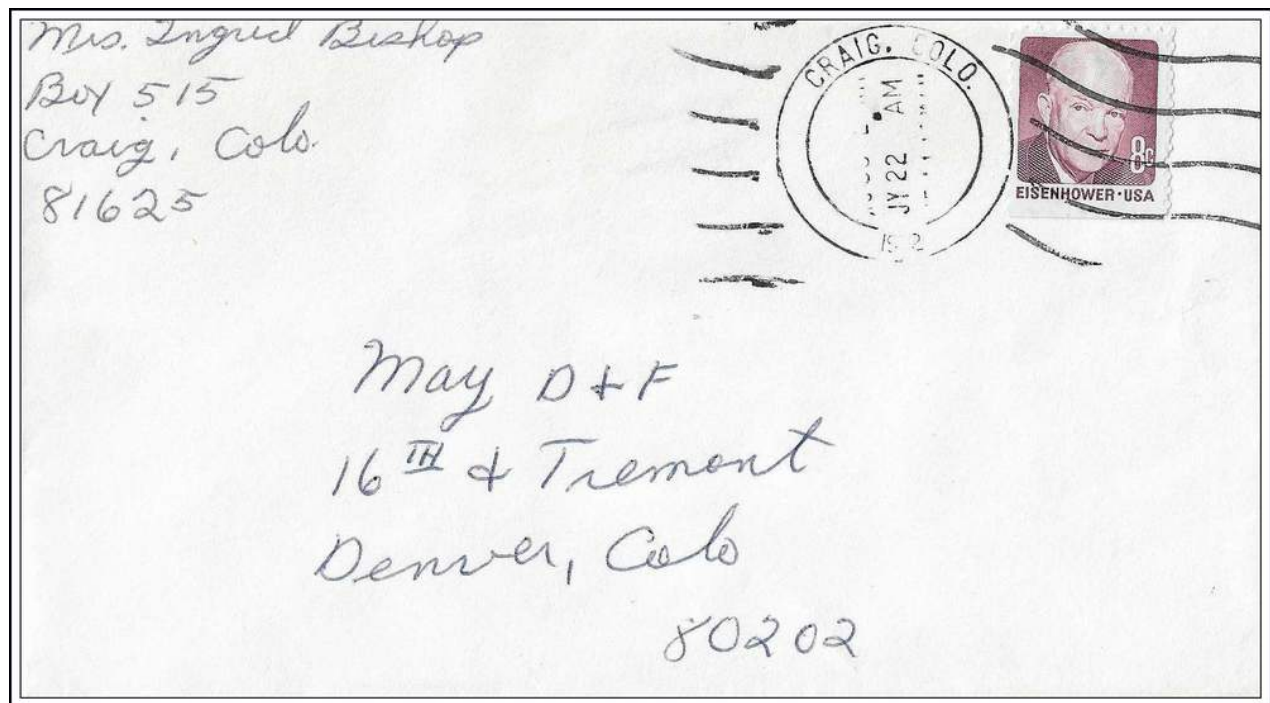
These are documents filed with applications for the approval of a new post office, at the time of a move of a post office and upon periodic requests of the Post Office Department. The documents may include a detailed location using the Federal Land Survey System, reference of distance to local streams and rivers, to railroads and to nearby existing post offices.

A GALLERY OF MOFFAT COUNTY COVERS



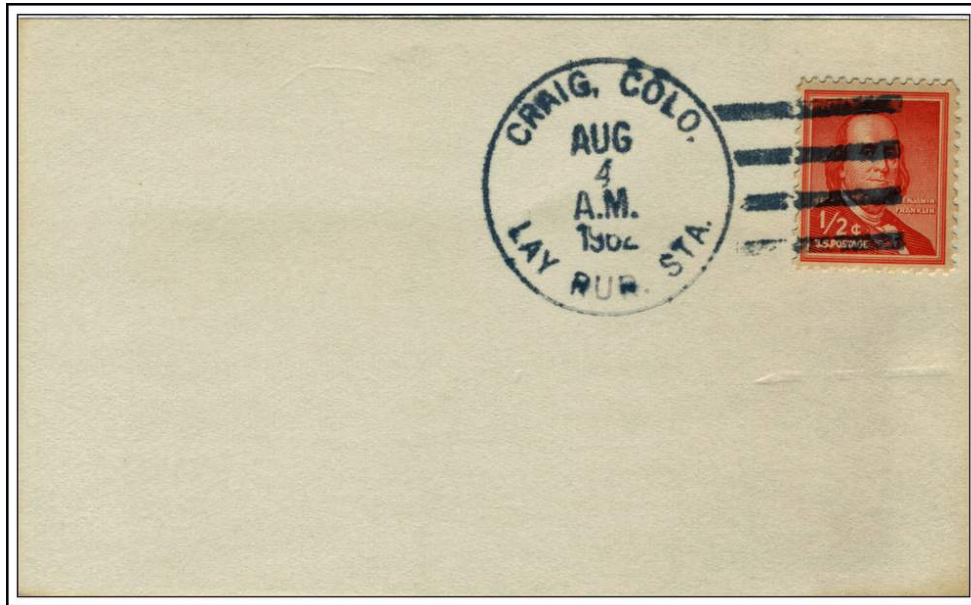
ARTESIA / COLO.

October 22, 1949

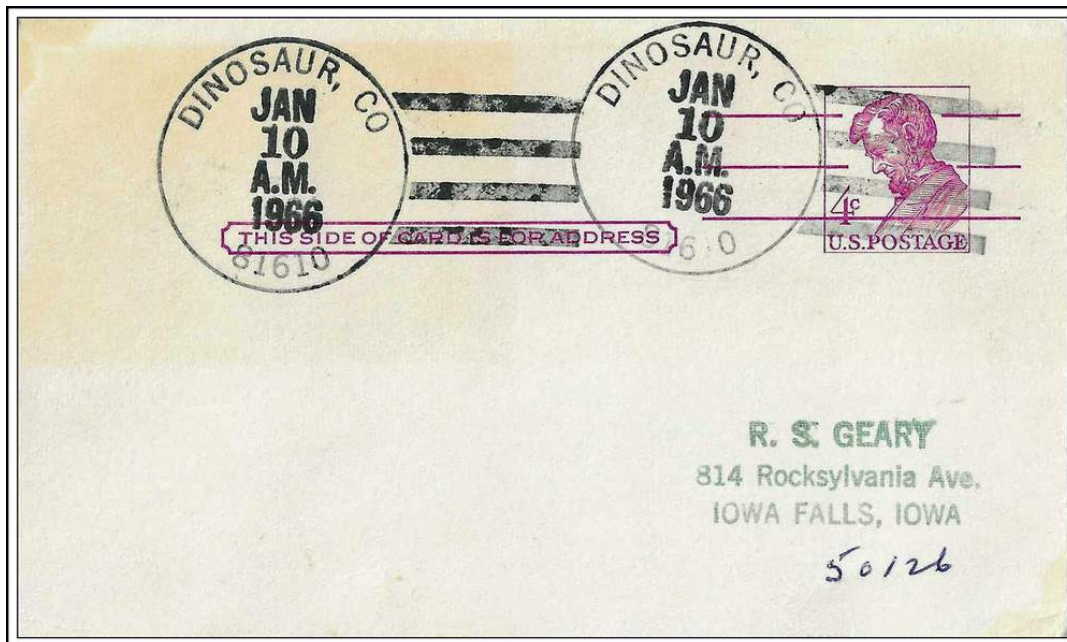


CRAIG, COLO.

July 22, 1972



CRAIG, COLO. / LAY RUR. STA. August 4, 1962



DINOSAUR, CO / 81610 January 10, 1966



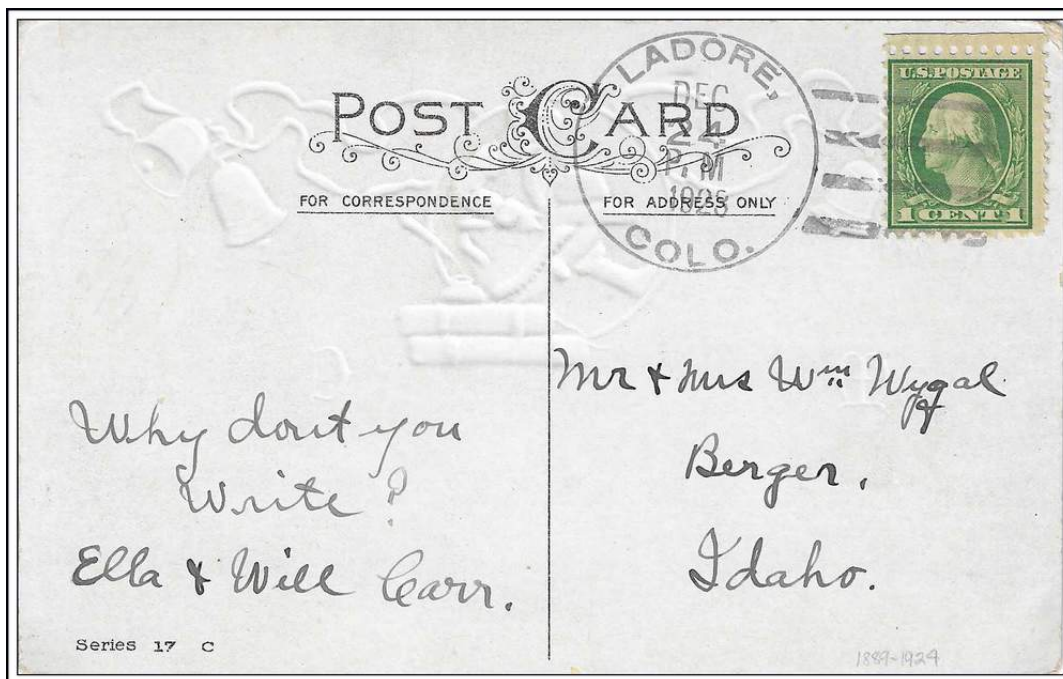
FOURMILE / COLO.

October 4, 1898



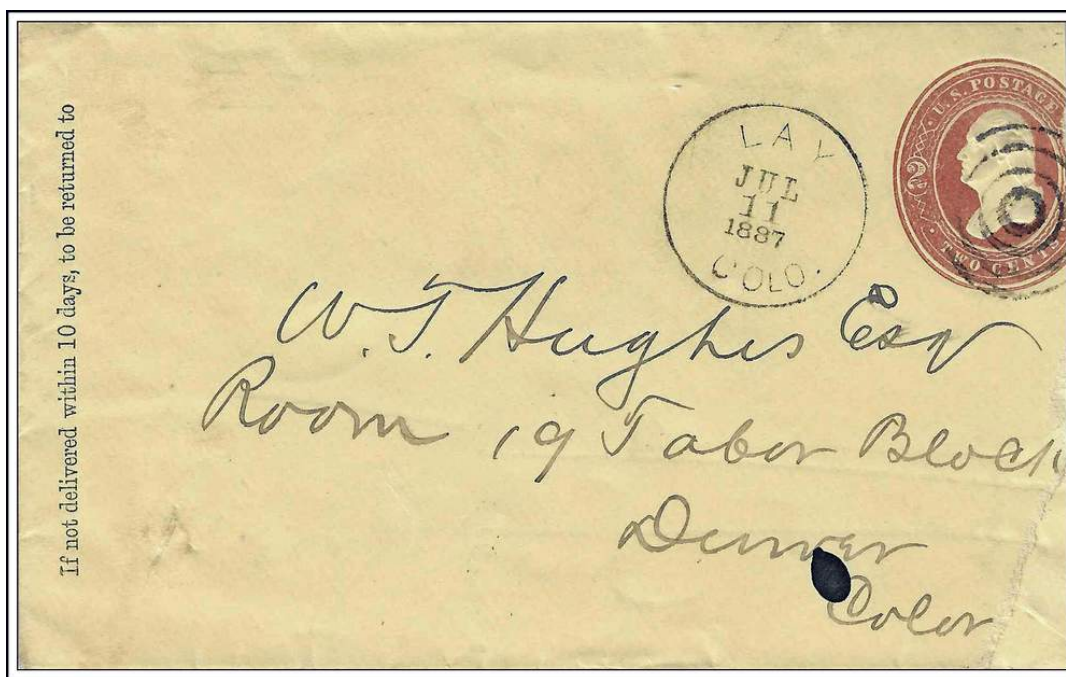
GREAT DIVIDE, / COLO.

February 17, 1940



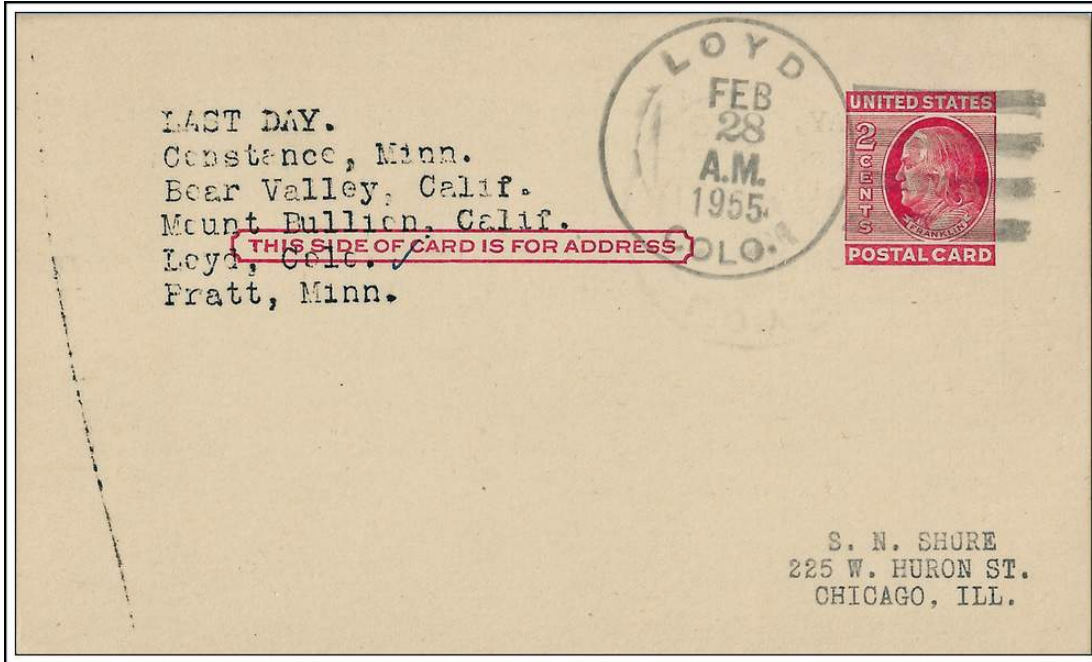
LADORE, / COLO.

December 24, 1923



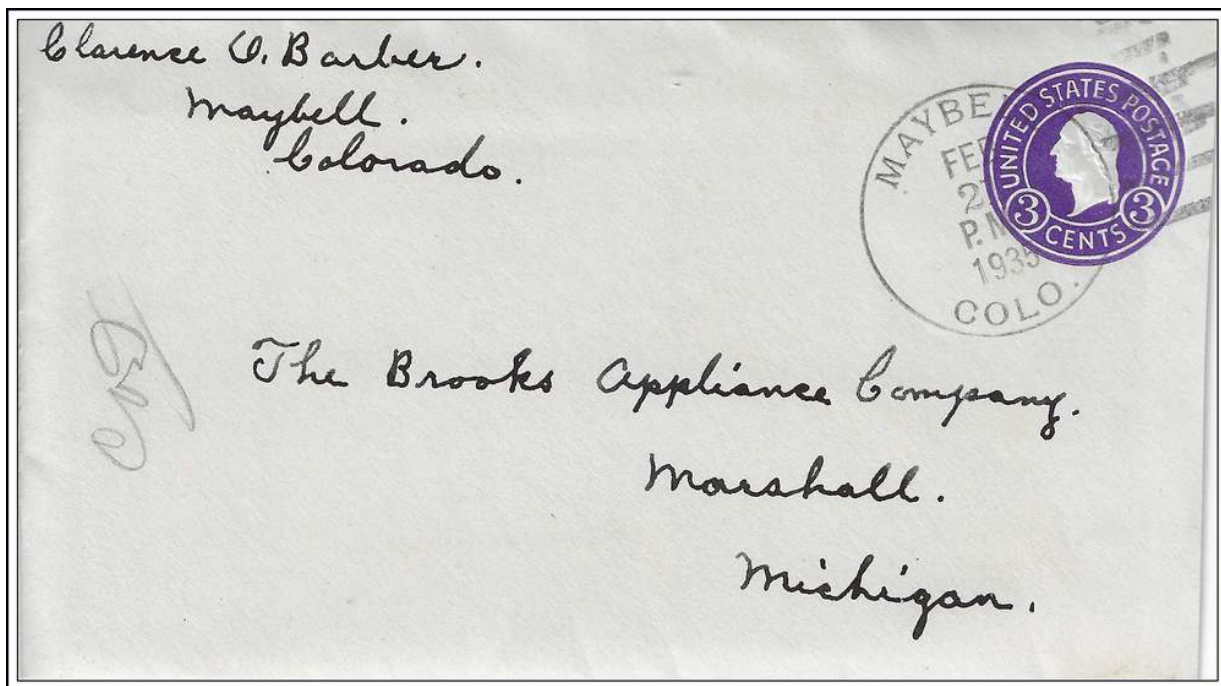
LAY / COLO.

July 11, 1887



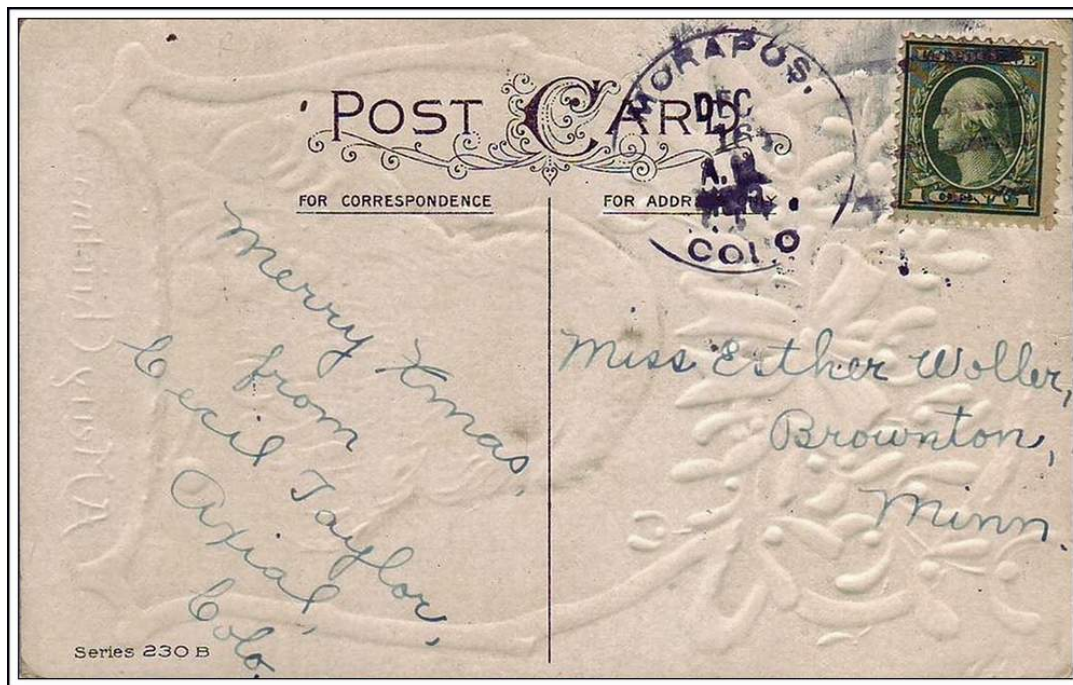
LOYD / COLO.

February 28, 1955



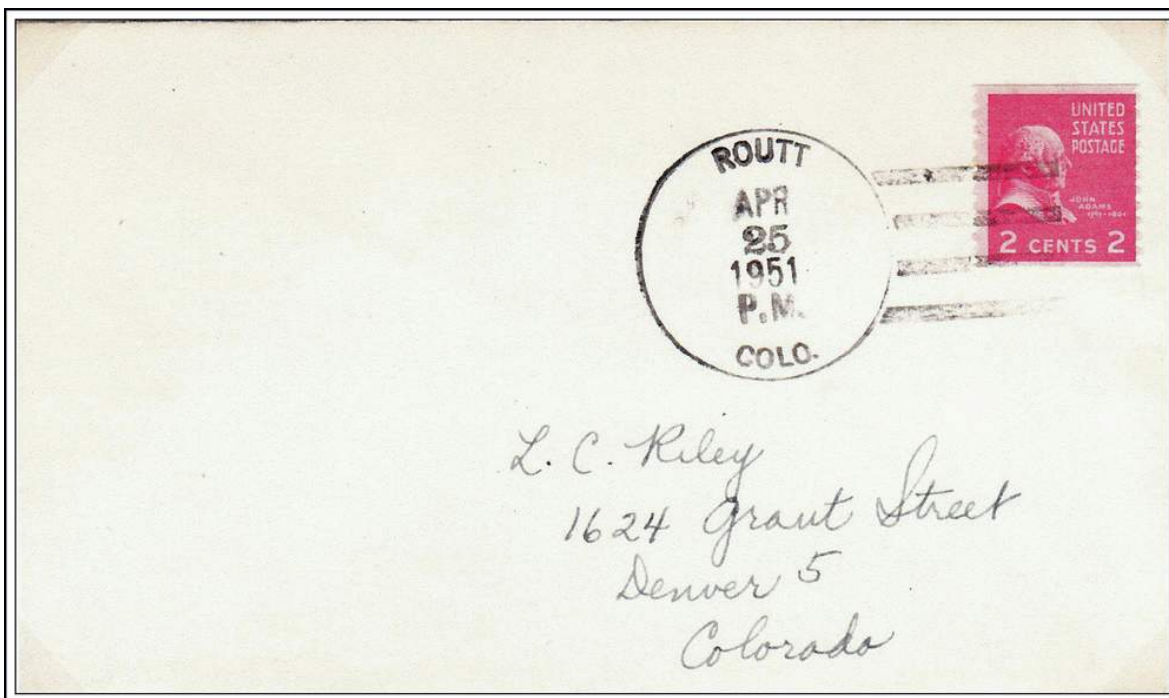
MAYBELL, / COLO.

February 21, 1935



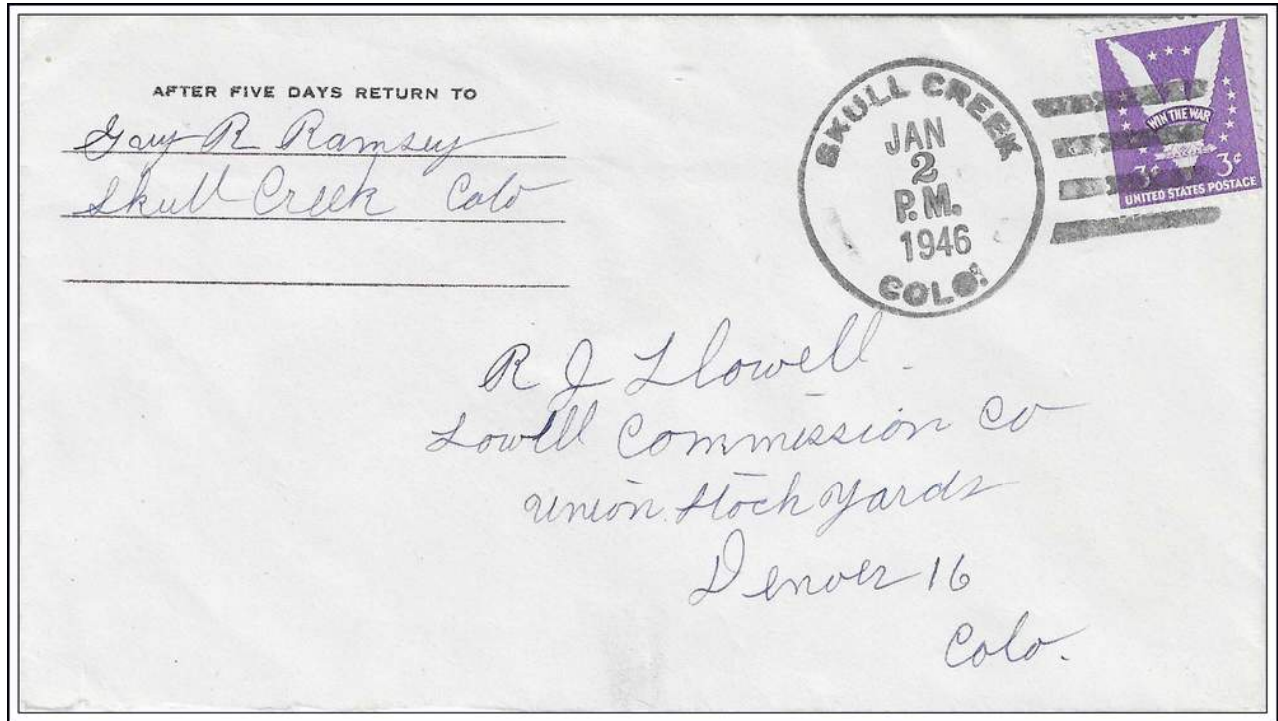
MORAPOS, / COLO.

December 16, 1913



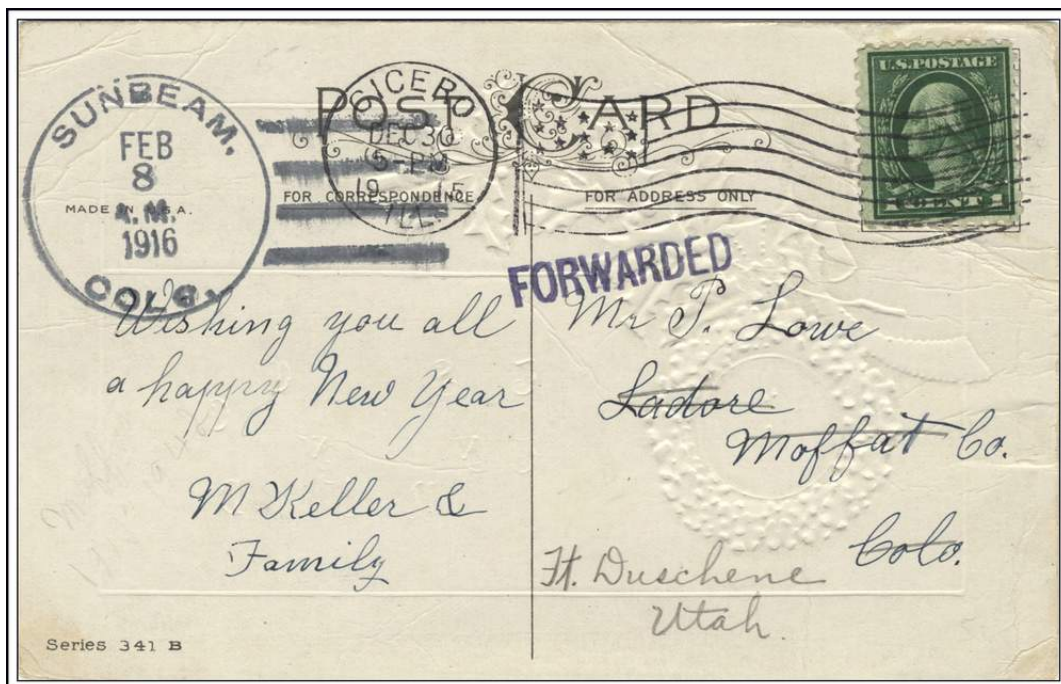
ROUTT / COLO.

April 25, 1951



SKULL CREEK / COLO.

January 2, 1946



SUNBEAM, / COLO.

February 8, 1916